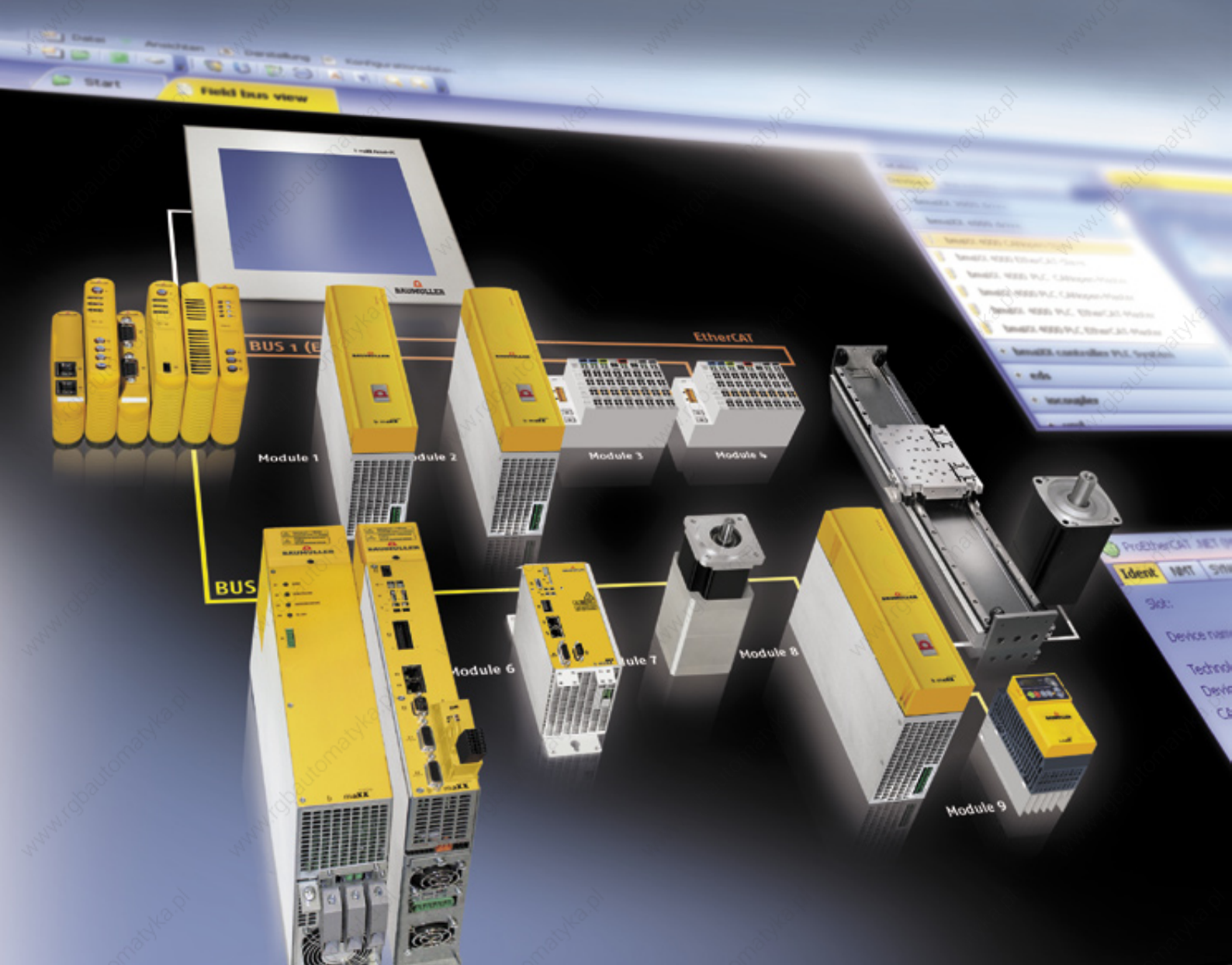


be in motion
7000 8000 9000 10000

DSD DS DA DSC DST ETA_η-Drive DSD-IPG BPx

Motors

10 20 30 40 50 60 70 80 90 100 110 120



DSD 28-100
Dynamic Motors

DSC 45-100
Compact Motors

DS 45-200
DA 100-280
General Purpose

4

6

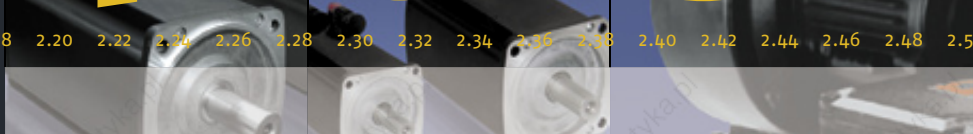
8

2.02 2.04 2.06 2.08 2.10 2.12 2.14 2.16 2.18

2.20 2.22 2.24 2.26 2.28

2.30 2.32 2.34 2.36 2.38

2.40 2.42 2.44 2.46 2.48 2.5



Our automation solutions for your machines

Our interest is always in the successful operation of the overall system, and, naturally, its optimization through our products and services. For this, we rely on Baumüller research. We develop modern solutions for automation and drive technology there. Our solutions are implemented successfully in every branch of mechanical engineering, from special machines to mass-produced ones. We design and supply complete automation systems, from control desks to the machine controller and software solutions to the electrical drive system.

Supporting our customers from commissioning of the system and over the course of the lifetime of the product is part of our company philosophy. As part of our comprehensive service spectrum, engineering, support and service play a decisive role.

Technical competency, innovation, flexibility and total customer orientation are the characteristics of our company philosophy. This is also reflected in our motto: be in motion.

Information, projects and documentation are updated on a daily basis and can be found at:

www.baumueller.com



DST2 135-400
High Torque Motors

12

ETA_n-Drive
Integrated
helical-bevel gearbox

14

DSD 45-56-IPG
Integrated planetary
gearing

16

BPx
Planetary Gearing

18

Baumüller: Your Partner
for Automation

23

0 2.52 2.54 2.56 2.58 2.60 2.62 2.64 2.66 2.68 www.baumueller.com 2.78 2.80 2.82 2.84 2.86 2.88 2.90 2.92 2.94 2.96 2.98



1 2 3 4 5

6

7 8 9 10 11 12 13 14 15 16 17 18 19

The six installation sizes for the DSD-range of Baumüller offer a suitable solution for almost every application in the automation.

DSD – Dynamic Motors

The servo motors for highly dynamic applications with the highest requirements of acceleration capacity and the best start-stop qualities, such as for:

- ⊙ Packaging machines
- ⊙ Textile machines
- ⊙ Plastics machines
- ⊙ Handling machines
- ⊙ Special machines
- ⊙ Small robots

4

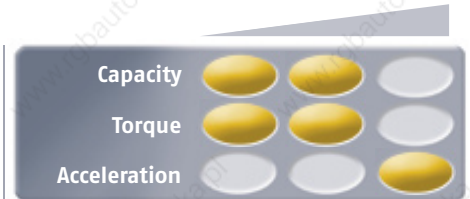
4.02 4.04 4.06 4.08 4.10 4.12 4.14 4.16 4.18 4.20 4.22 4.24 4.26 4.28 4.30 4.32 4.34 4.36 4.38 4.40 4.42 4.44 4.46 4.48 4.50

DSD 28-100 – Dynamic motors

- ⊙ Maximum dynamic response due to excellent torque/inertial mass ratio
- ⊙ Excellent smooth running characteristics
- ⊙ High overload capability
- ⊙ Smooth housing surface – not easily soiled
- ⊙ Sleek, uniform housing design
- ⊙ Almost no cogging effect
- ⊙ Permanent magnet synchronous servo motors
- ⊙ Main connection via terminal box or connector
- ⊙ IP65 degree of protection, regardless of cooling method
- ⊙ Encoders: resolver, SinCos encoder (optional)
- ⊙ All types optionally with brake



The DSD series is available in an uncooled, air-cooled and a water-cooled version.



DSD 28-100 – Technical data

		DSD 28	DSD 36	DSD2-045	DSD2-056	DSD2-071	DSD2-100
P_N	[kW]	0.3-0.6	0.4-0.9	0.73-2.4	1.3-7.2	3-19	2.8-37
n_N	[min ⁻¹]	4500-6000	4000-6000	3000-6000	2000-6000	2000-6000	1200-6000
J	[kgcm ²]	0.13-0.2	0.18-0.42	1.0-1.9	3.6-6.6	11.7-18.9	52-105
M_0	[Nm]	0.7-1.2	1.2-2.8	2.7-5.8	7-20	17-73	42-210
M_{0max}	[Nm]	2.0-3.9	2.8-8.4	12-28	25-57	53-105	105-280

		DSD 28	DSD 36	DSD2-045	DSD2-056	DSD2-071	DSD2-100
P_N	[hp]	0.4-0.8	0.5-1.2	1.0-3.2	1.7-9.7	4.0-25.5	3.8-49.6
n_N	[min ⁻¹]	4500-6000	4000-6000	3000-6000	2000-6000	2000-6000	1200-6000
J	[lb in ²]	0.04-0.07	0.06-0.14	0.34-0.65	1.2-2.2	4.0-6.5	17.8-35.9
M_0	[lbf ft]	0.5-0.9	0.9-2.1	2.0-4.3	5.2-14.8	12.5-53.8	30.9-154.9
M_{0max}	[lbf ft]	1.5-2.9	2.1-6.2	8.9-20.7	18.4-42.0	39.1-77.4	77.4-206.5

Subject to change. The values specified are maximum values.
For details, please refer to the relevant technical documentation.



18 20 22 24 26 28

30

31 32 33 34 35 36 37 38

The DSC 45-100 is a series of high-torque servo motors that are up to 30% more compact than conventional servo designs.

DSC – Compact Servo Motors

With its new DSC servo motors, Baumüller is making the torque motor servo-ready. This series focuses on improved performance by increasing torque densities. This also drastically reduces the volume of the device. In spite of the increased torque typical speed ranges of up to 4000 rpm is still provided by these motors. The new DSCs are up to 30% more compact than conventional servo motors. The DSC 45-100 series features a smooth housing surface contamination build-up. These motors are particularly easy to mount and offer a high environmental protection classification.

DSC 45-100 – Compact motors

- ⊙ Compact design with high power density
- ⊙ IP65 degree of protection, regardless of cooling method
- ⊙ Main connection and encoder connection via rotatable connectors
- ⊙ Excellent smooth running characteristics
- ⊙ Smooth housing surface – not easily soiled
- ⊙ Sleek, uniform housing design
- ⊙ Permanent magnet synchronous servo motors
- ⊙ High overload capability
- ⊙ Almost no cogging effect
- ⊙ Encoders: resolver, SinCos (optional)
- ⊙ All types optionally with brake



The DSC series is available in an uncooled, air-cooled and a water-cooled version.



DSC 45-100 – Technical data

	DSC 45	DSC 56	DSC 71	DSC 100
P_N [kW]	0.5-1.3	0.6-5.3	1.2-12	2.3-18
n_N [min^{-1}]	2000-4000	1000-4000	1000-4000	1000-3000
J [kgcm^2]	1.4-3.2	4.4-10.6	12.6-31.1	45.8-101.2
M_0 [Nm]	2.7-6.2	6.2-21	12-58	23.5-105
$M_{0\text{max}}$ [Nm]	8.5-25.5	16-48	28-84	42-126

	DSC 45	DSC 56	DSC 71	DSC 100
P_N [hp]	0.7-1.7	0.8-7.1	1.6-16.1	3.1-24.1
n_N [min^{-1}]	2000-4000	1000-4000	1000-4000	1000-3000
J [lb in^2]	0.48-1.1	1.5-3.6	4.3-10.6	15.6-34.6
M_0 [lb ft]	2.0-4.6	4.6-15.5	8.9-42.8	17.3-77.4
$M_{0\text{max}}$ [lb ft]	8.3-18.8	11.8-35.4	20.7-62.0	31.0-92.9

Subject to change. The values specified are maximum values.
For details, please refer to the technical documentation.



45

Baumüller offers an extremely wide range of synchronous and asynchronous motors with shaft heights from 45 mm to 280 mm and many different cooling methods.

DS/DA - Motors

The servo motor for all applications with strict energy efficiency requirements, for example:

- ⊙ Printing machines
- ⊙ Packaging machines
- ⊙ Textile machines
- ⊙ Plastics machines
- ⊙ Handling machines
- ⊙ Special machines
- ⊙ General mechanical engineering

DS 45-100 – General Purpose (Synchronous)

- ⊙ High torque accuracy
- ⊙ High speed
- ⊙ Compact design
- ⊙ No wear and maintenance free
- ⊙ Permanent field servo motors
- ⊙ IP64/65 non-ventilated, IP54 surface-ventilated (DS 56-100)
- ⊙ Encoders: resolver, SinCos-encoder (optional)
- ⊙ All types optionally with brake



The DS-range is also available with air-cooling option.



Capacity



Torque



Acceleration



DS 45-100 – Technical Data

		DS 45	DS 56	DS 71	DS 100
P_N	[kW]	0.25-1.26	0.38-5.80	1.5-11.80	1.5-23.56
n_N	[min ⁻¹]	3000-6000	2000-6000	2000-6000	1200-6000
J	[kgcm ²]	1.5-3.4	3.0-15.7	14.6-50.2	36.5-175
M_0	[Nm]	0.8-3.2	1.9-13.2	7.0-31.0	12.5-84.0
M_{0max}	[Nm]	3.4-15	5.6-30	23-72	35-159

		DS 45	DS 56	DS 71	DS 100
P_N	[hp]	0.34-1.7	0.51-7.8	2.0-15.8	2.0-31.6
n_N	[min ⁻¹]	3000-6000	2000-6000	2000-6000	1200-4000
J	[lb in ²]	0.51-1.16	1.03-5.36	5.0-17.15	12.47-59.80
M_0	[lbf ft]	0.6-2.4	1.4-9.7	5.2-22.9	9.2-62.0
M_{0max}	[lbf ft]	2.5-11	4.1-22.1	17.0-53.1	25.8-117.2

Subject to alterations. The stated data are maximum values.
For details please have a look in the technical documentations.

DS 100-200 – General Purpose (Synchronous)

- ⊙ Excellent smooth running characteristics
- ⊙ High torque accuracy
- ⊙ Extremely flexible due to modular design
- ⊙ Compact and robust design
- ⊙ High level of efficiency
- ⊙ Permanent field servo motors
- ⊙ Unventilated IP54, ventilated IP23, IP54
- ⊙ Water-cooled IP54
- ⊙ Encoders: resolver, SinCos-encoder (optional)
- ⊙ All types optionally with brake



DS motors are available as air- and water-cooled model.



DS 100-200 – Technical Data

		DS 100	DS 132	DS 160	DS 200
P_N	[kW]	3.5-42	10-92	30-150	57-290
n_N	[min ⁻¹]	1000-3000	1000-3000	1000-3000	500-2700
J	[kgm ²]	0.010-0.022	0.045-0.084	0.15-0.25	0.44-0.79
M_0	[Nm]	21-145	42-358	350-659	619-1300
M_{0max}	[Nm]	110-320	275-680	685-1180	1100-2120

		DS 100	DS 132	DS 160	DS 200
P_N	[hp]	4.7-56	13-123	40-201	77-389
n_N	[min ⁻¹]	1000-3000	1000-3000	1000-3000	500-2700
J	[lb ft ²]	0.24-0.52	1.1-2.0	3.6-6.0	10.5-18.8
M_0	[lbf ft]	16-107	31-264	258-486	457-959
M_{0max}	[lbf ft]	81-236	203-502	505-870	811-1564

Subject to alterations. The stated data are maximum values.
For details please have a look in the technical documentations.

DA 100-280 – General Purpose (Asynchronous)

- ⊙ Excellent smooth running characteristics
- ⊙ Model as asynchronous cage rotor
- ⊙ Extremely flexible due to modular design
- ⊙ Large field weakening range
- ⊙ High level of efficiency
- ⊙ Compact and robust design
- ⊙ High torque accuracy
- ⊙ Unventilated IP54, ventilated IP23, IP54
- ⊙ Water-cooled IP54
- ⊙ Encoders: resolver 2-pole, SinCos-encoder (optional)
- ⊙ All types optionally with brake



The DA main drives are available as air- and water-cooled model.

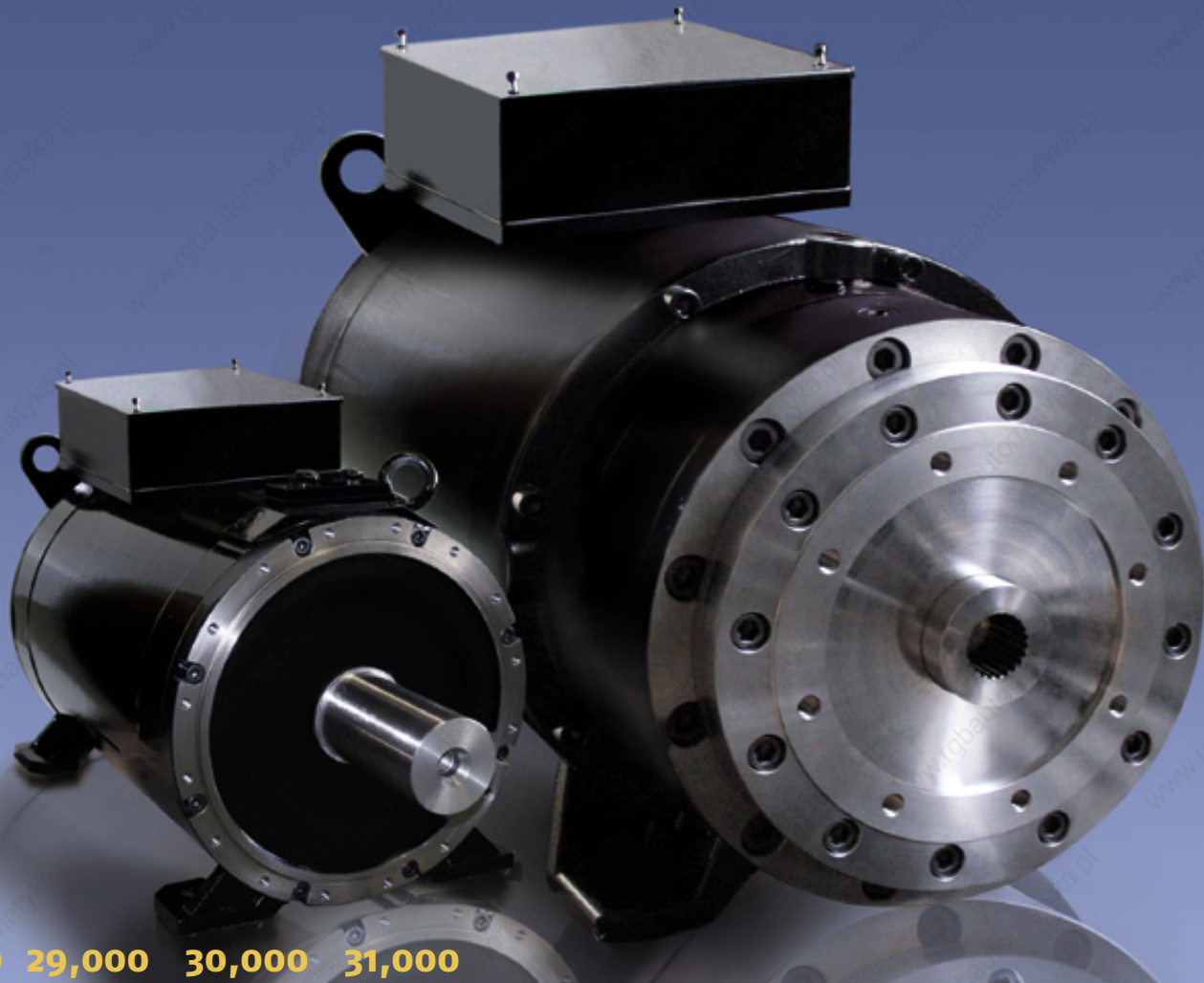


DA 100-280 – Technical Data

		DA 100	DA 132	DA 160	DA 180	DA 225	DA 280
P_N	[kW]	3.5-25	10-50	10-120	16-200	27-265	82-400
n_N	[min ⁻¹]	1000-3000	1000-3000	400-3000	400-3000	400-3000	750-2600
J	[kgm ²]	0.017-0.034	0.074-0.120	0.245-0.346	0.515-0.676	1.313-2.063	3.3-5.10
M_0	[Nm]	25-86	73-215	175-573	277-955	388-1862	937-3262
M_{0max}	[Nm]	66-138	192-350	464-917	764-1528	1290-2979	2100-5200

		DA 100	DA 132	DA 160	DA 180	DA 225	DA 280
P_N	[hp]	4.7-34	13-67	13-161	21-268	36-355	110-536
n_N	[min ⁻¹]	1000-3000	1000-3000	400-3000	400-3000	400-3000	750-2600
J	[lb ft ²]	0.40-0.81	1.76-2.84	5.81-8.20	12.2-16.0	31.2-48.9	78.3-121
M_0	[lbf ft]	18-64	54-159	129-423	204-704	286-1373	691-2406
M_{0max}	[lbf ft]	49-102	142-258	342-676	564-1127	952-2197	1549-3835

Subject to alterations. The stated data are maximum values.
For details please have a look in the technical documentations.



28,000 29,000 30,000 31,000

32,000

32,100 32,200 32,300 32,400 32,500

Baumüller offers the DST-range up to 32,000 Nm torque and herewith provides the maximum dynamic in the direct drive technology.

DST – High Torque Motors

The high-torque synchronous motors for application with maximum torque requirements, such as for:

- ⊙ Plastics machines
- ⊙ Rotary tables or swivel axis
- ⊙ Printing machines
- ⊙ Press technology
- ⊙ Winders
- ⊙ Wire-drawing machines
- ⊙ Stretching units
- ⊙ Machine tools
- ⊙ Woodworking machines
- ⊙ Special machines

DST2-135-400 – The powerful high-torque motors

- ⊙ Very good smooth running characteristics
- ⊙ Energy-efficiency is maintained through wide speed/load range
- ⊙ Suitable for sophisticated direct drive technology
- ⊙ High torque at low velocities
- ⊙ Low-noise
- ⊙ Water cooling in a stainless steel design
- ⊙ Compact and robust design
- ⊙ Smooth housing surface – easy to keep clean
- ⊙ Permanent field high-torque motors
- ⊙ IP54 type of protection
- ⊙ Encoder: Resolver, SinCos encoder (option)
- ⊙ Thrust bearing (optional)



DST high-torque motors are available in water-cooled versions.



DST2-135-400 – Technical data

	DST2-135	DST2-200	DST2-260	DST2-315	DST2-400
P_N [kW]	2.7-60	5.5-126	20-225	16-280	94-320
n_N [min^{-1}]	175 - 1500	150 - 1000	150 - 600	100 - 500	100 - 300
M_N [Nm]	140 - 580	310 - 2030	1160 - 4760	1200 - 8600	9000 - 19300
$M_{0\text{max}}$ [Nm]	325 - 1110	790 - 4450	2410 - 9800	3330 - 18400	15400 - 32900

	DST2-135	DST2-200	DST2-260	DST2-315	DST2-400
P_N [hp]	3.6-80	7.4-169	27-302	21-375	126-429
n_N [min^{-1}]	175 - 1500	150 - 1000	150 - 600	100 - 500	100 - 300
M_N [lbf ft]	103 - 427	229 - 1497	856 - 3513	885 - 6343	6642 - 14243
$M_{0\text{max}}$ [lbf ft]	240 - 819	620 - 3496	1779 - 7232	2456 - 13571	11365 - 24280

Subject to alterations. The stated data are maximum values.
For details please have a look in the technical documentations.



1 2 3 4

4

5 6 7

Minimum installed volume and high system efficiency characterise this geared motor which has been specifically developed for the food and drinks industry. With four different gear ratios and three motor variants, Baumüller offers a broad range for drive systems.

ETA_η-Drive – Your drive for aseptic applications

The drive system is based on a standard servomotor from the Baumüller DSC range, from which a motor-gearbox combination has been derived. At the same time the motor has been optimized electrically and mechanically: The integrated connection technology permits a compact system design and a special bearing concept the integration of the two-stage bevel helical gearbox. In combination with the integrated synchronous motor, this exhibits efficiency levels of up to 90 percent. The geared motor was designed as a shaft-mounted unit and as a result of its surface finish is also suitable for aseptic applications, for example in the food, drinks and pharmaceuticals industries.

ETA_η-Drive – Synchronous geared motors

- ⊙ Intergrated connection technology
- ⊙ Efficiency-optimised gearbox
- ⊙ Compact construction with high power density
- ⊙ Permanent magnet excited synchronous motors
- ⊙ Encoderless operation (depends on converter)
- ⊙ Smooth, easy to clean surfaces
- ⊙ Fully enclosed design
- ⊙ Optional hollow stainless steel output shaft
- ⊙ Optional encoder
- ⊙ Brake on request
- ⊙ Completely maintenance-free
- ⊙ Protection class IP66



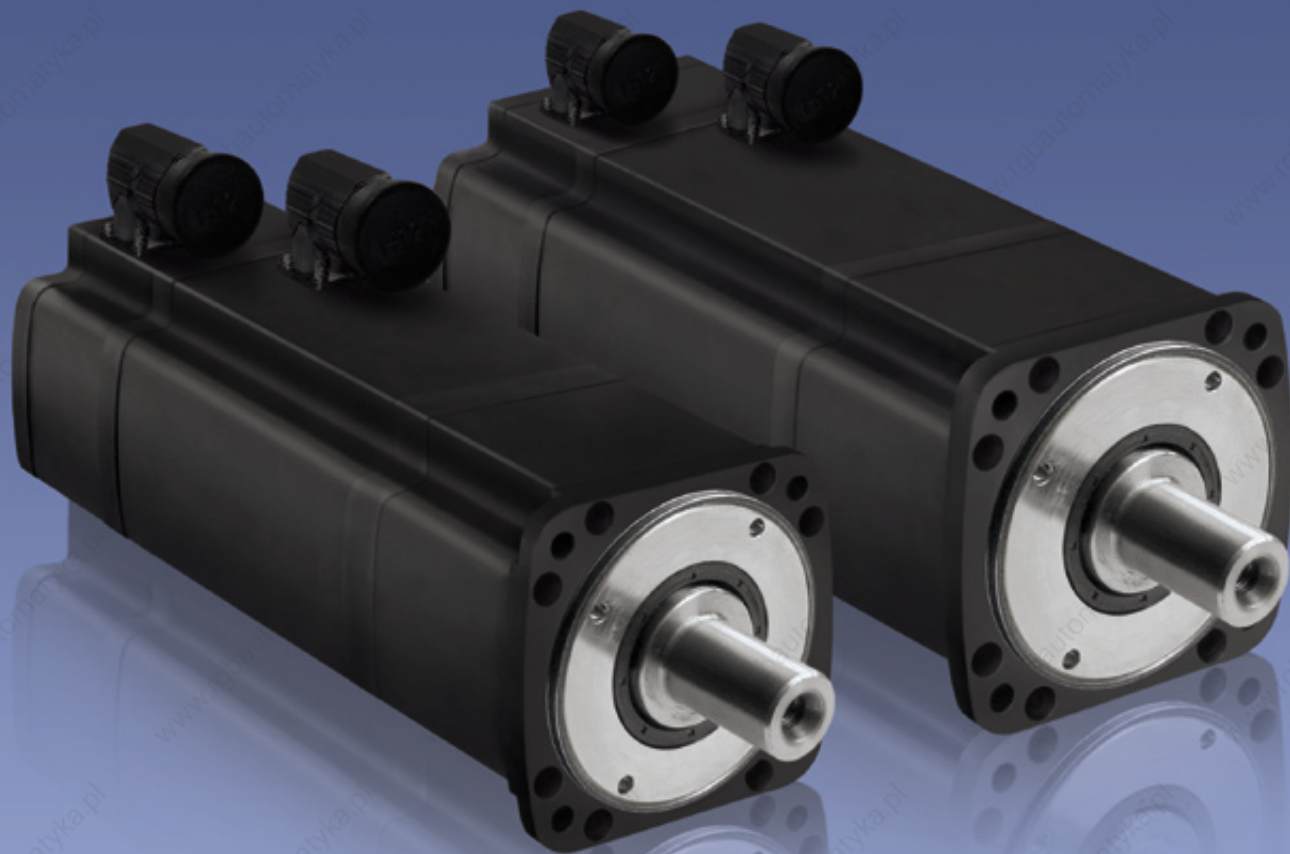
An uncooled version of the ETA_η-Drive is available.



ETA_η-Drive – Technical Data

	DSC 056... 10				DSC 056... 20				DSC 056... 30			
	1000				2000				3000			
n₁ [rpm]												
Transmission ratio	6	11	20	37	6	11	20	37	6	11	20	37
n₂ [rpm]	164	90	49	27	329	180	99	54	493	270	148	81
P_N [kW]	0.6 – 1.5				1.2 – 2.5				1.6 – 2.9			
M₂ [Nm]	36 – 400				34 – 400				32 – 337			

Subject to alterations. The stated data are maximum values.
For details please have a look in the technical documentations.



1 2 3 4 5 6 7

8

5 6 7 8 9 10 11 12 13 14 15 16 17 18 19

The geared motor from Baumüller, the DSD-IPG, is distinguished by its high torque and excellent dynamic response qualities. Offering transmission ratios of $i=4$ and $i=8$, the DSD-IPG is a compact and dynamic motor that meets the highest torque requirements.

DSD-IPG – Three-Phase Synchronous Gear Motors

Thanks to the integrated planetary gearing, the DSD-IPG, available in frame sizes 45 and 56, is ideal for high-torque applications that require a high dynamic response.

The DSD has an overload capacity that is up to 40% greater than in comparable servo motors of the DS series. With these qualities, the DSD-IPG is the perfect candidate for handling, robotics and packaging applications.

In spite of the transmission ratios of $i=4$ and $i=8$, the motor fully retains its dynamic characteristics. The extremely compact DSD-IPG paves the way for optimal space utilization. Several axes can, for example, be placed side by side in a space-saving manner. Depending on the application, Sincos encoders or brakes can be combined with the gearing.

DSD 45-56-IPG – Gear Motors

The concept offers:

- ⊙ High output torque
- ⊙ High dynamic response
- ⊙ Low moment of inertia
- ⊙ Compact frame size
- ⊙ Sleek, uniform housing
- ⊙ Smooth housing surface – not easily soiled
- ⊙ Optimized transmission stepping
- ⊙ High protection type IP65
- ⊙ Encoder system standard resolver (other encoder type on request)
- ⊙ All types optionally with brake

Features of the integrated planetary gearing include:

- ⊙ Low circumferential backlash (<math><3'</math>)
- ⊙ High stability
- ⊙ High efficiency (98%)
- ⊙ Transmission ratios $i=4$ und $i=8$
- ⊙ Low noise level (<math><65\text{ dBA}</math>)
- ⊙ Any required mounting position
- ⊙ Lifetime lubrication



The DSD-IPG is available as air-cooled model.



Capacity

Torque

Acceleration

DSD 45-56-IPG – Technical Data Motor/Gear

		DSD 45-IPG4	DSD 45-IPG8	DSD 56-IPG4	DSD 56-IPG8
n_N	[min^{-1}]	1125	562	500	250
M_0	[Nm]	20.4	40.8	45.1	90.2
$M_{0\text{max}}$	[Nm]	98	108	204	245

		DSD 45-IPG4	DSD 45-IPG8	DSD 56-IPG4	DSD 56-IPG8
n_N	[min^{-1}]	1125	562	500	250
M_0	[lbf ft]	15.05	30.1	33.25	66.5
$M_{0\text{max}}$	[lbf ft]	72.3	79.7	150.3	180.7

Subject to alterations. The stated data are maximum values.
For details please have a look in the technical documentations.



1 2

2

10 20 30 40 50 60 70 80 90 100 110 120

3 4 5 6 7 8 9 10 11 12 13 14

Baumüller's two series of planetary gearing offer precision and economy for compact, cost-effective drive solutions at the highest technical level.

BPx – Baumüller Planetary Gearing Range

In connection with our standard DS/DSD/DSC servo drives, the BPx planetary gear range is optimally suitable for applications that require maximum standards of torque and dynamics. In combination with a high number of transmission ratio gradings, almost any possible combination of motor and gear allow an optimal adaptation of customized application.

Two versions with different configuration options are available

- ◎ The BPN series is the gearbox solution for high-technology applications and reflects a perfect combination of innovation, efficiency, and cost effectiveness.
- ◎ The BPE series is used in applications where extremely low torsional backlash is not required.

BPN Precision series

BPN is a precision gearbox for connection to standard flanged ends and shaft ends of the Baumüller DS, DSD, and DSC motor series. The gearbox series is available in standard, angle or flange versions.

BP	X	FS	type code BPN:	
			FS	Frame Size
	X		N	= Precision
			NA	= Precision Angle
			NF	= Precision Flange
BP			Baumüller Planetary	



BPN



BPNA



BPNF

130 140



BPN – Technical Data



		BPN 36	BPN 45	BPN 56	BPN 71	BPN 100
M_{N2}	[Nm]	77	150	300	1000	1800
$n_{input\ max}$	[min ⁻¹]	14000	10000	8500	6500	6000
i		3 - 100	3 - 100	3 - 100	3 - 100	3 - 100

		BPN 36	BPN 45	BPN 56	BPN 71	BPN 100
M_{N2}	[lbf ft]	57	111	221	738	1328
$n_{input\ max}$	[min ⁻¹]	14000	10000	8500	6500	6000
i		3 - 100	3 - 100	3 - 100	3 - 100	3 - 100

Subject to alterations. The stated data are maximum values.
For details please have a look in the technical documentations.

BPNA – Technical Data



		BPNA 36	BPNA 45	BPNA 56	BPNA 71
M_{N2}	[Nm]	77	150	300	800
$n_{input\ max}$	[min ⁻¹]	16000	16000	14000	9500
i		4 – 100	4 – 100	4 – 100	16 – 100

		BPNA 36	BPNA 45	BPNA 56	BPNA 71
M_{N2}	[lbf ft]	57	111	221	590
$n_{input\ max}$	[min ⁻¹]	16000	16000	14000	9500
i		4 – 100	4 – 100	4 – 100	16 – 100



BPNF – Technical Data



		BPNF 36	BPNF 45	BPNF 56	BPNF 71
M_{N2}	[Nm]	77	150	300	1000
$n_{input\ max}$	[min ⁻¹]	14000	10000	8500	6500
i		4 – 100	4 – 100	4 – 100	4 – 100

		BPNF 36	BPNF 45	BPNF 56	BPNF 71
M_{N2}	[lbf ft]	57	111	221	738
$n_{input\ max}$	[min ⁻¹]	14000	10000	8500	6500
i		4 – 100	4 – 100	4 – 100	4 – 100

Subject to alterations. The stated data are maximum values.
For details please have a look in the technical documentations.

BPE Economy series

The Economy version (standard, angled, or flanged) is available for simple applications with less stringent torque and speed requirements.

BP	X	FS	type code BPE:	
			FS	Frame Size
	X		E	= Economy
			EA	= Economy Angle
			EF	= Economy Flange
BP			Baumüller Planetary	



BPE



BPEA



BPEF



BPE – Technical Data



	BPE 20	BPE 30	BPE 30/35	BPE 40	BPE 40/45	BPE 60	BPE 60/56	BPE 80
M_{N2} [Nm]	20	44	44	130	130	260	260	800
$n_{input\ max}$ [min^{-1}]	18000	13000	13000	7000	7000	6500	6500	6500
i	3 - 512	3 - 512	3 - 512	3 - 512	3 - 512	3 - 512	3 - 512	3 - 64

	BPE 20	BPE 30	BPE 30/35	BPE 40	BPE 40/45	BPE 60	BPE 60/56	BPE 80
M_{N2} [lbf ft]	14.8	32.5	32.5	95.9	95.9	192	192	590
$n_{input\ max}$ [min^{-1}]	18000	13000	13000	7000	7000	6500	6500	6500
i	3 - 512	3 - 512	3 - 512	3 - 512	3 - 512	3 - 512	3 - 512	3 - 64

Subject to alterations. The stated data are maximum values.
For details please have a look in the technical documentations.

BPEA – Technical Data



		BPEA 20	BPEA 30	BPEA 40	BPEA 40/45	BPEA 60/56	BPEA 60
M_{N2}	[Nm]	20	44	130	130	260	260
$n_{input\ max}$	[min ⁻¹]	18000	13000	7000	7000	6500	6500
i		3 - 512	3 - 512	3 - 512	3 - 512	3 - 512	3 - 512

		BPEA 20	BPEA 30	BPEA 40	BPEA 40/45	BPEA 60/56	BPEA 60
M_{N2}	[lbf ft]	14.8	32.5	95.9	95.9	192	192
$n_{input\ max}$	[min ⁻¹]	18000	13000	7000	7000	6500	6500
i		3 - 512	3 - 512	3 - 512	3 - 512	3 - 512	3 - 512



BPEF – Technical Data



		BPEF 35	BPEF 45	BPEF 56
M_{N2}	[Nm]	44	130	260
$n_{input\ max}$	[min ⁻¹]	13000	7000	6500
i		3 - 64	3 - 64	3 - 64

		BPEF 35	BPEF 45	BPEF 56
M_{N2}	[lbf ft]	32,5	95,9	192
$n_{input\ max}$	[min ⁻¹]	13000	7000	6500
i		3 - 64	3 - 64	3 - 64

Subject to alterations. The stated data are maximum values.
For details please have a look in the technical documentations.

Automation solutions
Planning & development
Project management
Hardware & software engineering
Control cabinet design
Sheet metal solutions
Components
Electrical installation
Commissioning
Expansion of existing systems
Technical support worldwide
Assembly
Training
Service
Maintenance
Repair
Retrofit

362 363 364

349 350 351 352 353 354 355 356 357 358 359 360 361 362 363 364 365

365

18 19 20 21 22 23 24

1 2 3 4 5 6 7

You can contact us on our Service Hotline +49 (0)911 5432-133 twenty-four hours a day on 365 days of the year.

Automation solutions by Baumüller

Cooperation with development partners, who contribute to the entire solution in a system-oriented way, is a precondition if you want to concentrate on your own competencies in the field of machine building. If your automation partner supports you during the realization of your system concept, you receive the development, project management and the optimal adaptation of a drive solution from one source.

From the plastics to the packaging industry, from the textile to the printing industry, Baumüller is an innovative system partner of the capital goods industry. We provide solutions for automation, electrical and drive engineering throughout the entire life cycle of a plant.

It goes without saying that in addition to our complete package consisting of engineering, installation, commissioning and services, we offer customer service with perfect coverage – namely anywhere in the world and at any time.

We are the partner for your success.

Planning & development

Baumüller is an innovative development partner of machine builders. Already in the early product development stages, we concept and develop an economical and technologically future-proof plant together with you.

Project management

Our project leaders ensure the implementation of turnkey equipment.

Hardware & software engineering

From the dimensioning via cabling to air conditioning of your control cabinets, we design your hardware taking account of all design and manufacturing options that are technologically innovative, user-oriented and as economical as possible.

Control cabinet design & sheet metal solutions

From sheet pieces to completely wired control cabinets, Baumüller has realized individual solutions for well-known machine and plant builders as well as for medical and electro engineering for years.

In order to meet the needs and requirements of the capital goods industry of demand-oriented products, as a competent system partner we offer everything from one source. From planning to construction, over sheet metal production and series wiring up to assembly and installation on site – worldwide.

Our control cabinet design is certified according to UL 508a.



Electrical installation & Commissioning

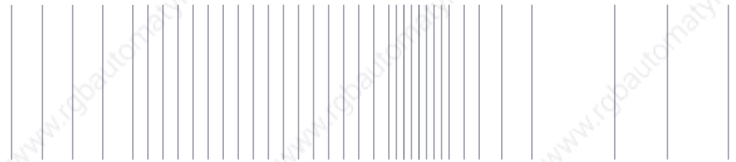
You construct the mechanics of your system, we design and install the electronics. Whether inhouse or worldwide at your customer's site – with our software solutions and drive technologies we set your machine ideas in motion. For the worldwide installation and commissioning of your systems, we always take account of the respective country-specific standards.

Expansion of existing systems

Innovative and customer-specific products require state-of-the-art production methods and machine functions. Using an adaptation or expansion of your existing machine architecture, you quickly achieve an increased flexibility and availability of your systems – while allowing you to estimate your expenses and manage your investments.

Technical support worldwide

Whether it is remote diagnosis and remote maintenance using telecommunication or the Internet, through our 24-hour hotline or our contact partners at branch offices onsite in more than 40 locations worldwide – the experts from Baumüller provide full explanations to all your questions concerning automation and drive solutions.



Assembly

The Nürmont Installations GmbH & Co. KG has over twenty years of experience in the field of assembly and relocation of machines and plants. Nürmont operates globally and offers solutions from one source. Beginning with project planning up to after sales service – also as a main contractor – Nürmont covers all relevant services in the assembly and relocation field. Together with logistics, special part manufacturing and electrical assembly, as well as commissioning and service support.

Training

Only with well-trained employees you can quickly respond to challenges. We offer training onsite and in our training center. On the basics of electrical drive engineering, on maintenance of switching stations, controllers and drives, and on selective troubleshooting in the broader range of printing technology and drive engineering. In cooperation with you, we create a flexible training program that is specifically tailored to the training needs of your employees.

Service

The correct repair and spare parts must instantly be available to immediately remedy a failure of your system. In cooperation with you, we develop an extensive service plan and make a technically sound and cost-optimized selection of components that you should keep on hand. We ensure the functional state of your stock of spare parts and deliver components that are missing in an emergency – day and night via express.

Maintenance

A professionally maintained machine means safety. Safeguarded production and safety for your employees. Our Condition Monitoring Systems, for example, recognize in advance possible causes of failure and increase the availability of your machine.

Repair

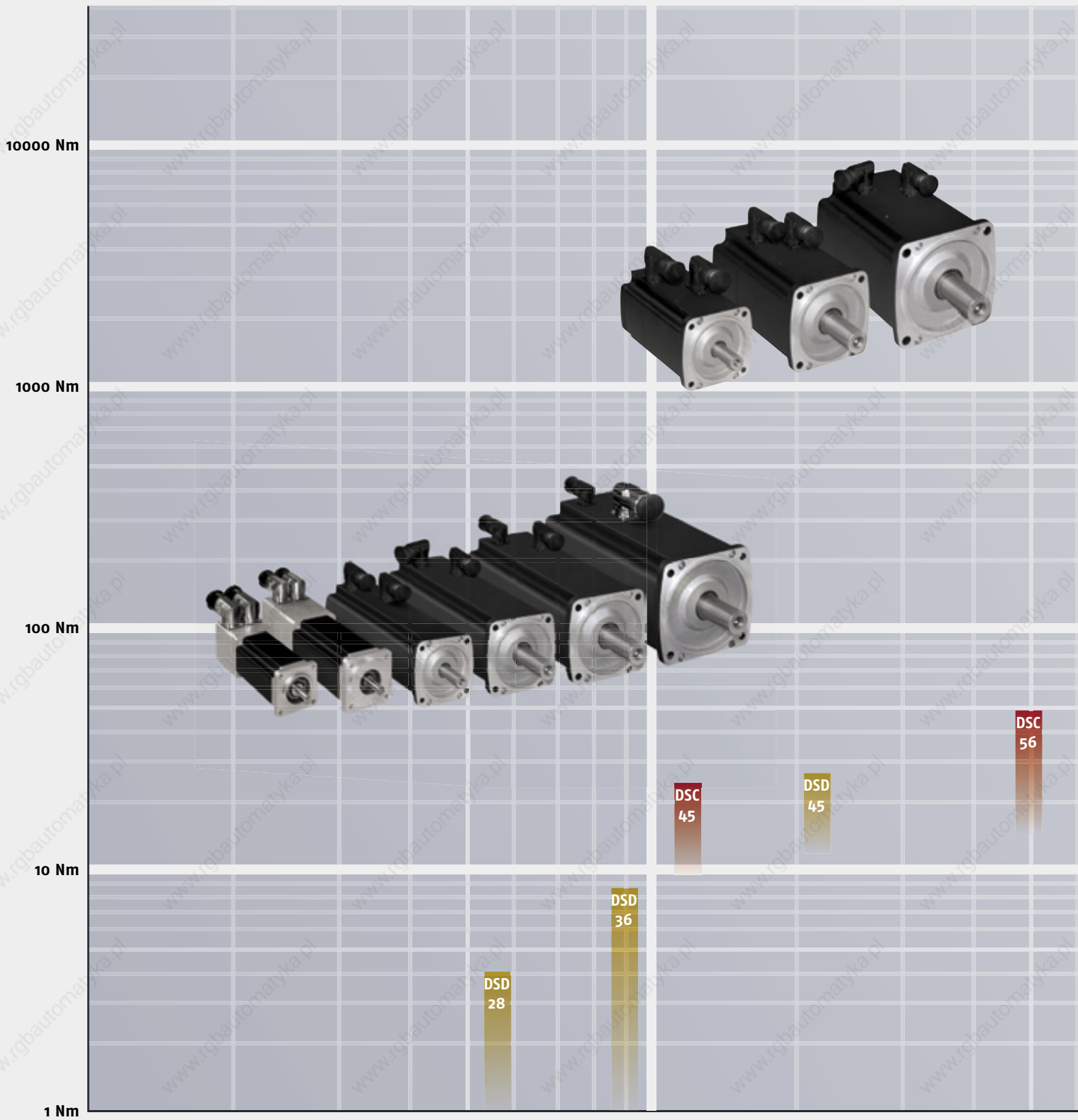
The extensive experience, our know-how, as well as the technical equipment of our worldwide subsidiaries are the basis for high quality repair of your electronical units and electrical machines, from exchanging broken parts up to general overhaul – independent of the manufacturer.

Retrofit

We retrofit existing systems with up-to-date drive systems, control cabinets and user interfaces, so that your system can execute a failure-free, state-of-the-art production. With a retrofit of your existing machine architecture, you are able to achieve higher system flexibility and availability in a very short time.

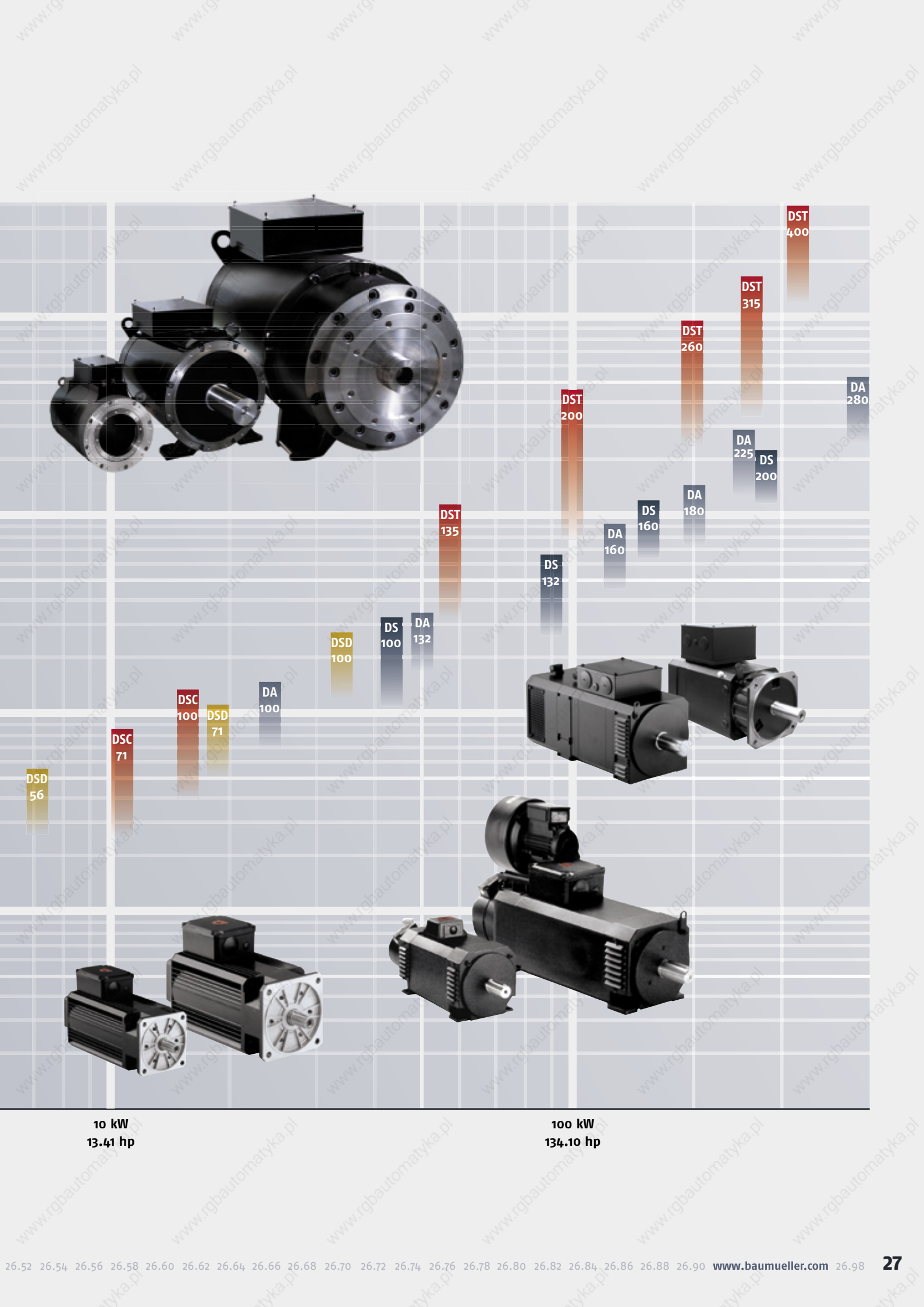


Range of motors DSD – DSC – DST – DS/DA



The stated data are maximum values.

1 kW
1.34 hp



DSD
56

DSC
71

DSC
100

DSD
71

DA
100

DSD
100

DS
100

DA
132

DST
135

DS
132

DA
160

DS
160

DA
180

DA
225

DS
200

DST
200

DST
260

DST
315

DST
400

DA
280

10 kW
13.41 hp

100 kW
134.10 hp

Headquarters

Baumüller Nürnberg GmbH

Ostendstraße 80-90, DE-90482 Nürnberg
T: +49 (0) 911 5432-0, F: +49 (0) 911 5432-130
www.baumueller.com

Baumüller Anlagen-Systemtechnik GmbH & Co. KG

Ostendstraße 84, DE-90482 Nürnberg
T: +49 (0) 911 54408-0, F: +49 (0) 911 54408-769
www.baumueller.com

Baumüller Reparaturwerk GmbH & Co. KG

Andernacher Straße 19, DE-90411 Nürnberg
T: +49 (0) 911 9552-0, F: +49 (0) 911 9552-999
www.baumueller-services.com

Baumüller DirectMotion GmbH

Ostendstraße 80, DE-90482 Nürnberg
Standort Bad Gandersheim:
Flugplatzweg 2, DE-37581 Bad Gandersheim
T: +49 (0) 5382 9805-0, F: +49 (0) 5382 9805-55
www.baumueller.com

Nürmont Installations GmbH & Co. KG

Am Keuper 14, DE-90475 Nürnberg
T: +49 (0) 9128 9255-0, F: +49 (0) 9128 9255-333
www.nuermont.com

Subsidiaries

Argentina

Mektron
Ingeniería y desarrollo, Maza 1452 C.A.B.A.,
Buenos Aires, ARG
T: +54 11 4931 8721, F: +54 11 4931 8721

Australia

Baumüller Australia Pty. Ltd.
19 Baker Street, Botany NSW 2019, Sydney, AU
T: +61 2 83350-100, F: +61 2 83350-169

Austria

Baumüller Austria GmbH
Im Bäckerfeld 17, AT-4060 Leonding
T: +43 (0) 732 674414-0, F: +43 (0) 732 674414-32

Brazil

NC Service Indústria e Comércio Ltda.
Av. Tamboré, 1217 Barueri-SP, BR-06460-000
T: +55 (0) 11 4134-0502, F: +55 (0) 11 4195-2479

China

Baumüller Automation Equipment Trading
(Shanghai) Co., Ltd.
T20-3, No. 258 Jinzang Road Jinqiao Export
Processing Zone, Pudong, 201206 Shanghai, CN
T: +86 (0) 21 5031 0336, F: +86 (0) 21 5031 6106

China

Beijing Yanghai Automation Technology Co., Ltd.
Room 1008, No.7, Huaqing Business Building,
Huaqing Garden, Wudaokou, Haidian District,
100083 Beijing, CN
T: +86 (0) 10 8286 7980, F: +86 (0) 10 8286 7987

France

Baumüller France S.à.r.l.
Parc Saint Exupéry 6 bis, rue Maryse Bastié,
FR-69500 Bron
T: +33 (0) 4 3724 0900, F: +33 (0) 4 7826 3420

France

Baumüller France S.à.r.l.
9 rue de la Durance, FR-67100 Strasbourg
T: +33 (0) 3 8840 1251, F: +33 (0) 3 8840 0724

Germany - Darmstadt

Baumüller Nürnberg GmbH
Waldstraße 1, DE-64347 Griesheim
T: +49 (0) 6155 8430-0, F: +49 (0) 6155 8430-20

Deutschland - Dresden

Baumüller Nürnberg GmbH
Fritz-Reuter-Str.34a, DE-01097 Dresden
T: +49 (0) 911 5432-515, F: +49 (0) 911 5432-99518

Germany - Freiberg

Nürmont Installations GmbH & Co. KG
Am Junger Löwe Schacht 11, DE-09599 Freiberg
T: +49 (0) 3731 3084-0, F: +49 (0) 3731 3084-33

Germany - Hannover

Baumüller Nürnberg GmbH
Bohlenweg 10, DE-30853 Langenhagen
T: +49 (0) 511 771 968-0, F: +49 (0) 511 771 968-77

Germany - München

Baumüller Reparaturwerk GmbH & Co. KG
Meglingerstraße 58, DE-81477 München
T: +49 (0) 89 748 898-0, F: +49 (0) 89 748 898-55

Germany - Neuruppin

Nürmont Installations GmbH & Co. KG
Alfred-Wegener-Straße 15, DE-16816 Neuruppin
T: +49 (0) 3391 40597-0, F: +49 (0) 3391 40597-19

Germany - Rossau

Baumüller Anlagen-Systemtechnik GmbH & Co. KG
Am Rossauer Wald 7, DE-09661 Rossau
T: +49 (0) 37207 6508-10, F: +49 (0) 37207 6508-61

Great Britain

Baumüller UK (South) Ltd.
14 Redlands Centre, GB-Coulsdon, Surrey CR5 2HT
T: +44 (0) 208-763 2990, F: +44 (0) 208-763 2959

Great Britain

Baumüller UK (North) Ltd.
Cyprus Building, Mossley, GB-Lancashire, OL5 9BL
T: +44 (0) 1457 8374-95, F: +44 (0) 1457 8374-90

India

Baumüller India Pvt. Ltd.
„Kavi“ - Survey- 94/ 7, Plot- 38, Paud Road,
Bhusari Colony, Kohtrud, IN-411038 Pune
T: +91 20 401603 33, F: +91 20 254241 79

Israel

SERVI-TECH LTD.
48d HaHaroset St. Building 34/10
P.O.B 6371, Ind. Zone Carmiel 20651
T: +972-4-9589550, F: +972-4-9589551

Italy

Baumüller Italia S.r.l.
Viale Italia 12, IT-20094 Corsico (MI)
T: +39 02 45100-181, F: +39 02 45100-426

Netherlands

Baumüller Benelux B.V.
Regenbeemd 6, NL-4825 AT Breda
T: +31 (0) 76 5717111, F: +31 (0) 76 5871211

Poland

Mekelburger Polska
Ul. Kóscielna 39 F/3, PL-60537 Poznań
T: +48 601 87 87 03, F: +48 (0) 61 8481 520

Russia

ProSensor
Zavodskaya Street 1B building 2
RU-124365 Moscow, Zelenograd,
T: +7 495 6428 476, F: +7 495 6428 477

Slovenia, Croatia

Baumüller Dravinja d.o.o.
Delavska cesta 10, SI-3210 Slovenske-Konjice
T: +386 3 75723-00, F: +386 3 75723-32/33

South Africa

Motion Tronic cc
Unit 18 Wareing Park, ZA-3610 Pinetown
T: +27 31 7011620, F: +27 86 6150597

South Korea

Bomac Systems
417 Yucheon Factophia, 196 Anyang-7 dong,
Mananku, Anyangsi, Kyungkido 430-017, KR
T: +82 31 467-2030, F: +82 31 467-2033

Spain

Baumüller Ibérica S.A.
C/ Crom, 35-37, 2928, ES-08907 Hospitalet de
Llobregat, T: +34 93 263 0985, F: +34 93 263 2059

Switzerland

Baumüller Swiss AG
Oberwiesenstrasse 75, CH-8500 Frauenfeld
T: +41 (0) 52 723 28-00, F: +41 (0) 52 723 28-01

Thailand

Mr. Tom Sale and Service Co., Ltd.
39/9 Moo 1, Tepkanjana Rd., Tambol Nadee
Amphur Muang, TH-74000 Samutsakorn
T: +66 34 854932-4, F: +66 34 854935

Turkey

Baumüller Motor Kontrol Sistem San. ve Tic. Ltd. Sti.
Girne Mah., Kücükalyalı Is Merkezi, B Blok No. 12
Maltepe, TR-34852 Maltepe - Istanbul
T: +90 216 519-9071, F: +90 216 519-9072

USA

Baumüller-Nuermont Corp.
1858 S. Elmhurst Road, US-Mount Prospect,
IL 60056, T: +1 847 956-7392, F: +1 847 956-7925

USA

Baumüller-Nuermont Corp.
1555 Oakbrook Drive Suite 120, US-Norcross,
GA 30093, T: +1 678 291-0535, F: +1 678 291-0537

USA

Baumüller-Nuermont Corp.
429 B Hayden Station Road, US-Windsor,
CT 06095, T: +1 860 243-0232, F: +1 860 286-3080

Venezuela, Colombia, Ecuador

Nimbus International
6861 SW 196th Ave, Ste. 304, US-Pembroke Pines,
FL 33332, T: +1 954 252-9242, F: +1 954 252-5372

30 40 42 54 64 84 115 128 173 192

be in motion be in motion

1000 2000 3000 4000 5000 6000

Responsible for content: **Baumüller Nürnberg GmbH** Ostendstraße 80-90 90482 Nürnberg T: +49 (0) 911 5432-0 F: +49 (0) 911 5432-130 www.baumueller.com
Baumüller Anlagen-Systemtechnik GmbH & Co. KG Ostendstraße 84 90482 Nürnberg T: +49 (0) 911 54408-0 F: +49 (0) 911 54408-769
Baumüller Reparaturwerk GmbH & Co. KG Andernacher Straße 19 90411 Nürnberg T: +49 (0) 911 9552-0 F: +49 (0) 911 9552-999
Baumüller DirectMotion GmbH Ostendstraße 80 90482 Nürnberg
Location Bad Gandersheim: Flugplatzweg 2 37581 Bad Gandersheim T: +49 (0) 5382 9805-0 F: +49 (0) 5382 9805-55