

Description

Magnecraft General Purpose Relays

750 Series

DPDT and 3DPT, 10 A



UL listed when used with proper Magnecraft sockets



750 Clear Cover



750 Full-Feature Cover

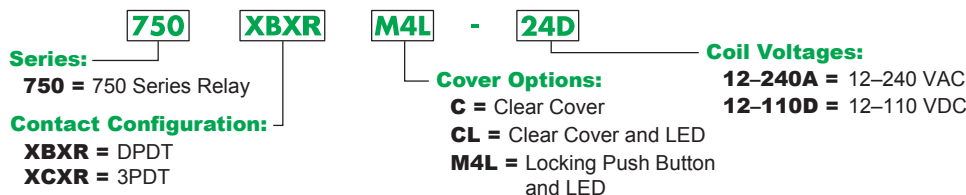
Description

The 750 series octal base, plug-in relays offer clear or full-feature covers with multiple mounting options and accessories.

| Feature | Benefit |
|--------------------------------------|--|
| Octal style mounting | Robust and historically-proven mounting platform that provides excellent structural support |
| 10 A max. switching current | Ideal for automation panels and controls |
| Clear or full-feature cover options | Full-feature covers include LED indicator and locking test button |
| DPDT and 3PDT contact configurations | Simultaneously control separate circuits |
| Socket mount option | Simplifies installation and maintenance while also allowing the use of protection modules, hold-down clips and other accessories |
| Gold-flashed contacts | Reduces contact oxidation and increases shelf life |
| Mechanical flag indicator | Standard feature displays relay status during testing or operation |

| Contact Rating | Contact Configuration | Nominal Voltage | Coil Resistance (Ω) | Standard Part Number: Clear Cover | Standard Part Number: Clear Cover with LED | Standard Part Number: Full-Feature |
|----------------|-----------------------|-----------------|---------------------|-----------------------------------|--|------------------------------------|
| 10 A | DPDT | 12 Vac 50/60Hz | 16.9 | 750XBXRC-12A | 750XBXRCL-12A | 750XBXRM4L-12A |
| | | 24 Vac 50/60Hz | 72 | 750XBXRC-24A | 750XBXRCL-24A | 750XBXRM4L-24A |
| | | 120 Vac 50/60Hz | 1700 | 750XBXRC-120A | 750XBXRCL-120A | 750XBXRM4L-120A |
| | | 240 Vac 50/60Hz | 6800 | 750XBXRC-240A | 750XBXRCL-240A | 750XBXRM4L-240A |
| | | 12 Vdc | 120 | 750XBXRC-12D | 750XBXRCL-12D | 750XBXRM4L-12D |
| | | 24 Vdc | 470 | 750XBXRC-24D | 750XBXRCL-24D | 750XBXRM4L-24D |
| | | 48 Vdc | 1800 | 750XBXRC-48D | 750XBXRCL-48D | 750XBXRM4L-48D |
| | 110 Vdc | 7300 | 750XBXRC-110D | 750XBXRCL-110D | 750XBXRM4L-110D | |
| | 3PDT | 12 Vac 50/60Hz | 16.9 | 750XCXRC-12A | 750XCXRCL-12A | 750XCXRM4L-12A |
| | | 24 Vac 50/60Hz | 72 | 750XCXRC-24A | 750XCXRCL-24A | 750XCXRM4L-24A |
| | | 120 Vac 50/60Hz | 1700 | 750XCXRC-120A | 750XCXRCL-120A | 750XCXRM4L-120A |
| | | 240 Vac 50/60Hz | 6800 | 750XCXRC-240A | 750XCXRCL-240A | 750XCXRM4L-240A |
| | | 12 Vdc | 120 | 750XCXRC-12D | 750XCXRCL-12D | 750XCXRM4L-12D |
| | | 24 Vdc | 470 | 750XCXRC-24D | 750XCXRCL-24D | 750XCXRM4L-24D |
| 48 Vdc | | 1800 | 750XCXRC-48D | 750XCXRCL-48D | 750XCXRM4L-48D | |
| 110 Vdc | 7300 | 750XCXRC-110D | 750XCXRCL-110D | 750XCXRM4L-110D | | |

Part Number Explanation



Please contact Customer Service for more information (847-441-2540).

Magnecraft General Purpose Relays

750 Series

DPDT and 3DPT, 10 A

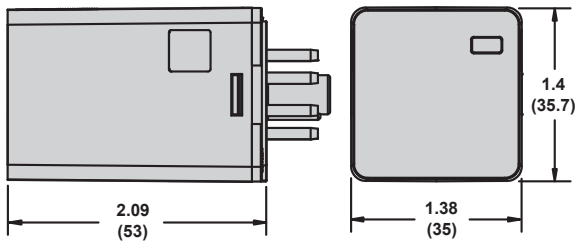
Specifications

| Part Number | 750XBXR | 750XCXR |
|--|--|--|
| Contact Characteristics | | |
| Terminal Style | Octal | Octal |
| Contact Configuration | DPDT | 3PDT |
| Maximum Current | 10 A | 10 A |
| Contact Materials | Silver Alloy | Silver Alloy |
| Maximum Switching Voltage | IEC: 250 Vac / 28 Vdc UL/CSA: 300 Vac / 30 Vdc | IEC: 250 Vac / 28 Vdc UL/CSA: 300 Vac / 30 Vdc |
| Rated Switching Current at Voltage (Conforming to IEC AC-1 and DC-1) | NO: 10 A at 250 Vac, NC: 5 A at 250 Vac NO: 10 A at 28 Vdc, NC: 5 A at 28 Vdc | NO: 10 A at 250 Vac, NC: 5 A at 250 Vac NO: 10 A at 28 Vdc, NC: 5 A at 28 Vdc |
| Rated Switching Current at Voltage (Conforming to UL) | Resistive: 10 A at 277 Vac 50 / 60 Hz, 200k cycles Resistive: 10 A at 30 Vdc, 200k cycles Motor: 1/3 HP at 120 Vac, 6k cycles Motor: 1 HP at 277 Vac, 6k cycles Pilot Duty: B300, 6k cycles | Resistive: 10 A at 277 Vac 50 / 60 Hz, 200k cycles Resistive: 10 A at 30 Vdc, 200k cycles Motor: 1/3 HP at 120 Vac, 6k cycles Motor: 1 HP at 277 Vac, 6k cycles Pilot Duty: B300, 6k cycles |
| Minimum Switching Requirement | 10 mA at 17 Vdc | 10 mA at 17 Vdc |
| Coil Characteristics | | |
| Maximum Operating Voltage | 110% (AC / DC) | 110% (AC / DC) |
| Maximum Pickup Voltage | 85% (AC); 80% (DC) | 85% (AC); 80% (DC) |
| Drop-out Voltage Threshold | 15% (AC); 10% (DC) | 15% (AC); 10% (DC) |
| Average Consumption | 3 VA (AC); 1.4 W (DC) | 3 VA (AC); 1.4 W (DC) |
| General Characteristics | | |
| Electrical Life at Rated Load | 100,000 operations | 100,000 operations |
| Mechanical Life | 5,000,000 operations | 5,000,000 operations |
| Operating Time (Response Time) | 20 ms | 20 ms |
| Dielectric Strength - Between Coil and Contact (AC) | 2500 V(rms) | 2500 V(rms) |
| Dielectric Strength - Between Poles (AC) | 2000 V(rms) | 2000 V(rms) |
| Dielectric Strength - Between Open Contacts (AC) | 1500 V(rms) | 1500 V(rms) |
| Ambient Air Temperature around the Device - Storage | -40 to +85 °C (-40 to +185°F) | -40 to +85 °C (-40 to +185 °F) |
| Ambient Air Temperature around the Device - Operation | -40 to +55 °C (-40 to +131°F) | -40 to +55 °C (-40 to +131 °F) |
| Vibration Resistance - Operational | +/- 1 mm (10–35 Hz) and 3 g-n (35–150 Hz) | +/- 1 mm (10–35 Hz) and 3 g-n (35–150 Hz) |
| Shock Resistance | 10 g-n | 10 g-n |
| Degree of Protection (Housing Only) | IP 40 | IP 40 |
| Weight | 83 g (2.93 oz) | 83 g (2.93 oz) |
| Agency Approvals | UL with socket, UR (E164862), CE, CSA (225619), RoHS | |

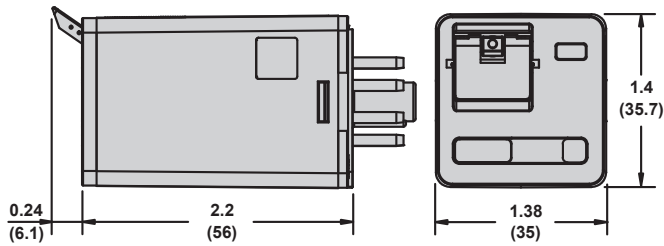
Note: Actual product performance may vary depending on application and environmental conditions.

Dimensions — inches (millimeters)

Clear Cover Dimensions

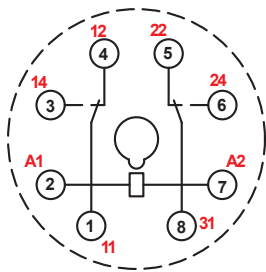


Full-Feature Cover Dimensions

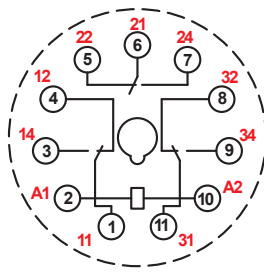


Wiring Diagrams

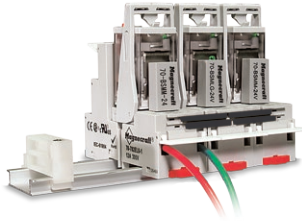
DPDT



3PDT



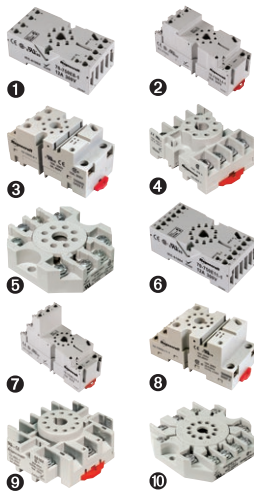
NEMA
IEC



Description

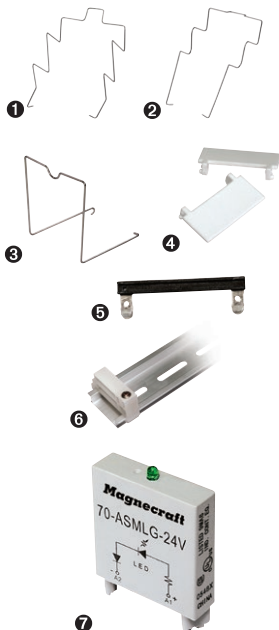
Optional sockets offer customizable, Fingersafe solutions including protection modules, hold-down clips, and ID tags. Sockets are DIN rail and panel mount compatible.

Relay Accessories



| Description | Function | For Use With Relays | Pkg. Min. | Standard Part Number |
|-------------|--|---------------------|-----------|----------------------|
| Socket 1 | DIN/Panel mount, module compatible | 750XBXR | 10 | 70-750E8-1 |
| Socket 2 | DIN/Panel mount with elevator terminals, module compatible | 750XBXR | 10 | 70-750EL8-1 |
| Socket 3 | DIN/Panel mount, module compatible | 750XBXR | 10 | 70-750DL8-1 |
| Socket 4 | DIN/Panel mount with screw terminals and clamping plates | 750XBXR | 10 | 70-464-1 |
| Socket 5 | Panel mount with screw terminals and clamping plates | 750XBXR | 10 | 70-169-1 |
| Socket 6 | DIN/Panel mount with elevator terminals, module compatible | 750XCXR | 10 | 70-750E11-1 |
| Socket 7 | DIN/Panel mount with elevator terminals | 750XCXR | 10 | 70-750EL11-1 |
| Socket 8 | DIN/Panel mount, module compatible | 750XCXR | 10 | 70-750DL11-1 |
| Socket 9 | DIN/Panel mount with screw terminals and clamping plates | 750XCXR | 10 | 70-465-1 |
| Socket 10 | Panel mount with screw terminals and clamping plates | 750XCXR | 10 | 70-170-1 |

Socket Accessories



| Description | Function | For Use With Sockets | Coil Voltage | Pkg. Min. | Standard Part Number |
|--|--|---|-----------------|-----------|----------------------|
| Metal Spring Clip 1 | Secures relay in socket | 70-750EL8-1, 70-750E8-1, 70-750E11-1, 70-464-1 | - | 10 | 16-1351 |
| Metal Spring Clip 2 | Secures relay in socket | 70-750E8-1, 70-750DL8-1, 70-750E11-1, 70-464-1 | - | 10 | 16-1344 |
| Metal Spring Clip 3 | Secures relay in socket | 70-750DL8-1 | - | 10 | 16-1332 |
| Plastic I.D. Tag 4 | Write-on plastic labels | 70-750E8-1, 70-750EL8-1, 70-750DL8-1, 70-750E11-1, 70-750EL11, 70-750DL11-1 | - | 10 | 16-750/788FT-1 |
| Insulated Coil Bus Jumper System 5 | Wireless socket connection | 70-750E8-1, 70-750EL8-1, 70-750DL8-1, 70-750E11-1, 70-464-1, 70-465-1 | - | 10 | 16-750/788CBJ-1 |
| Extruded Aluminum DIN Rail, 39.37" (1000 mm) 6 | Quick installation and removal of sockets | - | - | 10 | 16-700DIN |
| DIN Rail End Clip 6 | Plastic end clip with locking screw | - | - | 10 | 16-DCLIP-1 |
| Large Socket Module | MOV Suppressor (Protects from damaging electrical spikes) | 70-750E8-1, 70-750EL8-1, 70-750DL8-1, 70-750E11-1, 70-750DL11-1 | 24 Vac/Vdc | 10 | 70-ASMM-24 |
| Large Socket Module | Protection Diode (Protects external drive circuitry from inductive voltages) | 70-750E8-1, 70-750EL8-1, 70-750DL8-1, 70-750E11-1, 70-750DL11-1 | 250 Vdc | 10 | 70-ASMD-250 |
| Large Socket Module 7 | LED Indicator (Provides coil status at a glance) | 70-750E8-1, 70-750EL8-1, 70-750DL8-1, 70-750E11-1, 70-750DL11-1 | 110/240 Vac/Vdc | 10 | 70-ASMLG-110/240 |
| Large Socket Module | RC Suppressor (Snubs back EMF of relay coil) | 70-750E8-1, 70-750EL8-1, 70-750DL8-1, 70-750E11-1, 70-750DL11-1 | 110/240 Vac | 10 | 70-ASMR-110/240 |

Note: Use of LED or RC socket module may increase coil power draw by up to 10%.