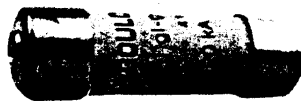


Fusibles cilíndricos industriales con percutor
 Fusibles cylindriques industriels
 avec percuteur (HPC)
 Industrial cylindrical fuse-links with striker (HRC)



17447



18419

Percutor • Percuteur • Striker

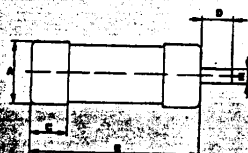
Antes
Avant
Before



Después
Après
Afterwards



| | 14 x 51 | 22 x 58 |
|---|---------|---------|
| A | 14,3 | 22,2 |
| B | 51 | 58 |
| C | 13,8 | 16,2 |
| D | 7,5 | 7,5 |
| E | 3,8 | 3,8 |

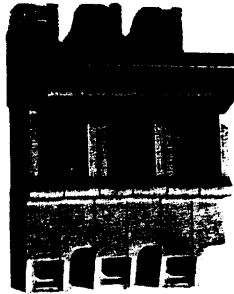


| Tamaño Taille Size | In (A) | Art. N.º | Tensión Tension Voltage (V) | Poder de corta Pouvoir de coupure Breaking capacity (A) | Caja/un. Condit/un. Packing | | | |
|--------------------------|-----------|----------|--------------------------------------|---|-----------------------------------|-----|---------|--|
| 14 x 51 | 2 | 17413 | 500 | 120.000 | 10/50 | | | |
| | 4 | 17419 | | | | | | |
| | 6 | 17423 | | | | | | |
| | 8 | 17427 | | | | | | |
| | 10 | 17431 | | | | | | |
| | 12 | 17433 | | | | | | |
| | 16 | 17435 | | | | | | |
| | 20 | 17437 | | | | | | |
| | 25 | 17439 | | | | | | |
| | 32 | 17443 | | | | | | |
| | 40 | 17447 | | | | | | |
| 50 | 17451 | 400 | | | | | | |
| 22 x 58 | 4 | 18419 | 690 | 80.000 | 10/50 | | | |
| | 6 | 18423 | | | | | | |
| | 8 | 18427 | | | | | | |
| | 10 | 18431 | | | | | | |
| | 12 | 18433 | | | | | | |
| | 16 | 18435 | | | | | | |
| | 20 | 18437 | | | | | | |
| | 25 | 18439 | | | | | | |
| | 32 | 18443 | | | | | | |
| | 40 | 18447 | | | | | | |
| | 50 | 18451 | | | | | | |
| | 63 | 18455 | | | | 500 | 120.000 | |
| | 80 | 18459 | | | | 400 | | |
| | 100 | 18463 | | | | | | |
| | 25 | 18465 | | | | | | |
| 14 x 51 | 2 | 17911 | 500 | 120.000 | 10/50 | | | |
| | 4 | 17913 | | | | | | |
| | 6 | 17919 | | | | | | |
| | 8 | 17923 | | | | | | |
| | 10 | 17927 | | | | | | |
| | 12 | 17931 | | | | | | |
| | 16 | 17933 | | | | | | |
| | 20 | 17935 | | | | | | |
| | 25 | 17937 | | | | | | |
| | 32 | 17939 | | | | | | |
| | 40 | 17943 | | | | | | |
| 50 | 17947 | 400 | | | | | | |
| 22 x 58 | 4 | 18911 | 690 | 80.000 | 10/50 | | | |
| | 6 | 18913 | | | | | | |
| | 8 | 18919 | | | | | | |
| | 10 | 18923 | | | | | | |
| | 12 | 18927 | | | | | | |
| | 16 | 18931 | | | | | | |
| | 20 | 18933 | | | | | | |
| | 25 | 18935 | | | | | | |
| | 32 | 18937 | | | | | | |
| | 40 | 18939 | | | | | | |
| | 50 | 18943 | | | | | | |
| | 63 | 18947 | | | | 500 | 120.000 | |
| | 80 | 18951 | | | | 400 | | |
| | 100 | 18955 | | | | | | |
| | 25 | 18959 | | | | | | |

Cortacircuitos modulares seccionables MS
 para fusibles cilíndricos industriales
Coupe-circuit modulaires sectionnables MS
 pour des fusibles cylindriques industriels
Modular fuse base MS
 for industrial cylindrical fuse-links



24802



24814



24820



24804



24934



24932

MS. 14 50A:690V~

Fusible tamaño • Cartouche taille • Fuse-link size: 14 x 51
 50 A:400 V~ 40 A:500 V~ 25 A:690 V~

| Polos • Pôles • Poles | Art. N.º | N.º Módulos Nombre Modules No. of modules (7,5 mm) | Caja / Cartouche Packaging |
|-----------------------|----------|---|----------------------------------|
| 1 (*)N | 24802 | 1,5 | 6 |
| (*)1 + N | 24800 | 1,5 | 6 |
| 2 | 24810 | 3 | 6 |
| 3 | 24812 | 3 | 6 |
| (*)3 + N | 24814 | 4,5 | 6 |
| 4 | 24816 | 6 | 6 |
| | 24819 | 6 | 6 |

Con indicador de fusión • Avec voyant • With indicator

| | | | |
|---|-------|-----|---|
| 1 | 24804 | 1,5 | 6 |
|---|-------|-----|---|

Con microrruptor • Avec microrupteur • With microswitch (5 A / 250 V~)

(Suministrado con 3 terminales • Livré avec 3 cosses • Supplied with 3 terminals)

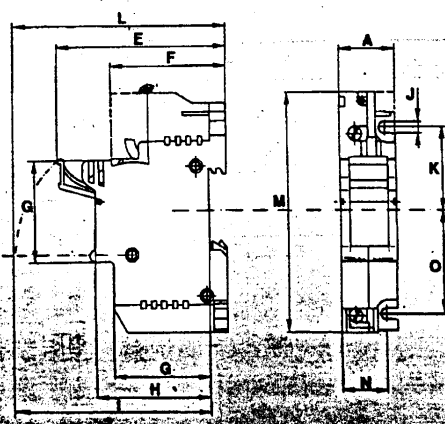
| | | | |
|--------------------|-------------------------|---------------|-------------|
| 1 3 (*)3 + N | 24820 24824 24826 | 1,5 3 6 | 6 6 6 |
|--------------------|-------------------------|---------------|-------------|

Accesorios • Accessoires • Accessories

| Para ensamblar 2 polos Pour assembler 2 pôles For assembly of 2 poles | | | |
|---|----------------------------------|--|-------------------|
| 2 3 4 300 mm | 24930 24931 24932 24933 | | 10 6 6 6 |
| Microrruptor • Microrupteur • Microswitch 5 A - 250 V~ | 24934 | | 5 |

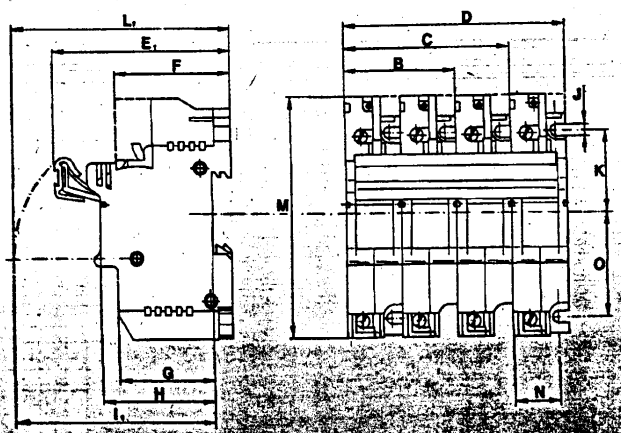
(*) Con neutro incorporado • Avec neutre équipé • With neutral incorporated

Unipolares • Unipolaires • Unipolar



| | MS14 |
|----------------|------|
| A | 26 |
| B | 52 |
| C | 78 |
| D | 104 |
| E | 81 |
| E ₁ | 83 |
| F | 53,5 |
| G | 44,5 |
| H | 52,6 |
| I | 89 |
| I ₁ | 91 |
| J | 5 |
| K | 32,5 |
| L | 98 |
| L ₁ | 100 |
| M | 106 |
| N | 21 |

Multipolares • Multipolaires • Multipolar



Cortacircuitos modulares seccionables MS

para fusibles cilindricos industriales

Coupe-circuit modulaires sectionnables MS

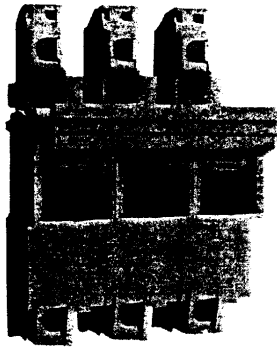
pour des fusibles cylindriques industriels

Modular fuse base MS

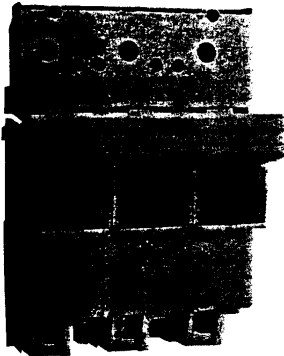
for industrial cylindrical fuse-links



25002



25014



25024



25134



25131

MS. 22 125A:690V~

Fusible tamaño • Cartouche taille • Fuse-link size: 22 x 58
125 A:400 V~ 100 A:500 V~ 80 A:690 V~

| Polos • Pôles • Poles | Art. N.º | Nº Módulos Nombre Modules No. of modules (175 mm) | Caja/u. Conditi/ Packing |
|-----------------------|----------|--|--------------------------------|
| 1 | 25002 | 2 | 6 |
| (*) N | 25000 | 2 | 6 |
| (*) 1 + N | 25010 | 3 | 6 |
| 2 | 25012 | 4 | 6 |
| 3 | 25014 | 6 | 6 |
| (*) 3 + N | 25016 | 8 | 6 |
| 4 | 25019 | 8 | 6 |

Con microrruptor • Avec microrrupteur • With microswitch (5 A / 250 V~)

(Suministrado con 3 terminales • Livré avec 3 cosses • Supplied with 3 terminals)

| | | | |
|-----------|-------|---|---|
| 1 | 25020 | 2 | 6 |
| 3 | 25024 | 3 | 6 |
| (*) 3 + N | 25026 | 4 | 6 |

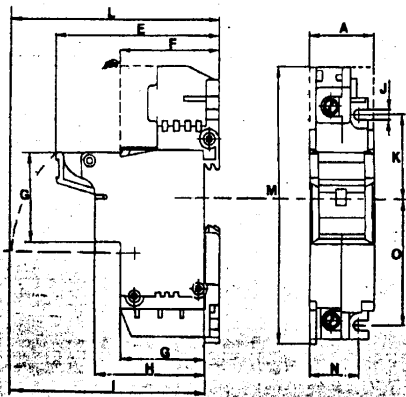
Accesorios • Accessoires • Accesories

Parti para ensamblar en todo el mundo
Parti pour assembler partout
Part for assembly in the world

| | | | |
|--|-------|----|---|
| 2 | 25130 | 10 | 6 |
| 3 | 25131 | 10 | 6 |
| 4 | 25132 | 10 | 6 |
| 300 mm | 25133 | 10 | 6 |
| Microrruptor • Microrrupteur • Microswitch 5 A - 250 V~ | 25134 | 10 | 6 |

(*) Con neutro incorporado • Avec neutre équipé • With neutral incorporated

Unipolares • Unipolaires • Unipolar



| | MS 22 |
|----------------|-------|
| A | 35 |
| B | 70 |
| C | 105 |
| D | 140 |
| E | 88 |
| E ₁ | 90 |
| F | 53 |
| G | 45 |
| H | 58 |
| I | 103 |
| I ₁ | 105 |
| J | 4,5 |
| K | 45 |
| L | 112 |
| L ₁ | 114 |
| M | 140 |
| N | 26,5 |

Multipolares • Multipolaires • Multipolar

