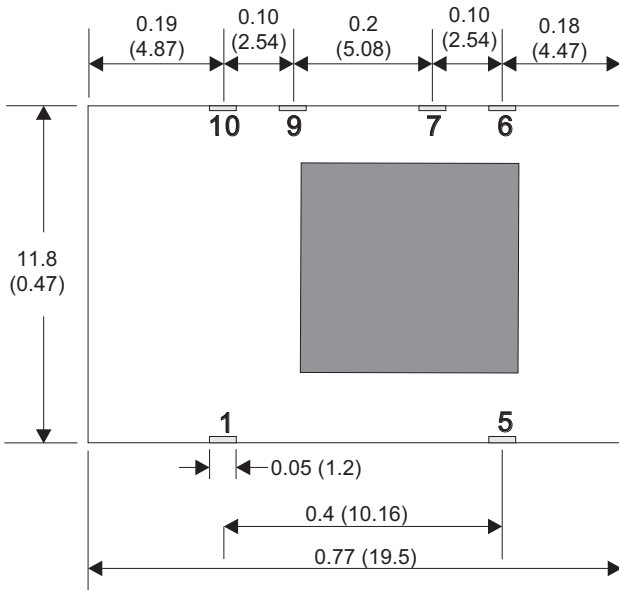
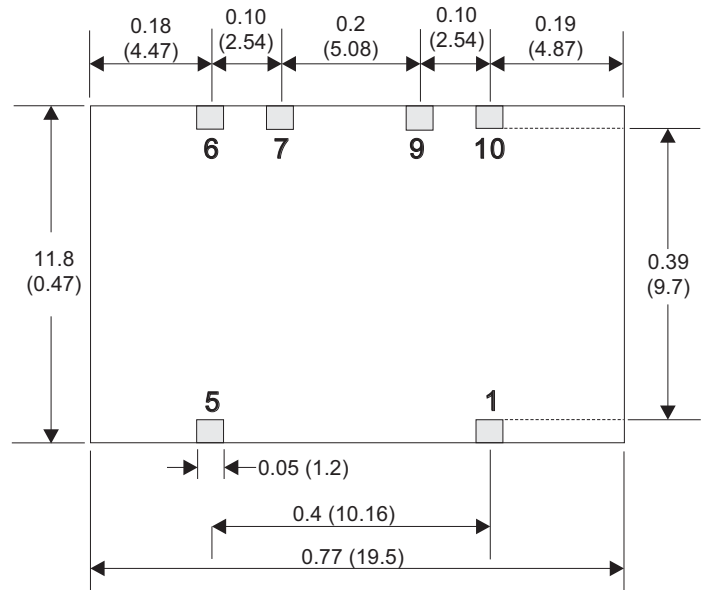


Mechanical Details

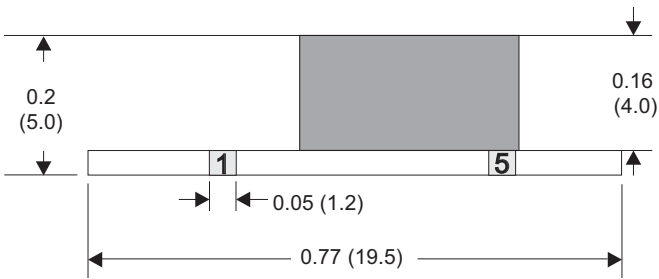
Top View



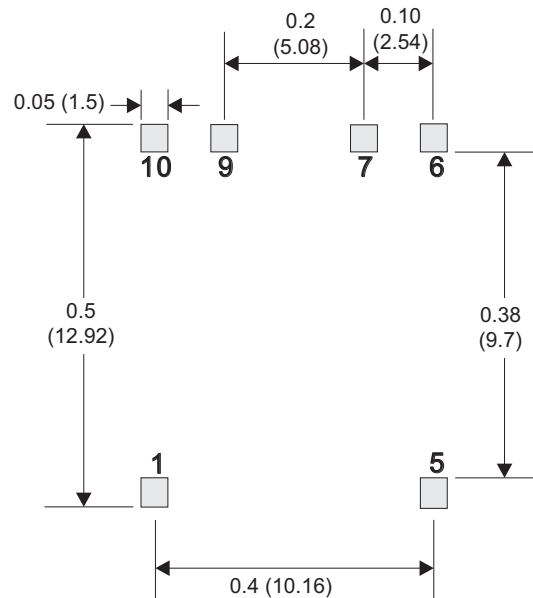
Bottom View



Side View



Solder Pad Dimension



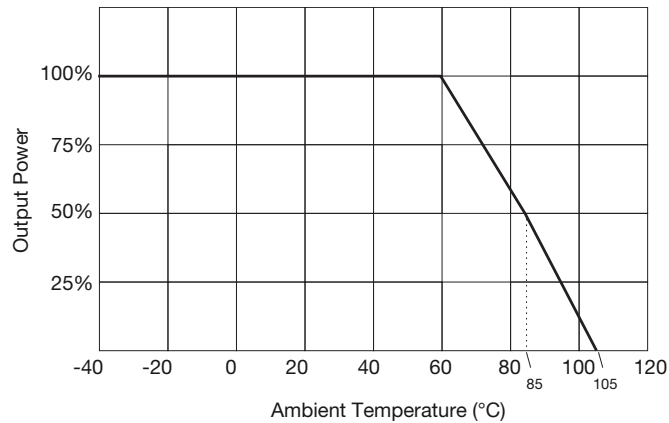
Pin Connections	
Pin	Function
1	+Vin
5	+Vout
6	Trim
7	Ground
9	Ground
10	Remote On/Off

Notes

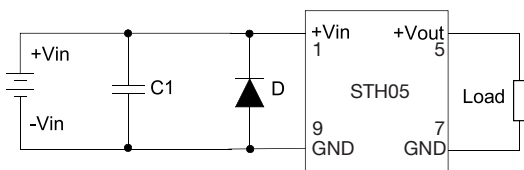
- All dimensions are in inches (mm)
- Weight: 0.0039 lbs (1.4 g) approx.
- Pin Profile Tolerance: ± 0.004 (± 0.1)
- Pin Pitch Tolerance: ± 0.01 (± 0.25)
- Other Tolerances: ± 0.02 (± 0.5)
- PCB tracks should not run under the STH05 to avoid interference and the risk of short circuit.

Application Notes

Derating Curve



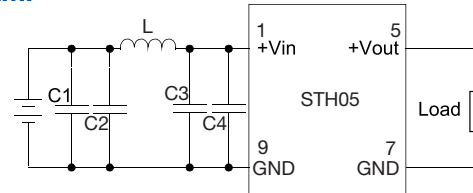
EFT & Surge



Suggested Filter : Nippon - chemi - con 330µF 100V KY series and a TVS, 3KW, 70V.

C1	D1
330 µF, 100V	SMDJ 7.0 A

EMI



Input filter components (Cin, C1, L1) are used to help meet EMI requirement for the module. These components should be mounted as close as possible to the module; and all leads should be minimized to decrease radiated noise.

C1, C2	L1	C3, C4
1206, 2.2 µF, 100V	56 µH	1206, 2.2 µF, 100V

Switching Frequency

Input Voltage	Switching Frequency	Notes
15V	540 KHz	Typical values at 20% load. Typically 50 KHz at 10% load for all variants.
12V	480 KHz	
9V	390 KHz	
7.2V	300 KHz	
6.5V	290 KHz	
5.0V	220 KHz	
3V3	180 KHz	