

# SECOM 848<sub>TC</sub>

Touch screen controller for continuous processes

## General information

### Features

The program controller SECOM 848<sub>TC</sub> is an industrial PC that has been developed and designed for the use in textile finishing applications.

A comfortable and easy operation is guaranteed by using a menu driven, touch screen supported software application in well-proven window technique.

The SECOM 848<sub>TC</sub> can be used as a stand alone controller as well as in a Windows® network environment under the machine management software OrgaTEX.



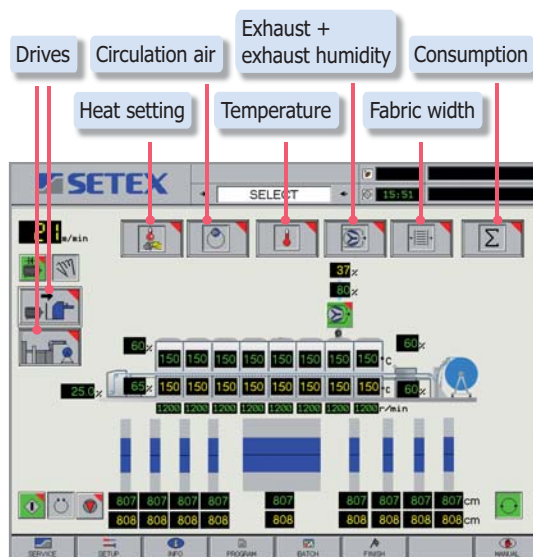
SECOM 848<sub>TC</sub>

### Application

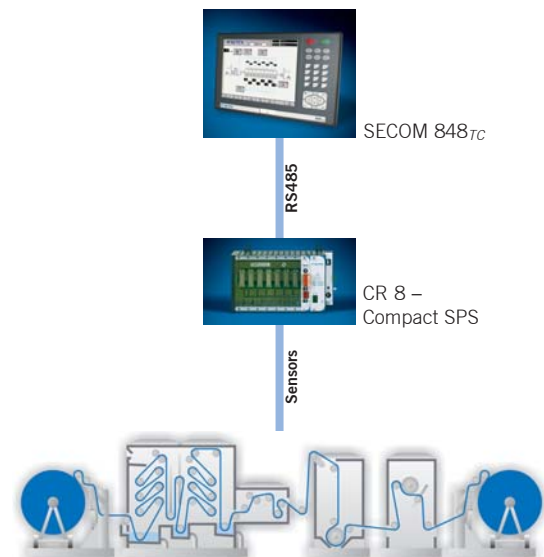
The main operational fields of the SECOM 848<sub>TC</sub> are all continuous processes in the dye- and finishing sections. The controller can universally be adapted to all kinds of machine types.

## Application example

### Software application



### Hardware application



## Specification

### Hardware

Processor: Intel processor for IPC  
S-RAM: 2 MByte  
D-RAM: 32 MByte  
Mass-storage-system: Flash Disk

### PC card slots

2x PC card

### Display

15" TFT color display with touch screen  
Resolution: 1024 x 768 Pixel

### Interfaces

RJ45: Ethernet, 10 MBit  
RS485: SETEX PLC Arcnet  
5-pol DIN: external keyboard

### Integrated UPS

Power loss protection for minimum 5 sec

### Input voltage

Nominal voltage: 24 V DC  
Range permitted: 18–36 V DC

### Power consumption

Operation: 30 VA  
Inrush current: up to 14 A for max. 5 ms

### Insulation test voltage

1500 V – the internal power supply is electrically isolated

### rotection system

Front: IP 64  
Rear: IP 22

### Ambient temperature

Operation: 0–50 °C (32–122 °F)  
Storage: 0–70 °C (32–158 °F)  
Relative humidity: 15–95% no condensation

### The unit is build in conformity with the following standards

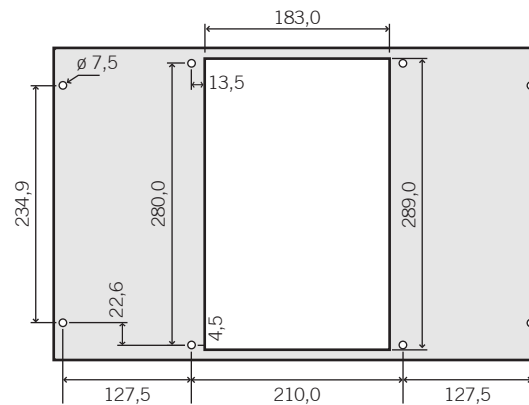
Emitted Interference: DIN EN 55022  
DIN EN 61000-6-4  
Interference resistance: DIN EN 61000-6-2  
Security: DIN EN 60950-1

### Dimensions (W x H x D)

483 x 310 x 139 mm (without connector)

### Weight

approx. 6500 g



Panel out cut: 183 x 289 mm (W x H)

Depth: 113 mm (without connector)

## Scope of delivery

### Art. no. STS51001

1 Controller SECOM 848<sub>TC</sub>  
1 SECOM mounting devices  
1 SECOM connecting devices