

$V_{RSM}$	$V_{RRM}$	(dv/dt) <sub>cr</sub>	$I_{TRMS}$ (maximum value for continuous operation)			
	$V_{DRM}$		180 A			
			$I_{TAV}$ (sin. 180; T <sub>case</sub> = 80 °C)			
V	V	V/μs	115 A			
500	400	500	–	–	SKKH 105/04 D	–
700	600	500	SKKT 105/06 D	SKKT 106/06 D	–	SKKH 106/06 D
900	800	500	SKKT 105/08 D	SKKT 106/08 D <sup>1)</sup>	SKKH 105/08 D	SKKH 106/08 D
1300	1200	1000	SKKT 105/12 E	SKKT 106/12 E <sup>1)</sup>	SKKH 105/12 E	SKKH 106/12 E
1500	1400	1000	SKKT 105/14 E	SKKT 106/14 E <sup>1)</sup>	SKKH 105/14 E	SKKH 106/14 E
1700	1600	1000	SKKT 105/16 E	SKKT 106/16 E <sup>1)</sup>	SKKH 105/16 E	SKKH 106/16 E
1900	1800	1000	SKKT 105/18 E	SKKT 106/18 E <sup>1)</sup>	SKKH 105/18 E	SKKH 106/18 E

## SEMIPACK® 1 Thyristor / Diode Modules

**SKKT 105**      **SKKH 105**  
**SKKT 106**      **SKKH 106**  
**SKKT 106B**



Symbol	Conditions	SKKT 105 SKKH 105	SKKT 106 SKKT 106B SKKH 106	Units
$I_{TAV}$	sin. 180; T <sub>case</sub> = 85 °C		106	A
$I_D$	B2/B6   T <sub>amb</sub> = 35 °C; P 3/180 F		145 / 180	A
			P 16/200 F	A
$I_{RMS}$	W1/W3   T <sub>amb</sub> = 35 °C; P 3/180 F		190 / 260	A
			200 / 3 x 140	A
$I_{TSM}$	T <sub>vj</sub> = 25 °C; 10 ms		2 250	A
	T <sub>vj</sub> = 130 °C; 10 ms		1 900	A
$i^2t$	T <sub>vj</sub> = 25 °C; 8,3 ... 10 ms		25 000	A <sup>2</sup> s
	T <sub>vj</sub> = 130 °C; 8,3 ... 10 ms		18 000	A <sup>2</sup> s
$t_{gd}$	T <sub>vj</sub> = 25 °C; I <sub>G</sub> = 1 A			μs
	di <sub>G</sub> /dt = 1 A/μs		1	μs
$t_{gr}$	V <sub>D</sub> = 0,67 · V <sub>DRM</sub>		2	μs
(di/dt) <sub>cr</sub>	T <sub>vj</sub> = 130 °C		150	A/μs
$t_q$	T <sub>vj</sub> = 130 °C		typ. 100	μs
$I_H$	T <sub>vj</sub> = 25 °C; typ./max.		150 / 250	mA
$I_L$	T <sub>vj</sub> = 25 °C; R <sub>G</sub> = 33 Ω; typ./max.		300 / 600	mA
$V_T$	T <sub>vj</sub> = 25 °C; I <sub>T</sub> = 300 A		max. 1,65	V
$V_{T(TO)}$	T <sub>vj</sub> = 130 °C		0,9	V
$r_T$	T <sub>vj</sub> = 130 °C		2	mΩ
$I_{DD}; I_{RD}$	T <sub>vj</sub> = 130 °C; V <sub>RD</sub> = V <sub>RRM</sub> V <sub>DD</sub> = V <sub>DRM</sub>		max. 20	mA
$V_{GT}$	T <sub>vj</sub> = 25 °C; d.c.		3	V
$I_{GT}$	T <sub>vj</sub> = 25 °C; d.c.		150	mA
$V_{GD}$	T <sub>vj</sub> = 130 °C; d.c.		0,25	V
$I_{GD}$	T <sub>vj</sub> = 130 °C; d.c.		6	mA
$R_{thjc}$	cont. } sin. 180 } per thyristor / rec. 120 } per module		0,28 / 0,14 0,30 / 0,15 0,32 / 0,16	°C/W °C/W °C/W
$R_{thch}$			0,2 / 0,1	°C/W
$T_{vj}$			– 40 ... + 130	°C
$T_{stg}$			– 40 ... + 125	°C
$V_{isol}$	a. c. 50 Hz; r.m.s.; 1 s/1 min		3600 / 3000	V~
$M_1$	to heatsink } SI (US) units		5 (44 lb. in.) ± 15 % <sup>2)</sup>	Nm
$M_2$	to terminals }		3 (26 lb. in.) ± 15 % <sup>2)</sup>	Nm
$a$			5 · 9,81	m/s <sup>2</sup>
$w$	approx.		95	g
Case	→ page B 1 – 95	SKKT 105: A 5 SKKH 105: A 6	SKKT 106: A 46 SKKT 106B: A 48 SKKH 106: A 47	



**SKKT 105**      **SKKH 105**



**SKKT 106**      **SKKH 106**  
**SKKT 106B**

### Features

- Heat transfer through aluminium oxide ceramic isolated metal baseplate
- Hard soldered joints for high reliability
- UL recognized, file no. E 63 532

### Typical Applications

- DC motor control (e.g. for machine tools)
- AC motor soft starters
- Temperature control (e.g. for ovens, chemical processes)
- Professional light dimming (studios, theaters)

<sup>1)</sup> Also available in SKKT 106 B configuration (case A 48)

<sup>2)</sup> See the assembly instructions

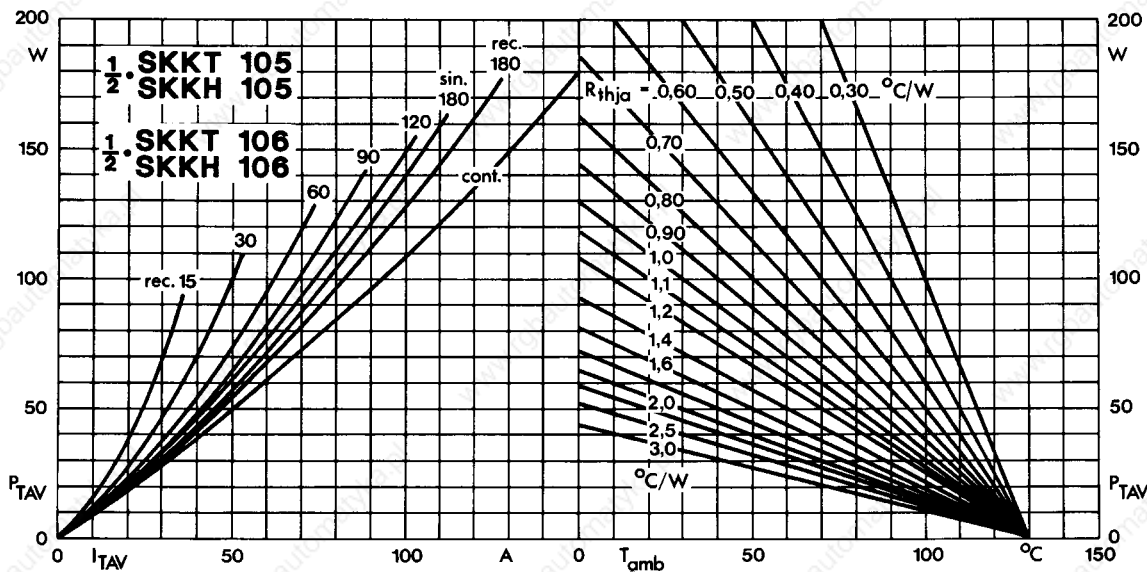


Fig. 1 Power dissipation per thyristor vs. on-state current and ambient temperature

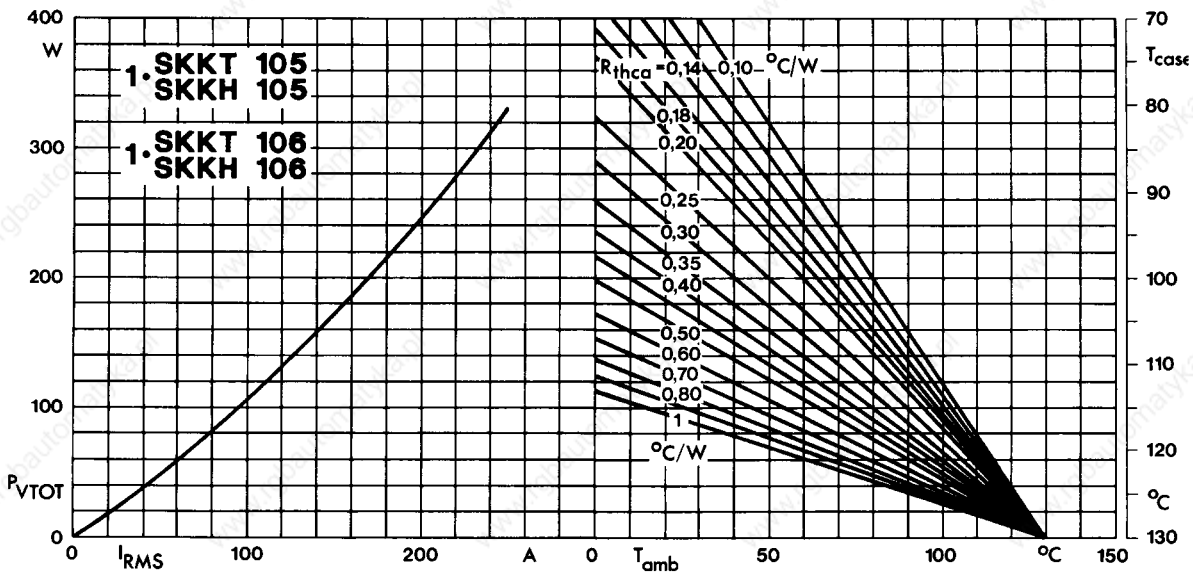


Fig. 2 Power dissipation per module vs. rms current and case temperature

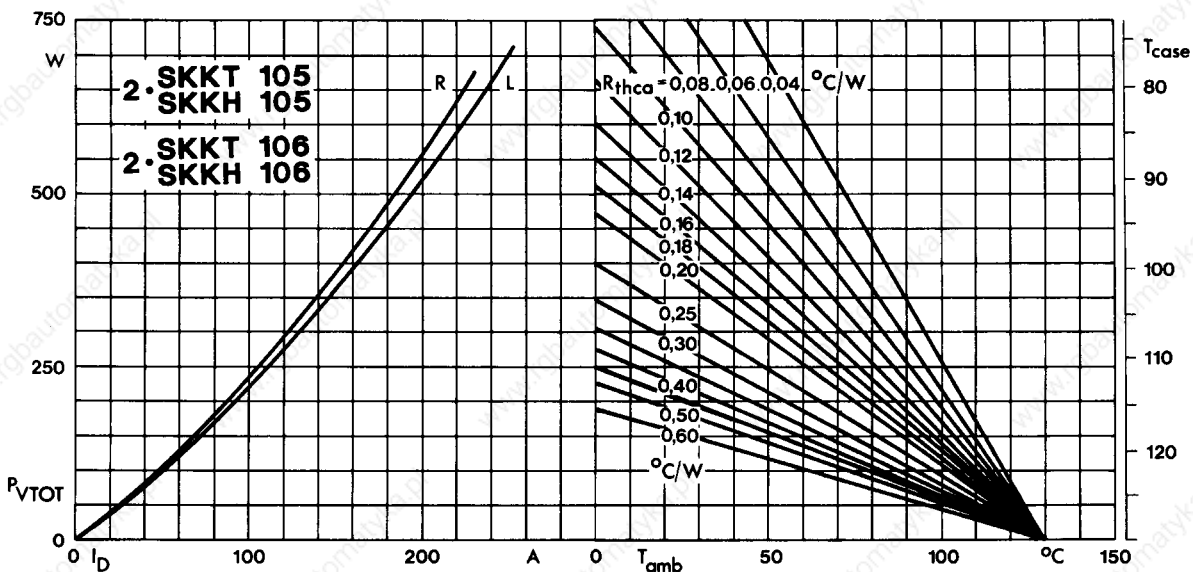


Fig. 3 Power dissipation of two modules vs. direct current and case temperature

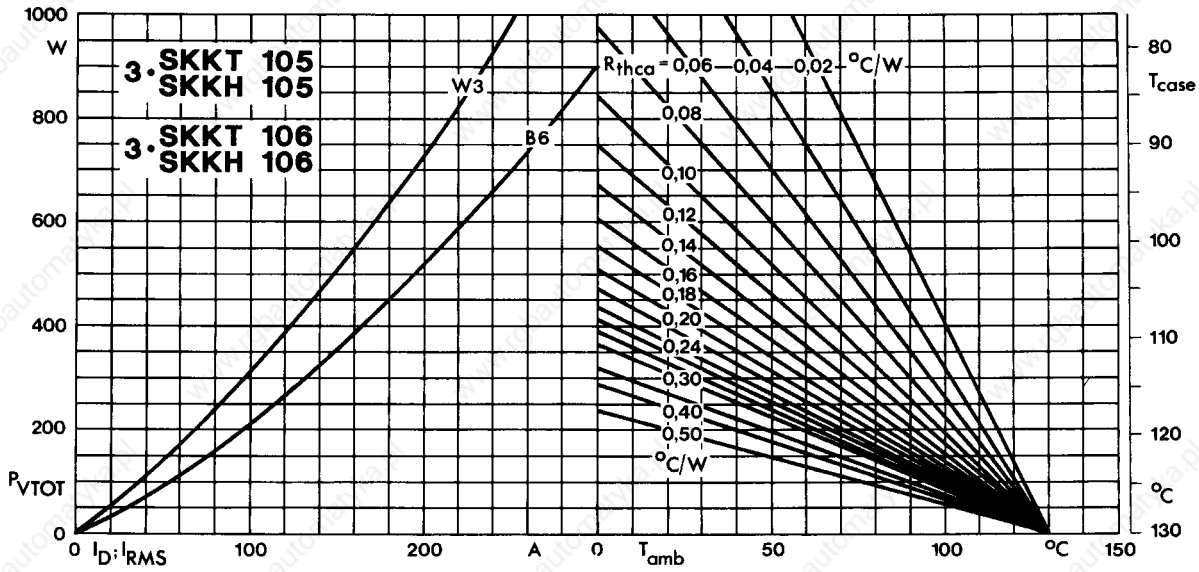


Fig. 4 Power dissipation of three modules vs. direct and rms current and case temperature

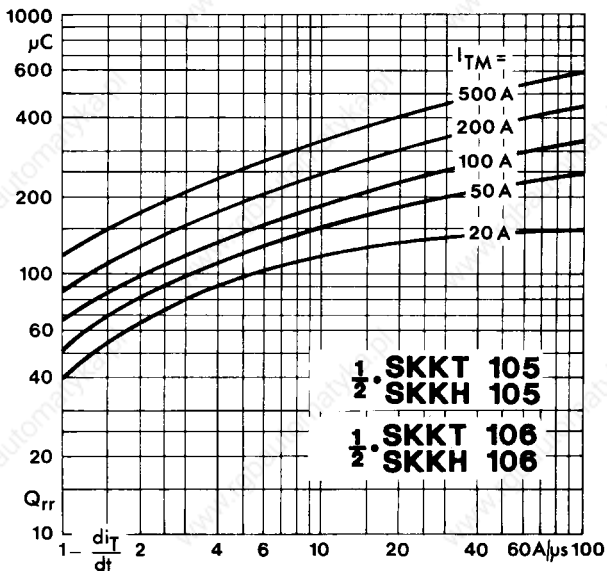


Fig. 5 Recovered charge vs. current decrease

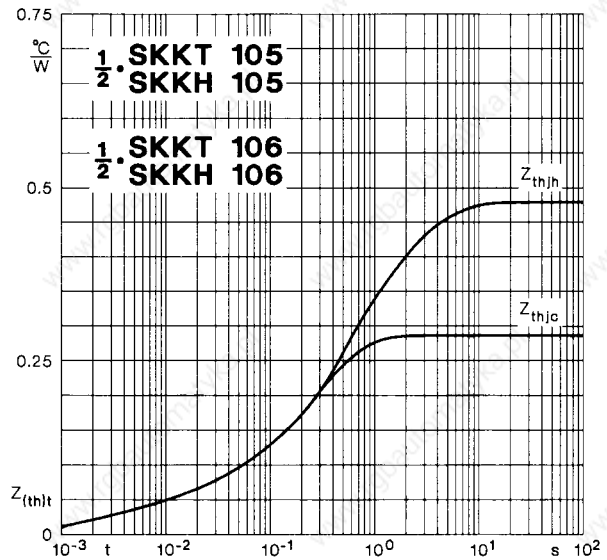


Fig. 6 Transient thermal impedance vs. time

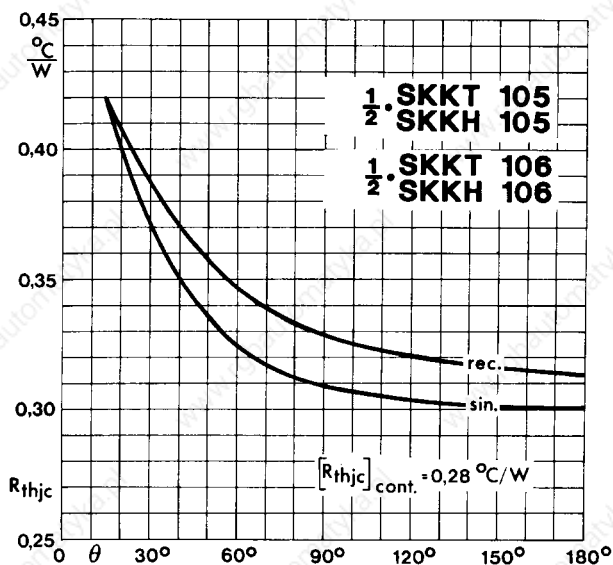


Fig. 7 Thermal resistance vs. conduction angle

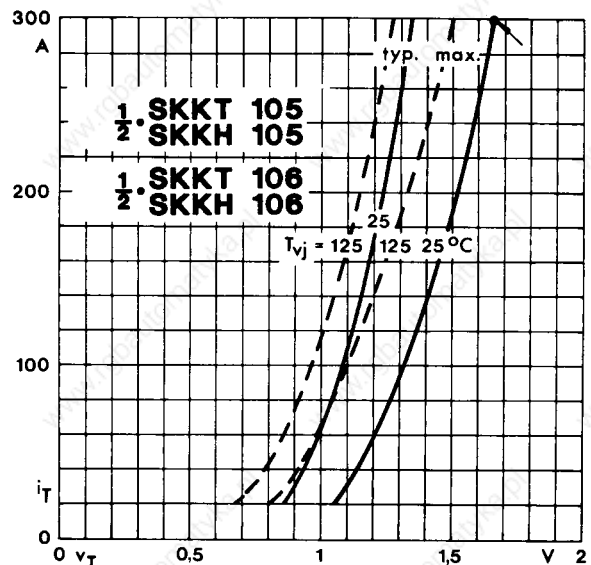


Fig. 8 On-state characteristics

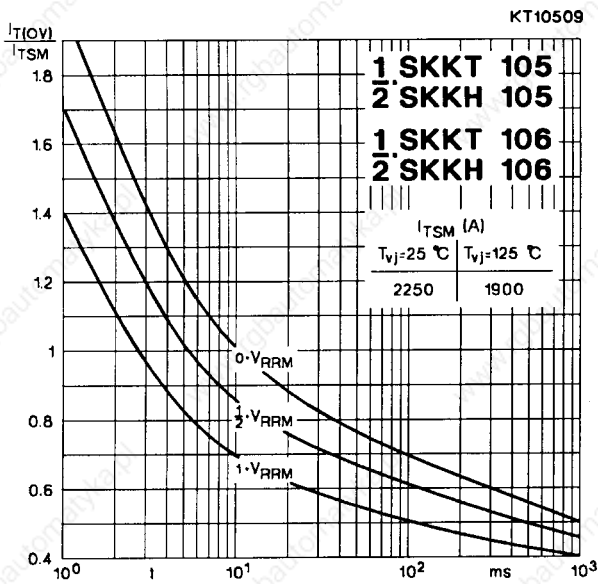


Fig. 9 Surge overload current vs. time

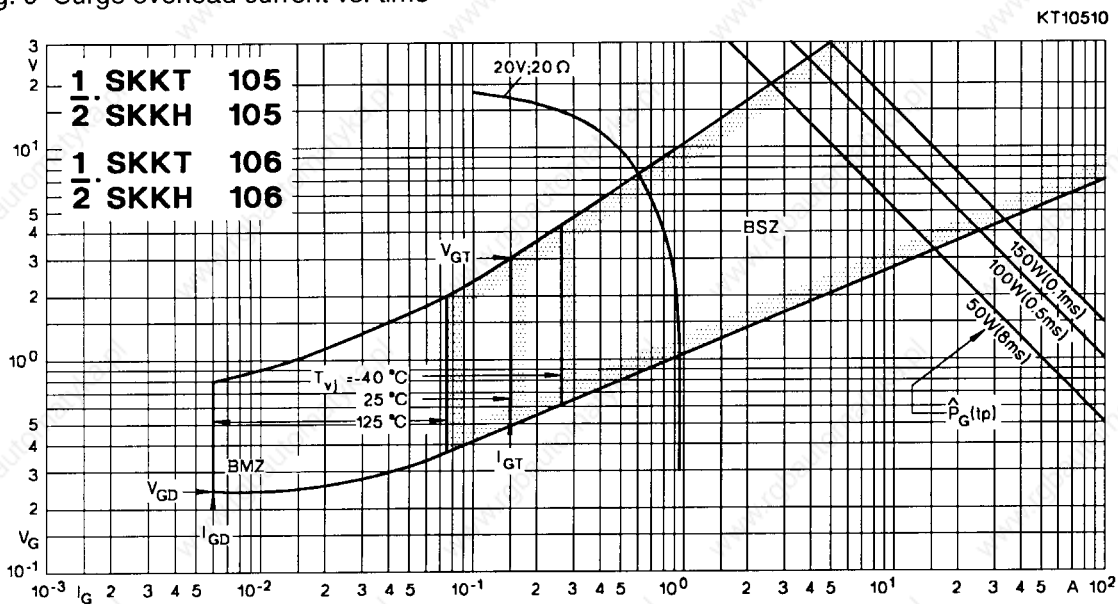


Fig. 10 Gate trigger characteristics

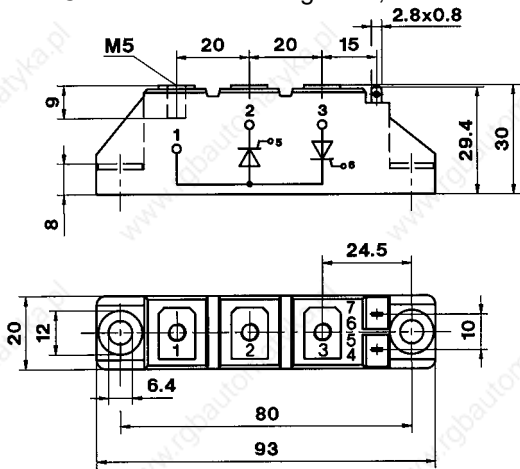
## SKKT 19 ... 105

Case A 5

IEC 192-2: A 77 A  
JEDEC: TO-240 AA

SEMIPACK® 1

UL recognized, file no. E 63 532



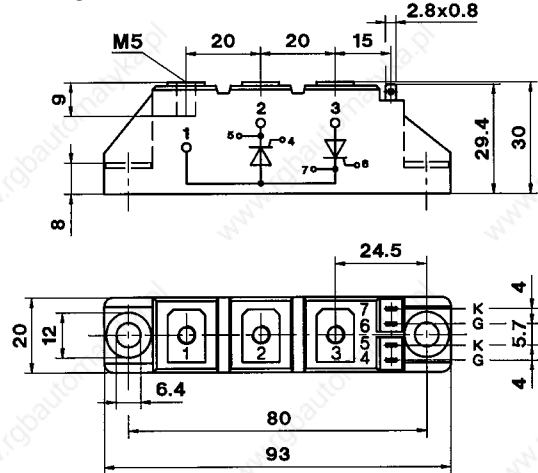
Dimensions in mm

## SKKT 20/ ... 106/

Case A 46

IEC 192-2: A 77 A  
JEDEC: TO-240 AA

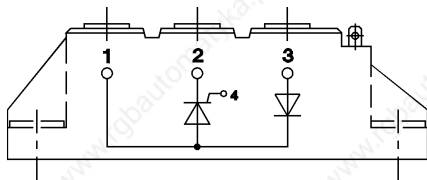
SEMIPACK® 1



Dimensions in mm

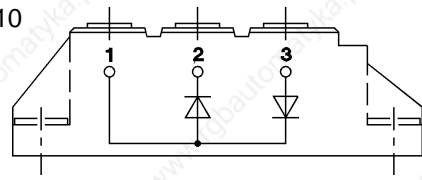
## SKKH 26 ... 105

Case A 6



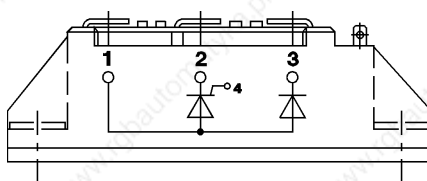
## SKKD 26 ... 100

Case A 10



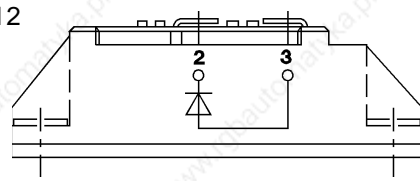
## SKNH 56 ... 91

Case A 7



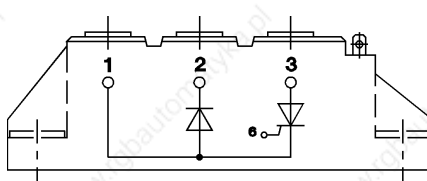
## SKKE 81

Case A 12



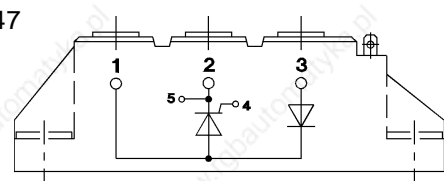
## SKKL 56 ... 105

Case A 9



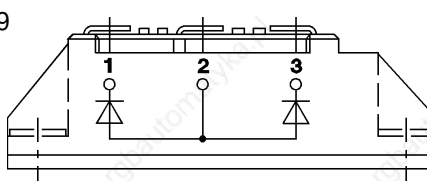
## SKKH 27 ... 106

Case A 47



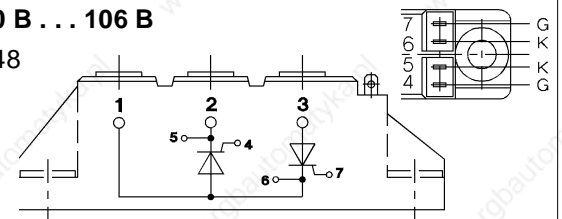
## SKND 46 ... 81

Case A 19



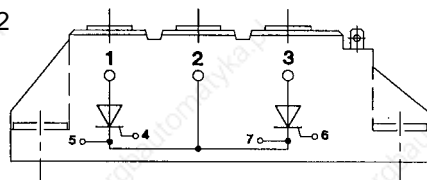
## SKKT 20 B ... 106 B

Case A 48



## SKMT 92

Case A 72



## SKKL 42 ... 106

Case A 59

