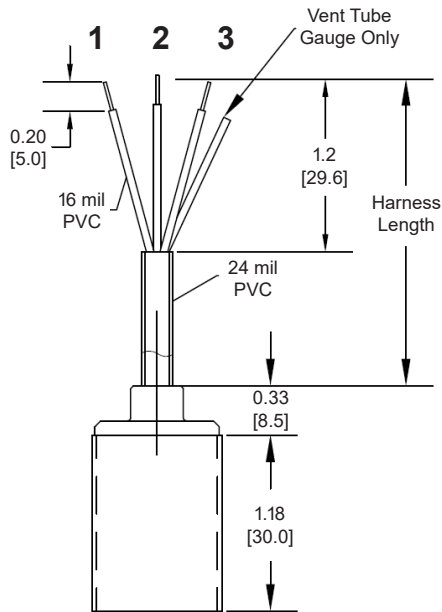
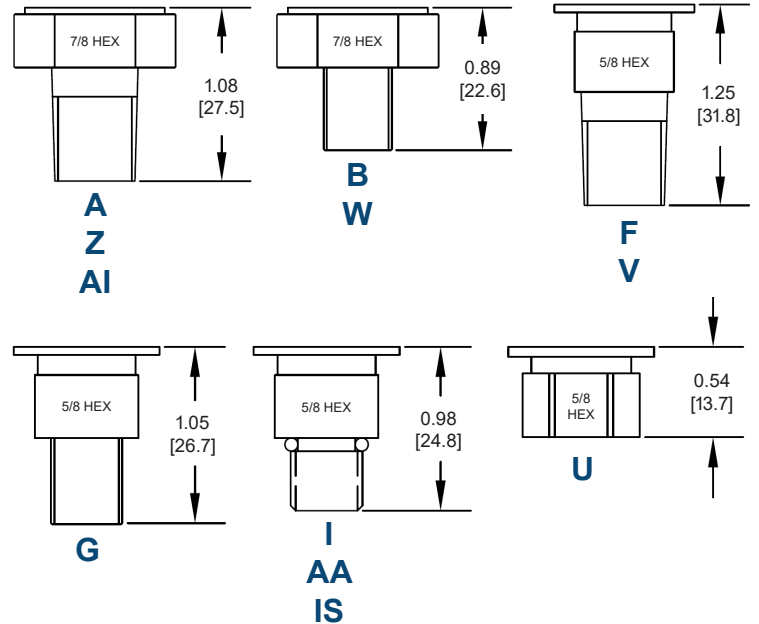


Dimensional Drawings

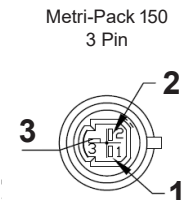
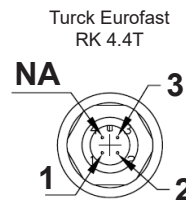
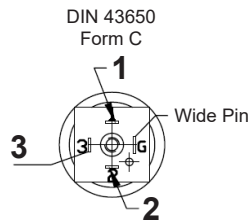
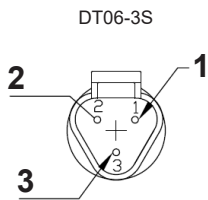
Harness



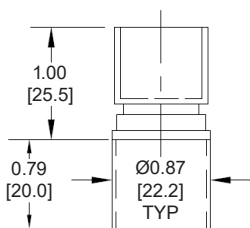
Ports



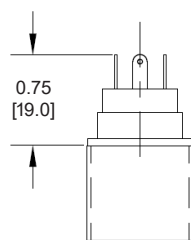
Connectors



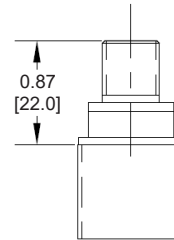
Deutsch



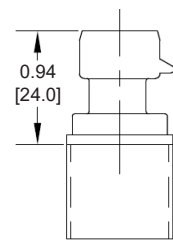
DIN 43650



M12



Packard



Pin	Color	1-5 V	0.5-4.5 V	20 mA
1	Red	V_{in} (8-30)	V_{in} (5+/-0.1)	V_{in} (8-30)
2	Black	GND	GND	NA
3	White	V_{out}	V_{out}	GND
	Tube	Gauge	Gauge	Gauge

Measurement Units		
0.00	=	Inches
[00.0]	=	Millimeters

P51 MediaSensor™ Ordering System

P51 - 50 - A - A - I6 - 4.5 V - 000 - 000

Family —————

Full Scale —————
Pressure (15 - 7,500 PSI)

Pressure Type —————
A = Absolute (15 - 7,500 PSI)
G = Gauge (25 - 300 PSI)
S = Sealed Gauge (15 - 7,500 PSI)

Port Configuration —————

304L	316L	Hex	Port
A, AI	Z	7/8"	1/4 NPT
B	W	7/8"	1/8 NPT
F, V		5/8"	1/4 NPT
G		5/8"	1/8 NPT
I	AA	5/8"	7/16 - 20
U		5/8"	7/16 - 20 (Female)
IS		5/8"	7/16 - 20 (Snubber)

Connector / Harness —————

D = Deutsch

P = Packard

MD = DIN 43650 micro-mini connector with 90° mating connector

M12 = 4 pin micro connector

24 Gauge Harness (Inner PVC: 16 mil)

- **I6** = 6"
- **I12** = 12"
- **I18** = 18"
- **I24** = 24"
- **I36** = 36"
- **I72** = 72"

18 Gauge Harness (Inner PVC: 9 mil)

- **X6** = 6"
- **X12** = 12"
- **X18** = 18"

Output Options —————

4.5 V = 0.5 - 4.5 V (5 V input only)

4.5 OVP = 0.5 - 4.5 V (5 V input only) Includes over voltage protection

5 V = 1 - 5 V (8 to 30 V input only)

20 mA = 4 - 20 mA (8 to 30 V input only)

MOV = Option for 5 V and 20 mA for voltage spike protection

Placeholder

*Other port configurations may be available. Consult factory. MOQ's apply.

*Other harness lengths available - contact factory. MOQ's will apply.

Harness Information

- Stranded Copper: Tinned
- Outer Jacket PVC: 24 mil
- Vent Tube: 1.57 mil Diameter (Gauge Only)