

# Magnetic Contactors and Starters

## SC and SW series

### Optional unit

#### Coil drive units for IC output SZ-CD

This unit is designed to carry out ON-OFF control for contactors with output (24V DC) from the electronic controller. It can be attached to a side or top of a contactor, thus saving on installation space.

#### ■ Features

- This unit operates at, 24V DC.
- Module type allows easy attachment and removal.
- SZ-CD5 and -CD6 can be installed individually and rail mounted.
- Surge suppression function (except SZ-CD5)
- This unit has a built-in surge suppression device (varistor) to protect electronic equipment from surges which occur when the coil is de-energized.



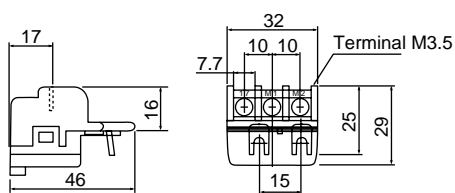
Type		Used with
<b>SZ-CD1</b> <b>SZ-CD3</b> <b>SZ-CD5</b>	With relay output	SC-03 to 5-1 SC-N1 to N3 SC-N4 to N12
<b>SZ-03/CD2-24</b> <b>SZ-CD4</b> <b>SZ-CD6</b>	With SSR output	SC-03 to 5-1 SC-N1 to N3 SC-N4to N12

#### ■ Specifications

Description		<b>SZ-CD1</b>	<b>SZ-CD3, CD5</b>	<b>SZ-03/CD2-24, CD4, CD6</b>
Coil	Rated voltage	24V DC	24V DC	24V DC
	Pick-up voltage (at 20°C)	85% or less of rated voltage	85% or less of rated voltage	70% or less of rated voltage
	Drop-out voltage (at 20°C)	Over 5% of rated voltage	Over 5% of rated voltage	Over 5% of rated voltage
	Max. allowable voltage	130% or less of rated voltage	130% or less of rated voltage	110% or less of rated voltage
	Power consumption	0.2W(8.3mA)	0.2W(8.3mA)	0.36W(15mA)
Contact	Output device	Relay output	Relay output	SSR output
	Max. make/break voltage	250V AC, 110V DC	250V AC	100-240V AC
	Operating time(ms)	2-5	2-5(SZ-CD5: 3-6)	1 or less

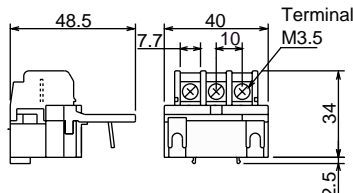
#### ■ Dimensions, mm

##### SZ-CD1,03/CD2-24 (Top mount)



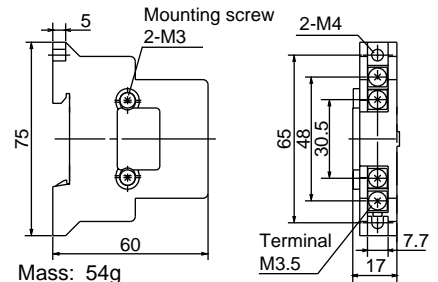
Mass: 26g

##### SZ-CD3,CD4 (Top mount)



Mass: 28g

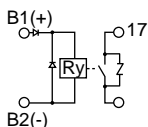
##### SZ-CD5,CD6 (Side mount)



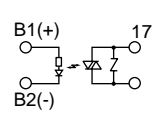
Mass: 54g

#### ■ Wiring diagrams

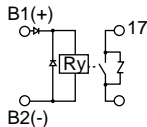
##### SZ-CD1



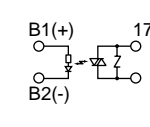
##### SZ-03/CD2-24



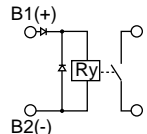
##### SZ-CD3



##### SZ-CD4



##### SZ-CD5



##### SZ-CD6

