

## Three Improvements for an effective Machine Design

### Compact Body

#### All in one Vision Sensor

All-in-one compact size that is perfect for use in tight spaces or as an aftermarket option. Compared to more-advanced Vision Sensors with multiple components, this Sensor boasts a much more efficient hardware design.

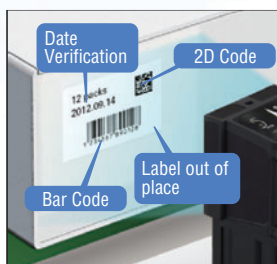


» p.04

### Extended Functions

#### Image Sensor, OCR, and Code Reader in One

The OCR function, with a "build-in" dictionary and the Code Reading, ability to recognize 15 codes types add to the solution and provide a powerful upgrade !



» Image Inspections p.06  
 » OCR p.08  
 » Code Reader p.10

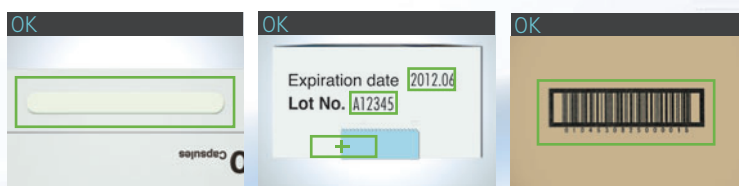
### Diverse Lineup

#### A Lineup That Fits a Wide Range of Equipment

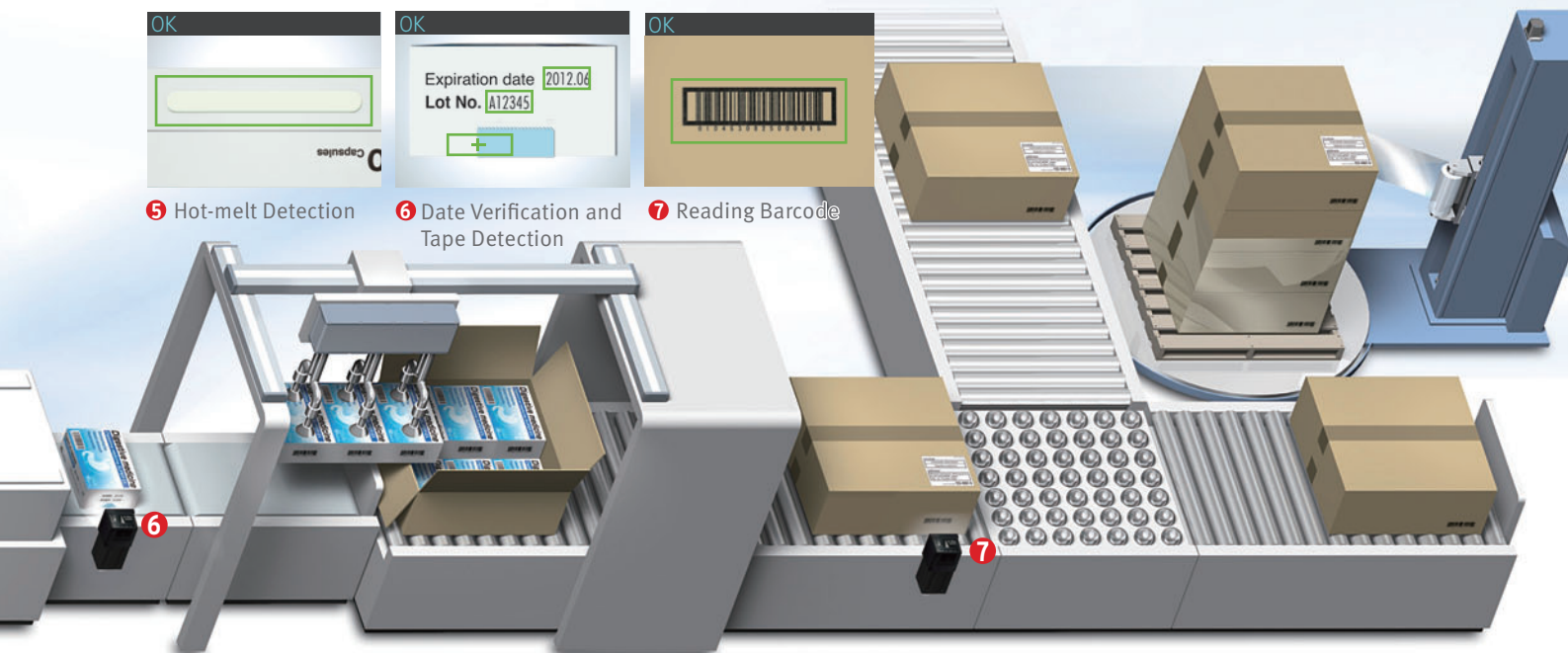
Expanded inspection menu, camera variations, and communication interfaces with the same pricing level as our previous FQ Series. With a wide range of sensors, an option for every application now becomes a standard option.



» p.12



- 5 Hot-melt Detection
- 6 Date Verification and Tape Detection
- 7 Reading Barcode



## Compact

# All You Need is One

## All You Need in One Package

### Image Processor

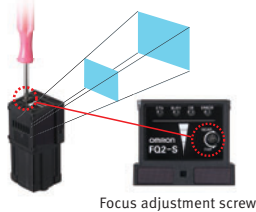
Although previous Vision Sensors placed the image processor in a separate Controller, now we have built the processor into the camera unit.

### High-power Lighting

The Sensor includes high-power lighting capable of evenly lighting across a wide field of view. This provides sufficient lighting even when the enclosed polarizing filter is used.

### Adjustable lens

The focus of the lens can be adjusted to take clear images for the specific field of view and installation distance you need.



### I/O Power Supply Connector

The external output line for inspection results, the input line for changing the setup, and the power supply line are all combined into one connector.

### Ethernet Connector

Commands can be input from a PLC to control the FQ2, and inspection results and measurement results can be output from the FQ2 to a PLC. You can also transfer images to a computer.



### IP67 Water Resistance



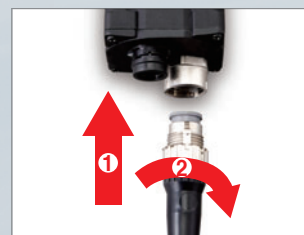
The sensor can be used in wet environments.

### Flexible Cables



All cables from the camera are flexible. This allows the Sensor to be used safely on moving parts.

### Smart Click Connectors



Connection is made quick and easy with a clear, definitive click-into-place mechanism.