

## TECHNICAL DATA

	CMS8	CMS8I
Size	8.5 x 31.5	8.5 x 31.5
Number of poles/phases	1, 1+N, 2, 3, 3+N, 4	1, 1+N, 2, 3, 3+N, 4
Conventional free air thermal current with fuse links $I_{th}$	25 A	25 A
Power dissipation at $I_{th}$	2.5 W	2.5 W
Utilisation category	AC20B/DC20B	AC20B/DC20B
Rated insulation voltage $U_i$	500 V	500 V
Rated impulse withstand voltage $U_{imp}$	6 kV	6 kV
Degree of protection	IP 20	IP 20
Voltage limit for blown fuse indicator	-	230 to 690V AC/DC
Indication System	-	with indicator
Operating temperature	-25°C to 60°C	-25°C to 60°C
Connection	Max. tightening torque: 2.2Nm (19lbs.-in) Rigid wire = 1-16mm <sup>2</sup> (16-6AWG) Multistrand wire = 0.75-10mm <sup>2</sup> (18-8AWG) PZ2 or flat 5.5x1mm screw drivers recommended (max. diameter 6mm)	Max. tightening torque: 2.2Nm (19lbs.-in) Rigid wire = 1-16mm <sup>2</sup> (16-6AWG) Multistrand wire = 0.75-10mm <sup>2</sup> (18-8AWG) PZ2 or flat 5.5x1mm screw drivers recommended (max. diameter 6mm)
Storage temperature	-25°C to 80°C	-25°C to 80°C

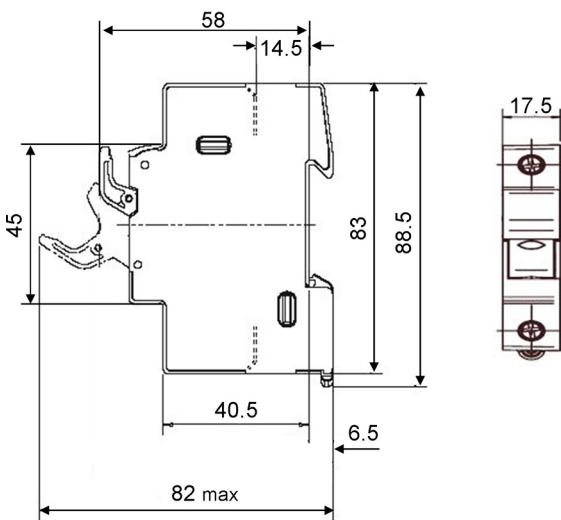
## SPECIFIC USAGE CONDITIONS

Ambient temperature	>20°C	30°C	40°C	50°C	60°C
Derating factor ( $I_e$ )	1	0.95	0.9	0.8	0.7

No of poles (side by side)	1 to 3	>= 4
Derating factor of current ( $I_{th}$ )	1	0.9

## DIMENSIONS

### Modulostar<sup>®</sup> CMS8 fuse-holders for cylindrical fuse-links class 8.5x31.5mm



Dimensions in mm

## ACCESSORIES



CMS810PAK + fuse-holder

### Kit for multi phase connection

Catalog number	Item number	Weight	Description	Weight	Package
CMS810PAK	Z233725	0.5 g	Links for connection of multipole units	0.5 g	12

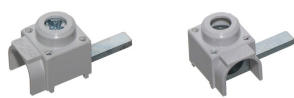


TAGLOCKCMS810

LOCK

### Locking devices

Catalog number	Item number	Weight	Description	Weight	Package
TAGLOCKCMS810	A235773	9 g	Locking kit (Tag and lockout)	9 g	1
LOCK	M223525	0.475 kg	Padlock	475 g	1



TBB1A

TBB1C



TBB23A

TBB23C

### Power supply

Catalog number	Item number	Weight	Description	Application	Weight	Package
TBB1A	D210315	10.1 g	1 phase axial incoming power supply	Max. rms current 90A	10.1 g	50
TBB1C	E210316	10 g	1 phase lateral incoming power supply	Max. rms current 90A	10 g	50
TBB23A	F210317	23.3 g	2 & 3 phases axial incoming power supply	Max. rms current 90A	23.3 g	50
TBB23C	G210318	23.1 g	2 & 3 phases lateral incoming power supply	Max. rms current 90A	23.1 g	50