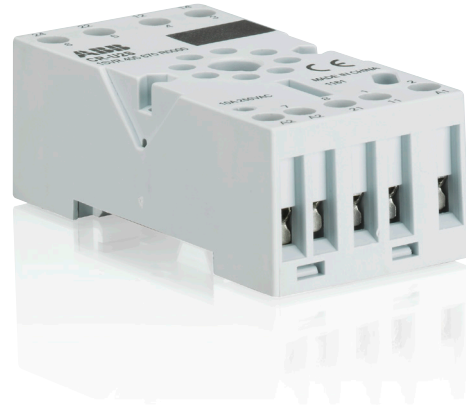


# Accessories for pluggable interface relays CR-U

## Sockets

### Characteristics

- Standard socket for interface relays CR-U
- Snap-on mounting on DIN rail
- Connector for pluggable function modules: reverse polarity protection/free wheeling diode, LED indication, RC element, overvoltage protection, multifunction time module



2CDC 291 007 S0011

### Approvals

 UL 508, CAN/CSA C22.2 No.14

 CSA C22.2 No.14

 EAC

 RMRS

### Marks

 CE

### Order data

Packing unit 10 = pieces.

Type	Version	Order code
------	---------	------------

#### Standard sockets

Position of connecting terminals: coil connection (A1-A2) on lower socket side, contact connections (n/o and n/c contacts) on the lower and upper socket side.

CR-U2S	for 2 c/o (SPDT) contacts + module	1SVR 405 670 R0000
CR-U3S	for 3 c/o (SPDT) contacts + module	1SVR 405 660 R0000
CR-U3E	for 3 c/o (SPDT) contacts	1SVR 405 660 R0100

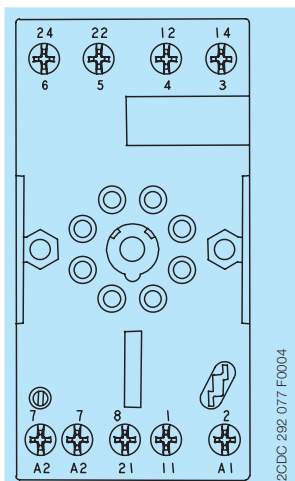
#### Small sockets

CR-U2SM	for 2 c/o (SPDT) contacts	1SVR 405 670 R1100
CR-U3SM	for 3 c/o (SPDT) contacts	1SVR 405 660 R1100

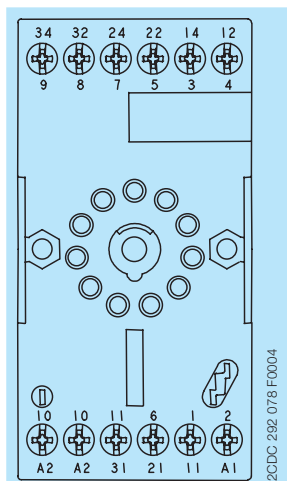
#### Accessories for CR-P sockets

CR-UH	Metall holder	1SVR 405 669 R0000
-------	---------------	--------------------

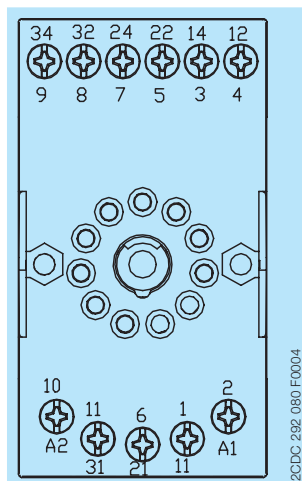
## Electrical connection



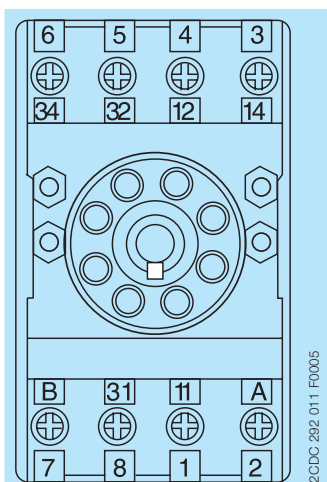
CR-U2S



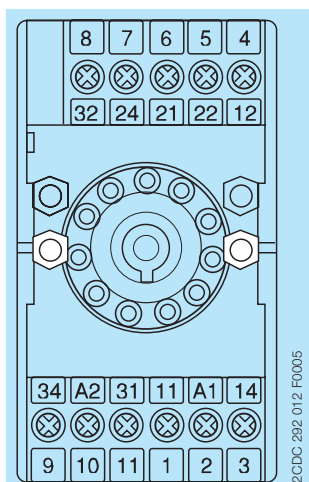
CR-U3S



CR-U3E



CR-U2SM



CR-U3SM

A1-A2	Supply voltage
11-12/14,	Relay outputs
21-22/24,	
31-32/34	
A-B	(only supply voltage CR-U2SM)