

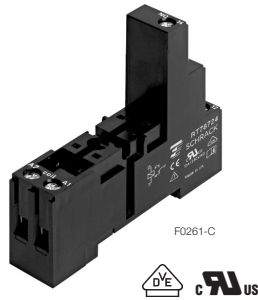
Accessories Industrial Power Relay RT (Continued)

Socket with screw-type terminals for DIN rail mounting

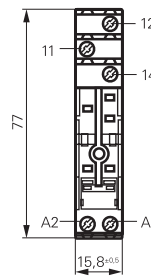
RT 78 724 Socket with screw-type terminals, pinning 3.5 mm for DIN rail mounting

RT 78 726 Socket with screw-type terminals, pinning 5 mm for DIN rail mounting, logical terminal arrangement

- DIN-rail socket with logical setup of connections (input/output)
- High quality rising clamp terminals
- Captive combination terminal screws
- Jumper bars for interconnection

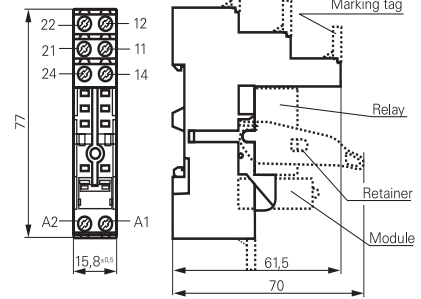


RT 78 724



S0416-CA

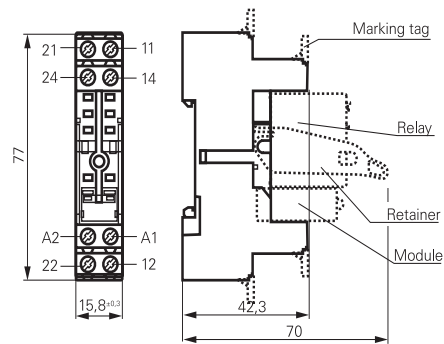
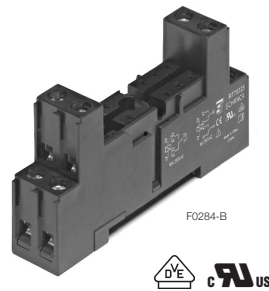
RT 78 726



S0416-CB

RT 78 725 Socket with screw-type terminals, pinning 5 mm for DIN rail mounting, conventional terminal arrangement

- Conventional terminal arrangement



S0540-BT

Approvals

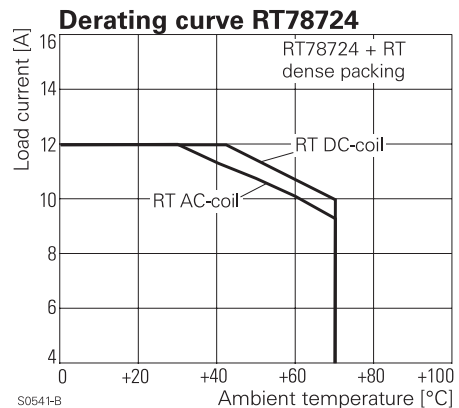
VDE Cert. No. 40007571, cULus E135149

| Technical data | RT78724/RT78726 | RT78725 |
|---|---------------------------------|-----------------------|
| Rated voltage/Max. switching voltage AC | 240/400 VAC | |
| Rated current | 12 A, 2 x 8 A, 16 A*) | |
| Dielectric strength | | |
| coil-contact circuit | 5000 V _{rms} | 4000 V _{rms} |
| open contact circuit | 1000 V _{rms} | 1000 V _{rms} |
| adjacent contact circuits | 2500 V _{rms} | 2500 V _{rms} |
| Clearance / creepage | | |
| coil-contact circuit | ≥ 10/10 mm | ≥ 4.7/4.7 mm |
| Material group of insulation parts | IIIa | |
| Flammability class UL 94 | V-0 | |
| Insulation to IEC 60664-1 | | |
| Type of insulation | coil-contact circuit reinforced | basic |
| open contact circuit | functional | |
| adjacent contact circuits | functional | |
| Rated insulation voltage | 250 V | |
| Pollution degree | 2 | |
| Rated voltage system | 230 / 400 V | |
| Overvoltage category | III | |

Material compliance: EU RoHS/ELV, China RoHS, REACH, Halogen content refer to the Product Compliance Support Center at www.te.com/customer-support/rohssupportcenter

*) For 1 pole relays (16 A) the relay terminals 11-21, 12-22 and 14-24 have to be bridged.
For 1 pole relays (12 A) the relay terminals 11-12-14 have to be connected to the socket terminals 21-12-14.

- Not suitable for bistable relays with 2 coils!



Accessories Industrial Power Relay RT (Continued)

Technical data (continued) RT78724/RT78726 RT78725

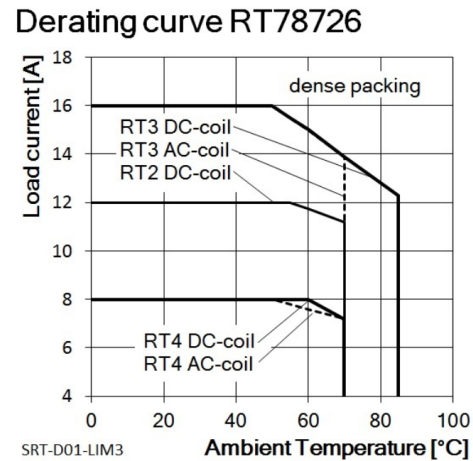
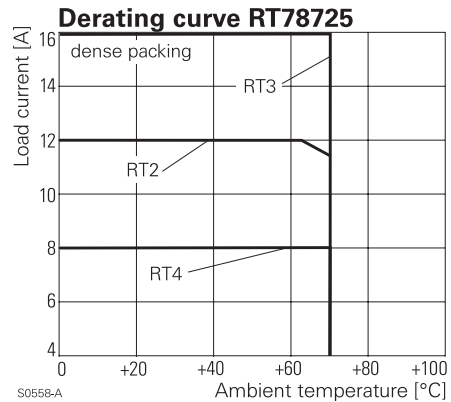
| | |
|---|-------------------------|
| Ambient temperature range for mounting/handling | -20...+70°C |
| in operation | -40...+70°C |
| Terminals | screw |
| Terminals screw torque acc. IEC 61984 | 0.5 Nm |
| max. | 0.7 Nm |
| Terminal Screw size | M3 |
| Wire strip length | 8 mm |
| Wire cross section | |
| single wire | 2 x 2.5 mm ² |
| fine wire | 2 x 2.5 mm ² |
| with bootlace crimp (DIN 46228/1) | 2 x 1.5 mm ² |
| Insertion cycles | A (10) |
| Max. Insertion Force total | 100 N |
| Mounting distance | ≥ 0, dense packing |
| Weight | 36 g |
| Packaging unit | 10 pcs |

Socket with screw-type terminals for DIN rail mounting

| Type | | Part Number |
|------------------|---|-------------|
| RT 78 724 | Socket with screw-type terminals, pinning 3.5 mm for DIN rail mounting, logical terminal arrangement | 8-1415035-1 |
| RT 78 726 | Socket with screw-type terminals, pinning 5 mm for DIN rail mounting, logical terminal arrangement | 6-1415035-1 |
| RT 78 725 | Socket with screw-type terminals, pinning 5 mm for DIN rail mounting, conventional terminal arrangement | 1860306-1 |

Accessories for RT 78 724, RT 78 725, RT 78 726

| Type | | Part Number |
|------------------|--|-------------|
| RT 17 017 | Plastic retaining clip, relay height 15.7 mm | 2022103-1 |
| RT 28 816 | Metal retaining clip, relay height 15.7 mm | 1415540-8 |
| RT 17 040 | Marking tag | 2-1415038-1 |
| RT 17 0R8 | Jumper bar, max load 12 A for connection of up to 8 RT sockets | 1860517-8 |



Marking tags

- White marking area 15.5 x 6 mm
- Snaps on socket in up to 4 positions

