

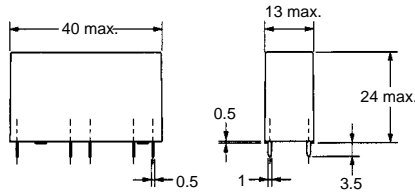
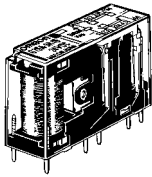
2. These times were measured at the rated voltage and an ambient temperature of 23°C. Contact bounce time is not included.
3. Pole 3 refers to terminals 31–32 or 33–34, pole 4 refers to terminals 43–44, pole 5 refers to terminals 53–54, and pole 6 refers to terminals 63–64.
4. When using a P7SA Socket, the dielectric strength between coil contacts/different poles is 2,500 VAC, 50/60 Hz for 1 min.
5. Min. permissible load is for a switching frequency of 300 operations/min.
6. When operating at a temperature between 70°C and 85°C, reduce the rated carry current (6 A at 70°C or less) by 0.1 A for each degree above 70°C.

Dimensions

Note: All units are in millimeters unless otherwise indicated. The diagrams are drawn in perspective.

■ Safety Relays

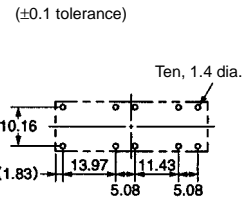
G7SA-3A1B
G7SA-2A2B



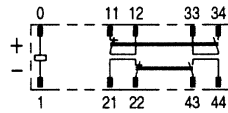
**Terminal Arrangement/
Internal Connection Diagram
(Bottom View)**



**Printed Circuit Board
Design Diagram
(Bottom View)**

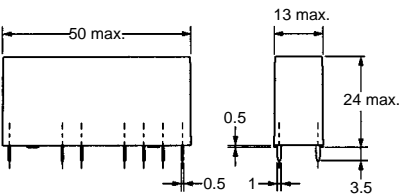
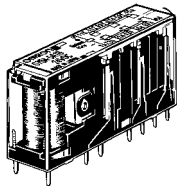


G7SA-2A2B

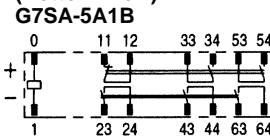


Note: Terminals 23-24, 33-34, and 43-44 are normally open. Terminals 11-12 and 21-22 are normally closed.

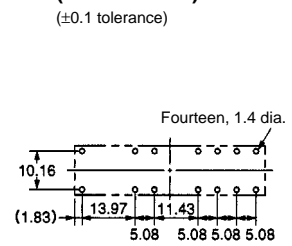
G7SA-5A1B
G7SA-4A2B
G7SA-3A3B



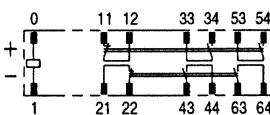
**Terminal Arrangement/
Internal Connection Diagram
(Bottom View)**



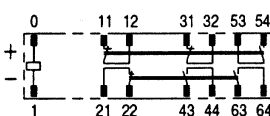
**Printed Circuit Board
Design Diagram
(Bottom View)**



G7SA-4A2B



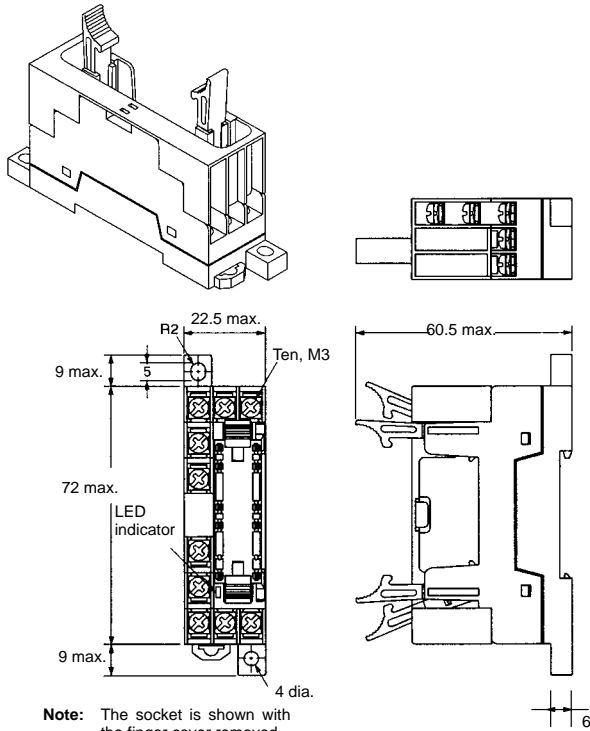
G7SA-3A3B



Note: Terminals 23-24, 33-34, 53-54, and 63-64 are normally open. Terminals 11-12, 21-22, and 31-32 are normally closed.

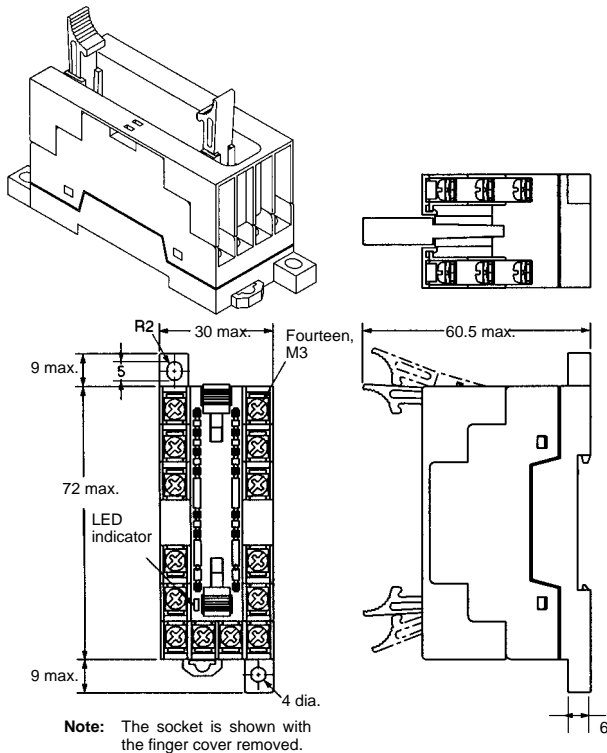
■ Safety Relay Sockets

Track-mounting Socket
P7SA-10F, P7SA-10F-ND



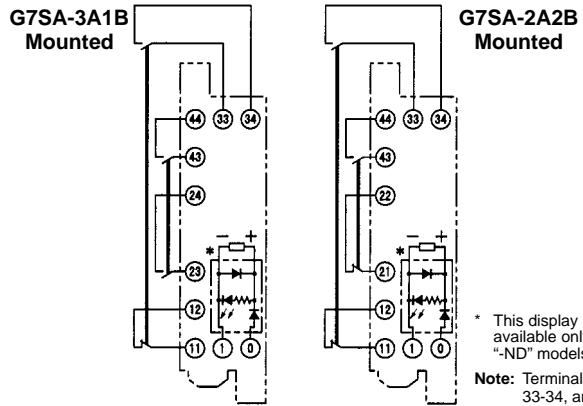
Note: Only the -ND Sockets have LED indicators.

Track-mounting Socket
P7SA-14F, P7SA-14F-ND



Note: Only the -ND Sockets have LED indicators.

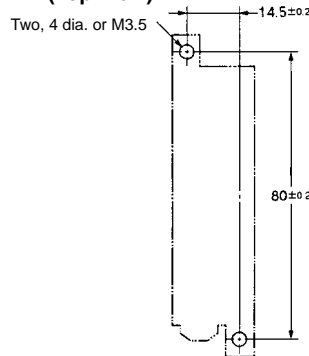
Terminal Installation/Internal Connection Diagram
(Top View)



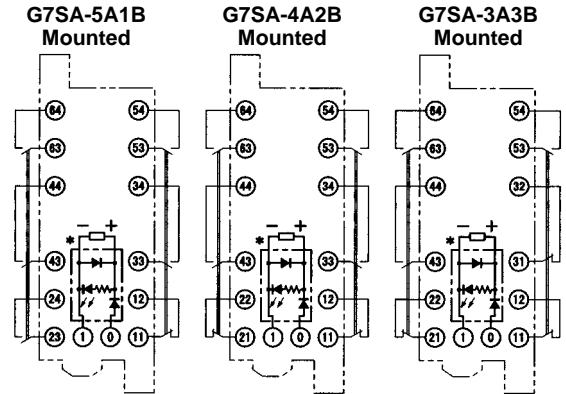
* This display circuit is available only for "-ND" models.

Note: Terminals 23-24, 33-34, and 43-44 are normally open. Terminals 11-12 and 21-22 are normally closed.

Mounting Hole Placement Diagram
(Top View)



Terminal Arrangement/Internal Connection Diagram
(Top View)



* This display circuit is available only for "-ND" models.

Note: Terminals 23-24, 33-34, 43-44, 53-54, and 63-64 are normally open. Terminals 11-12, 21-22, and 31-32 are normally closed.

Mounting Hole Placement Diagram
(Top View)

