

Safety relays - PSR-SCP- 24UC/THC4/2X1/1X2 - 2963721

Technical data

General

| | |
|---|---|
| Relay type | Electromechanical relay with forcibly guided contacts in accordance with EN 50205 |
| Mechanical service life | Approx. 10 ⁷ cycles |
| Nominal operating mode | 100% operating factor |
| Net weight | 193.3 g |
| Mounting type | DIN rail mounting |
| Mounting position | any |
| Degree of protection | IP54 |
| | IP20 |
| Min. degree of protection of inst. location | IP54 |
| Housing color | yellow |

Connection data

| | |
|---------------------------------------|---------------------|
| Connection method | Screw connection |
| pluggable | Yes |
| Conductor cross section solid min. | 0.2 mm ² |
| Conductor cross section solid max. | 2.5 mm ² |
| Conductor cross section flexible min. | 0.2 mm ² |
| Conductor cross section flexible max. | 2.5 mm ² |
| Conductor cross section AWG min. | 24 |
| Conductor cross section AWG max. | 12 |
| Stripping length | 7 mm |
| Screw thread | M3 |

Safety-related characteristic data

| | |
|---|-------------------------|
| Stop category | 0 |
| Designation | IEC 61508 - High demand |
| Safety Integrity Level (SIL) | 3 |
| Designation | IEC 61508 - Low demand |
| Safety Integrity Level (SIL) | 3 |
| Designation | EN ISO 13849 |
| Performance level (PL) | e |
| Category | 4 |
| Designation | EN 62061 |
| Safety Integrity Level Claim Limit (SIL CL) | 3 |

Standards and Regulations

| | |
|--------------------------------|--|
| Shock | 15g |
| Designation | Air clearances and creepage distances between the power circuits |
| Standards/regulations | DIN EN 50178/VDE 0160 |
| Rated insulation voltage | 250 V |
| Rated surge voltage/insulation | 6 kV / Safe isolation, increased insulation |

Safety relays - PSR-SCP- 24UC/THC4/2X1/1X2 - 2963721

Technical data

Standards and Regulations

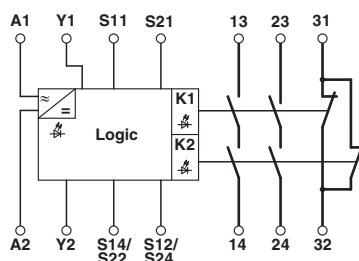
| | |
|-----------------------|----------------------|
| Degree of pollution | 2 |
| Overvoltage category | III |
| Vibration (operation) | 10 Hz ... 150 Hz, 2g |

Environmental Product Compliance

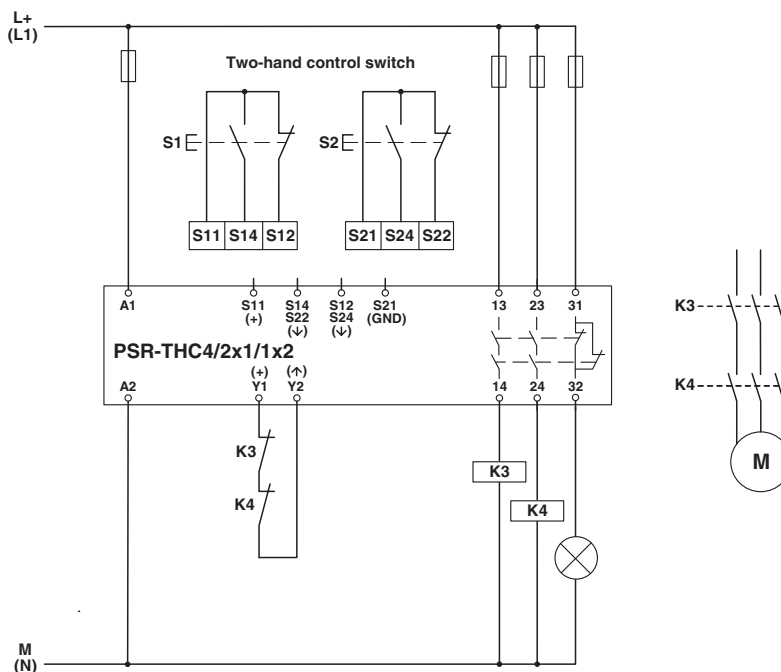
| | |
|------------|---|
| China RoHS | Environmentally Friendly Use Period = 50 |
| | For details about hazardous substances go to tab "Downloads", Category "Manufacturer's declaration" |

Drawings

Circuit diagram



Circuit diagram



Two-hand control device