

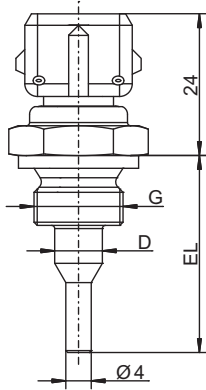
JUMO GmbH & Co. KG
 Delivery address: Mackenrodtstraße 14
 36039 Fulda, Germany
 Postal address: 36035 Fulda, Germany
 Phone: +49 661 6003-0
 Fax: +49 661 6003-607
 Email: mail@jumo.net
 Internet: www.jumo.net

JUMO Instrument Co. Ltd.
 JUMO House
 Temple Bank, Riverway
 Harlow, Essex, CM20 2DY, UK
 Phone: +44 1279 63 55 33
 Fax: +44 1279 62 50 29
 Email: sales@jumo.co.uk
 Internet: www.jumo.co.uk

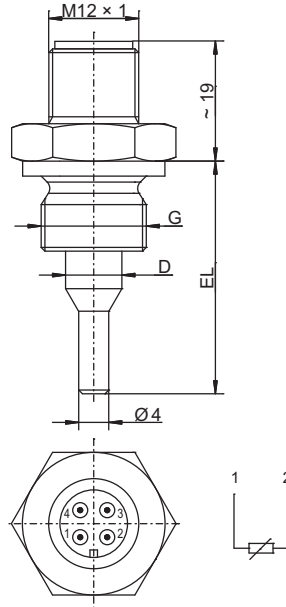
JUMO Process Control, Inc.
 6733 Myers Road
 East Syracuse, NY 13057, USA
 Phone: +1 315 437 5866
 Fax: +1 315 437 5860
 Email: info.us@jumo.net
 Internet: www.jumousa.com



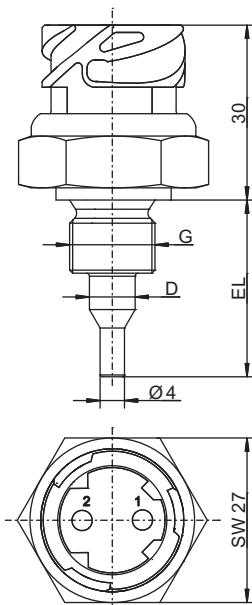
Dimensions



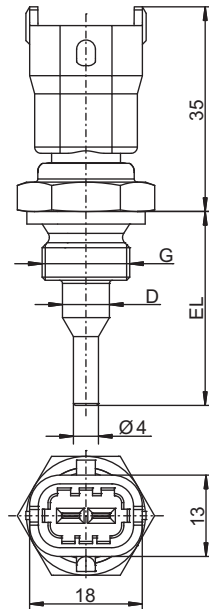
Basic type 902040/10



Basic type 902040/12



Basic type 902040/15



Basic type 902040/17

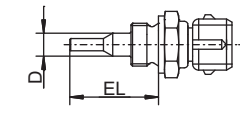
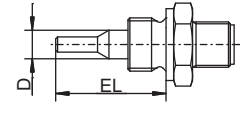
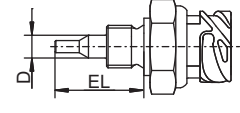
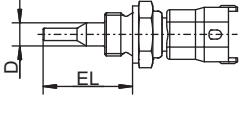
JUMO GmbH & Co. KG
 Delivery address: Mackenrodtstraße 14
 36039 Fulda, Germany
 Postal address: 36035 Fulda, Germany
 Phone: +49 661 6003-0
 Fax: +49 661 6003-607
 Email: mail@jumo.net
 Internet: www.jumo.net

JUMO Instrument Co. Ltd.
 JUMO House
 Temple Bank, Riverway
 Harlow, Essex, CM20 2DY, UK
 Phone: +44 1279 63 55 33
 Fax: +44 1279 62 50 29
 Email: sales@jumo.co.uk
 Internet: www.jumo.co.uk

JUMO Process Control, Inc.
 6733 Myers Road
 East Syracuse, NY 13057, USA
 Phone: +1 315 437 5866
 Fax: +1 315 437 5860
 Email: info.us@jumo.net
 Internet: www.jumousa.com



Order details

				(1) Basic type		
				902040/10	Screw-in RTD temperature probe with AMP plug connector (Junior Power Timer)	
				902040/12	Screw-in RTD temperature probe with machine connector M12 × 1	
				902040/15	Screw-in RTD temperature probe with bayonet connector according to DIN 72585	
				902040/17	Screw-in RTD temperature probe with Bosch compact connector 1.1	
					(2) Operating temperature in °C	
x	x	x	x	370	-50 to +150 °C	
x		x	x	387	-50 to +270 °C (temporarily 300 °C)	
					(3) Measuring insert	
x	x	x	x	1003	1× Pt100 in two-wire circuit	
x	x	x	x	1004	1× Pt500 in two-wire circuit	
x	x	x	x	1005	1× Pt1000 in two-wire circuit	
x	x	x	x	9999	According to customer specification	
					(4) Tolerance class according to DIN EN 60751	
x	x	x	x	0	None	
x	x	x	x	1	Class B	
x	x	x	x	2	Class A	
					(5) Protection tube diameter D in mm	
x	x	x	x	7.5	Ø 7.5 mm stepped down to Ø 4 mm	
					(6) Insertion length EL in mm	
x	x	x	x	29	29 mm	
					(7) Process connection	
x	x	x	x	121	Screw connection M14 × 1.5	
					(8) Protection tube material	
x	x	x	x	20	CrNi (stainless steel)	
x	x	x	x	46	CuZn (brass)	
					(9) Extra codes	
x	x	x	x	000	None	
x	x	x	x	658	SIL and PL compatible with safety temperature limiter and safety temperature monitor 70115X	

Order code	(1)	(2)	(3)	(4)	(5)	(6)	(7)	(8)	(9)
Order example	902040/10	- 387	- 1003	- 1	- 7.5	- 29	- 121	- 20	/ 000