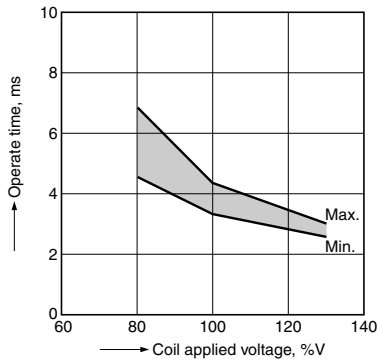


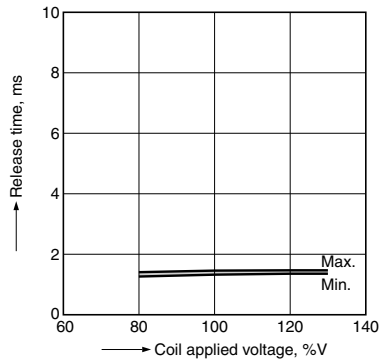
4-(1). Operate time

Sample: ALDP112, 30 pcs.



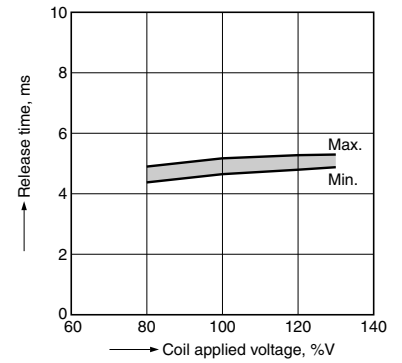
4-(2). Release time (without diode)

Sample: ALDP112, 30 pcs.



4-(3). Release time (with diode)

Sample: ALDP112, 30 pcs.



5. Electrical life test

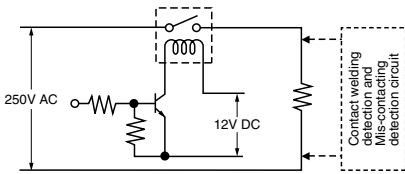
(5A 250V AC Resistive load)

Sample: ALDP112, 6 pcs.

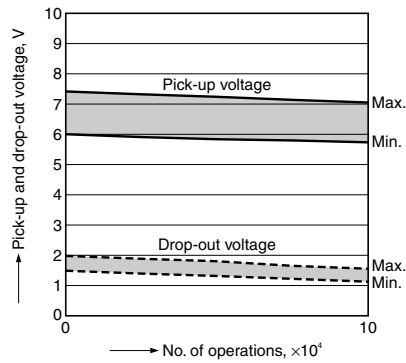
Operation frequency: 20 times/min.

(ON:OFF = 1.5s:1.5s)

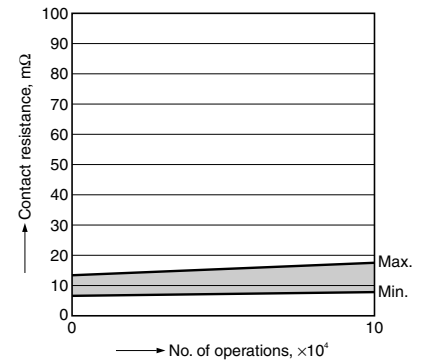
Circuit:



Change of pick-up and drop-out voltage



Change of contact resistance



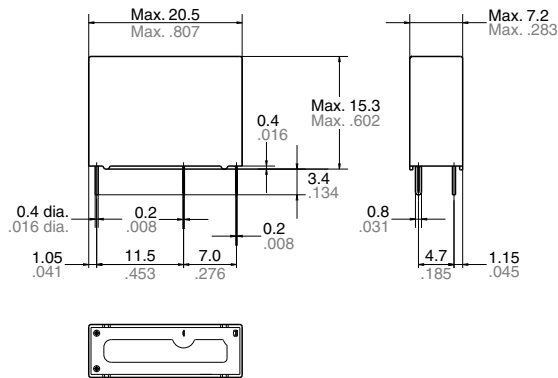
DIMENSIONS (mm inch)

The CAD data of the products with a **CAD** mark can be downloaded from: <http://industrial.panasonic.com/ac/e/>

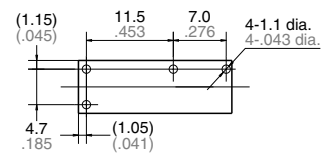
CAD



External dimensions

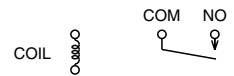


PC board pattern (Bottom view)



Tolerance: $\pm 0.1 \pm .004$

Schematic (Bottom view)



Dimension:

Less than 1mm .039inch:

Min. 1mm .039inch less than 3mm .118 inch: $\pm 0.2 \pm .008$

Min. 3mm .118 inch:

General tolerance

$\pm 0.1 \pm .004$

$\pm 0.2 \pm .008$

$\pm 0.3 \pm .012$

SAFETY STANDARDS

UL/C-UL(Recognized)*1				VDE (Certified)				CQC			
File No.	Load	Temp.	Cycles	File No.	Load	Temp.	Cycles	File No.	Load	Temp.	Cycle
E43028	5A 277V AC Resistive	85°C 185°F	10 ⁵	40014384	5A 250V AC (cosφ=1.0)	85°C 185°F	10 ⁵	CQC10002048611	5A 250V AC	85°C 185°F	10 ⁴
	5A 30V DC Resistive	—	10 ⁵		5A 30V DC (0ms)	25°C 77°F	10 ⁴		—	—	—
	6A 277A AC	—	5 × 10 ⁴		5A 250V AC (cosφ=1.0)*2	105°C 221°F	5 × 10 ⁴		—	—	—
	3A 277V AC General use	85°C 185°F	12 × 10 ⁴		—	—	—		—	—	—
	5A 277V AC Resistive*2	105°C 221°F	5 × 10 ⁴		—	—	—		—	—	—
	Pilot duty, C300	85°C 185°F	10 ⁵		—	—	—		—	—	—
	Pilot duty, 0.65A 277V AC (Inrush 6.5A)	85°C 185°F	10 ⁵		—	—	—		—	—	—

Notes: *1. CSA standard: Certified by C-UL

*2. For Insulation Class F models only (Coil class F)

EN/IEC VDE Certified
INSULATION CHARACTERISTIC (IEC61810-1)

Item	Characteristic	
Clearance/Creepage distance (IEC61810-1)	Min. 5.5mm/5.5mm	
Category of protection (IEC61810-1)	RTIII	
GWT (IEC60335-1)	GWFI850/GWT750 2s (base)/GWIT775 (cover)	
Tracking resistance (IEC60112)	PTI175	
Insulation material group	IIIa	
Over voltage category	III	III
Impulse Withstand Voltage	4 kV	6 kV
Rated voltage	250V	250V
Pollution degree	3	2
Type of insulation (Between contact and coil)	Basic Insulation	Reinforced Insulation
Type of insulation (Between open contact)	Micro Disconnection	

NOTES

1. For cautions for use, please read "GENERAL APPLICATION GUIDELINES".

2. Usage, transport and storage conditions

1) Temperature:

−40 to +85°C −40 to +185°F

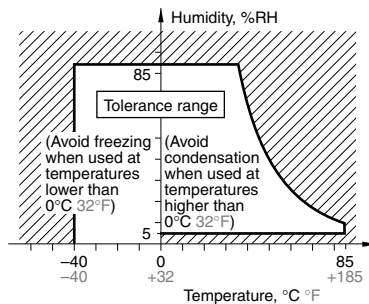
2) Humidity: 5 to 85% RH

(Avoid freezing and condensation.)

The humidity range varies with the temperature. Use within the range indicated in the graph below.

3) Atmospheric pressure: 86 to 106 kPa

Temperature and humidity range for usage, transport, and storage



3. Certification

1) This relay is UL/C-UL certified.

UL/C-UL standards:

5 A 277 V AC 85°C 185°F

5 A 30 V DC

2) This relay is certified by VDE.

VDE standards:

5 A 250 V AC cosφ = 1.0 85°C 185°F

5 A 30 V DC 0ms

3) UL/C-UL and VDE certified ratings are displayed on the packaging box.

(On the relay, only the certification marks are shown and not the certified ratings.

Please refer to the product specification diagrams to see what is stamped.)

4. Part number display

The "W" at the end of the part number only appears on the inner and outer packaging. It does not appear on the relay itself.

5. Creepage distance and clearances between contact and coil: Min. 6 mm .236 inch