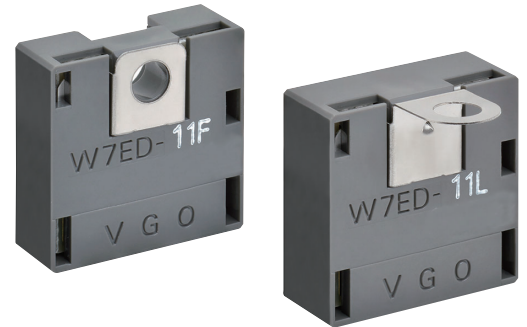


Touch Sensor W7ED

**Reliable operation that requires only a light touch.
Models equipped with anti-static FG terminals
are also available.**

- Suitable for embedding in equipment
- Enables touch sensor configurations to be created that suit your application. Touch electrodes and touch sensor electrodes can be fastened just using screws.
- Body-to-electrode static electricity transfers can easily be prevented using FG terminal models.
- Supports 5 to 15 VDC, with open-collector output.



Refer to *Safety Precautions* on page 6.

Features

No design required

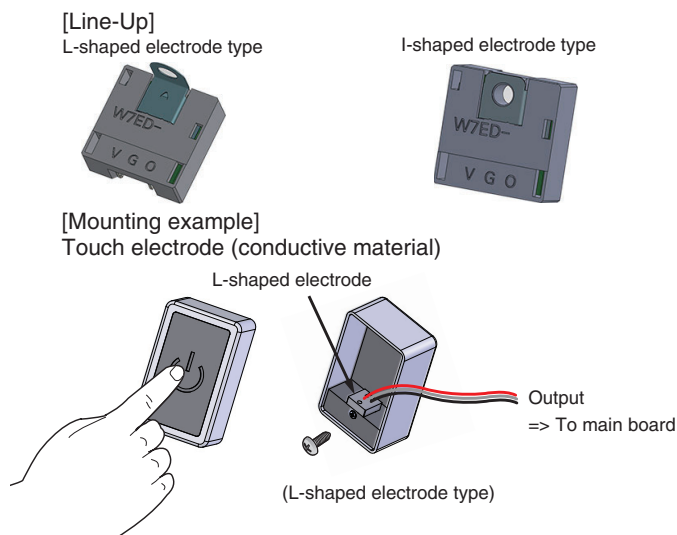
No need to perform sensitivity adjustments or design circuits! Minimizes development man-hours.

Reliable operation

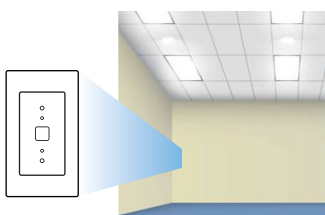
Achieves reliable operation using a touch electrode that changes capacitance depending on the level of touch.

Connects easily

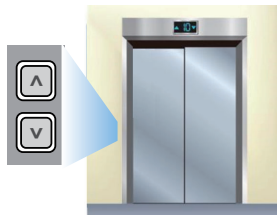
Touch electrodes and touch sensors can be fastened just using screws. No PCBs, facilitating touch sensor configurations.



Application Examples



Lights



Elevators



Vending Machines



Faucets

W7ED

Model Number Legend





W7ED-□ □ □
(1) (2) (3)

(1) Detected capacitance
1: 25 pF

(2) FG terminal
1: Without
2: With

(3) Electrode shape
F: I-shaped
L: L-shaped

Specifications

Electrode shape	Appearance	FG terminal	Model
I-shaped		Without	W7ED-11F
		With	W7ED-12F
L-shaped		Without	W7ED-11L
		With	W7ED-12L