

# Panasonic

ideas for life

Amplifier Built-in  
Compact Photoelectric Sensor

CX-400 SERIES Ver.2



Conforming to  
EMC Directive



UL Recognition



Certified  
(Some models only)

## World Standard



**Upgraded to Increase Usability**

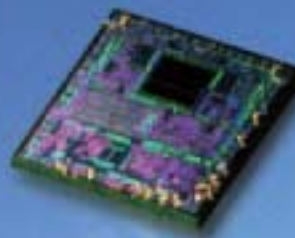
Achieving low power consumption and high noise-resistance

# The world standard CX-400 series Sensors that are environmentally and user friendly.

The total lineup of 148 models covers through the inclusion of a newly developed custom integrated circuit. This **CX-400** series upgrade achieves a significantly higher reliability in the same package as the older model.



Providing stable detection with low power consumption  
**Includes an analog CMOS  
processor ASIC**



## Strong

**Demonstrating stable detection,  
even in harsh environments**



The **CX-400** series incorporates an acrylic that strongly resists oils and coolant fluids, and a polycarbonate indicator cover that strongly resists ethanol. The **CX-400** series is also characterized by strong resistance to noise, reciprocal interference and cold environments.

### Resistant to oil and coolant liquids CX-41□/42□/49□

The lens material is made of a strong acrylic that resists the harmful effects of coolants. These sensors can be used with confidence even around metal processing machine that disperse oil mists.

Test Oil	JIS Standard	Product Name
Lubricant	-	Velocity Oil No. 3
Water-insoluble cutting oil	2-5	Daphnecut AS-30D
	2-11	Yushiron Oil No.2ac (Note)
Water-soluble cutting oil	W1-1	Yushiron Lubic HWC68 (Note)
	W2-1	Yushiroken S50N (Note)

1,000 hours; Immersion (depth 0 m); Insulation resistance 20 MΩ/250 V  
Note: Yushiron and Yushiroken are registered trademarks of Yushiro Chemical Industry Co., Ltd.

### Strongly ethanol resistant CX-44□/48□

Incorporates a polycarbonate indicator cover that strongly resists ethanol. This makes it compatible with food processors that spray ethanol-based cleaning fluids.

