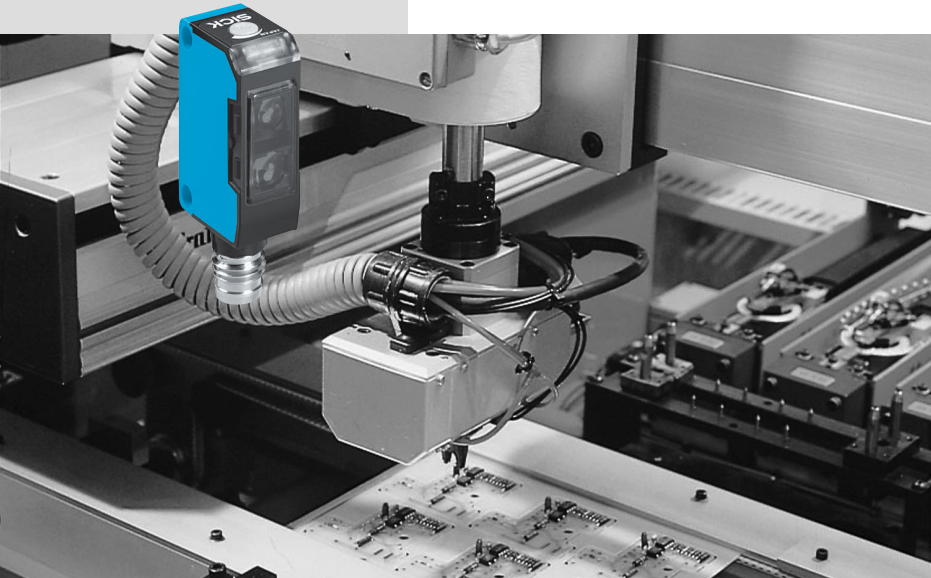


W150: Miniature photoelectric switch series with completely integrated electronics

	Photoelectric proximity switch BGS
	Photoelectric proximity switch energ.
	Photoelectric reflex switch



	Through-beam photoelectric switch
--	-----------------------------------

The W150 photoelectric switches provide the system data and features of standard photoelectric switches without restrictions. The high scanning ranges are a special focal point. W150 devices are always the right choice when little space is available for equipment mounting.

Consequently, they are especially successful in the typical application fields:

- Electronic components and printed circuit production,
- Packaging and graphic arts industries,
- Assembly and handling technologies,
- Special mechanical engineering tasks.

The W150 optics systems and their ranges:

- WS/WE150 through-beam photoelectric switch: 4.4 m, slotted masks as accessory.
- WL150 photoelectric reflex switch: 2.4 m (PL80A), with polarizing filter.
- WL150 photoelectric reflex switch with increased sensitivity: 0.7 m, especially for detecting transparent objects such as glass and film.
- WT150 photoelectric proximity switch, energetic: scanning distance = 250 mm (90% reflectance), for standard scanning jobs. With background suppression: scanning distance = 100 mm, adjustable; for reliable operation even with otherwise interfering background influences.

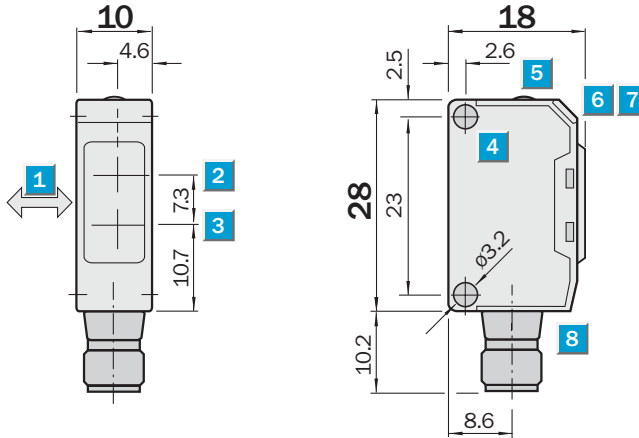
All electrical and mechanical values fulfill the standard for adjustable potentiometers, IP 67, $V_S = 10 \dots 30$ V DC, PNP or NPN switching output, M8 plug or cable. The visible red light of the transmission LED simplifies handling additionally.

Scanning distance
2 ... 100 mm

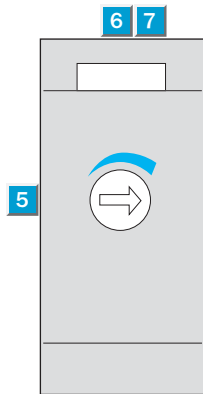
Photoelectric proximity switch

- With background suppression (BGS), consequently reliable detection of dark objects in front of a light background
- Switching point largely independent of object colour and surface
- Scanning distance can be adjusted stepless, scanning distance adjustment (5 revolutions)

Dimensional drawing



Adjustments possible

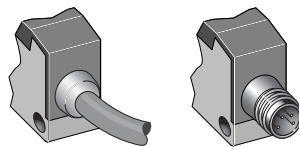


- 1 Standard direction of the material to be scanned
- 2 Optics centre, receiver
- 3 Optics centre, transmitter
- 4 Mounting hole \varnothing 3.2 mm
- 5 Scanning distance adjustment (5 turns)
- 6 LED indicator green: stability indicator
- 7 LED indicator orange: output active
- 8 Connector

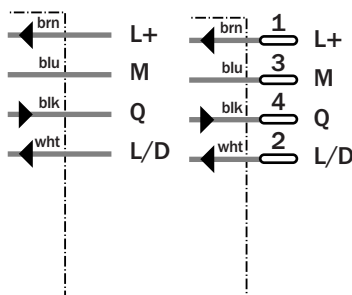


Connection type

WT150-N162	WT150-N460
WT150-P162	WT150-P460



4 x 0.18 mm² M8, 4-pin



Accessories

Connector, M8, 4-pin

Mounting systems