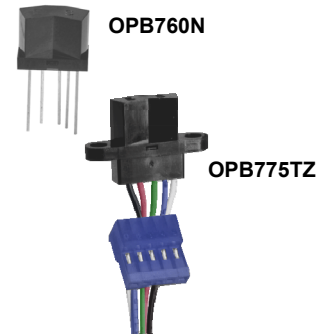


Photologic® Reflective Object Sensor



OPB760, OPB761, OPB762, OPB763 (Series N and T)
 OPB770, OPB771, OPB772, OPB773 (Series NZ and TZ)



Features:

- Choice of mounting configurations
- Choice of four output configurations
- .040" (10.160 mm) PCBoard mount (N and T series)
- 12" (304.800 mm) AWG 26 wires (NZ and TZ series)

Description:

The **OPB760N**, **OPB760T**, **OPB770N** and **OPB770T** series of reflective assemblies feature Photologic® output. The electrical output can be specified as either TTL Totem-Pole or TTL Open-Collector, either of which can be supplied with inverter or buffer output polarity.

OPB760N and **OPB760T** series devices are designed for PCBoard mounting and have 0.04" (10 mm) long leads.

OPB760T and **OPB770T** series devices are designed for remote mounting with two mounting tabs.

OPB770NZ and **OPB770TZ** series devices have 12" (305 mm) long, UL approved 26 AWG wires.

All devices in this series offer the added stability of a built-in hysteresis amplifier.

Custom electrical, wire and cabling and connectors are available. Contact your local representative or OPTEK for more information.

Applications:

- Non-contact Photologic® reflective object sensor
- Assembly line automation
- Machine automation
- Machine safety
- End of travel sensor
- Door sensor

Ordering Information				
Part Number	LED Peak Wavelength	Sensor Photologic®	Reflection Distance (Inch) Min / Max	Mounting
OPB760N	890 nm	Totem-Pole	0.080" / 0.220"	PCBoard .40" (10.160 mm) leads)
OPB761N		Open Collector		
OPB762N		Inv-Totem-Pole		
OPB763N		Inv-Open Collector		
OPB760T		Totem-Pole		
OPB761T		Open Collector		
OPB762T		Inv-Totem-Pole		
OPB763T		Inv-Open Collector		
OPB770NZ		Totem-Pole		12" (304.800 mm) 26 AWG wire
OPB771NZ		Open Collector		
OPB772NZ		Inv-Totem-Pole		
OPB773NZ		Inv-Open Collector		
OPB770TZ		Totem-Pole		
OPB771TZ		Open Collector		
OPB772TZ		Inv-Totem-Pole		
OPB773TZ		Inv-Open Collector		



RoHS

General Note
 TT Electronics reserves the right to make changes in product specification without notice or liability. All information is subject to TT Electronics' own data and is considered accurate at time of going to print.

OPTEK Technology, Inc.
 1645 Wallace Drive, Carrollton, TX 75006 | Ph: +1 972 323 2200
 www.optekinc.com | www.ttelectronics.com

Photologic® Reflective Object Sensor

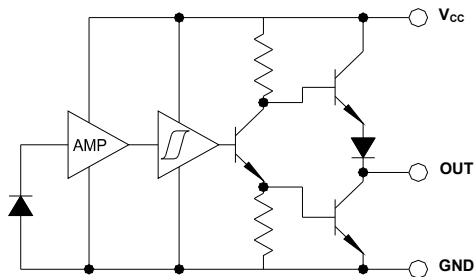


OPB760, OPB761, OPB762, OPB763 (Series N and T)

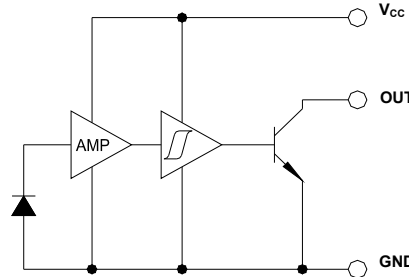
OPB770, OPB771, OPB772, OPB773 (Series NZ and TZ)

Electrical Specifications

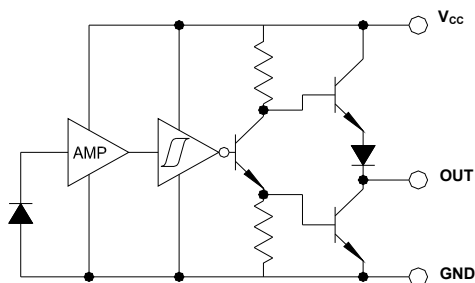
OPB760, OPB770 Buffered Totem-Pole



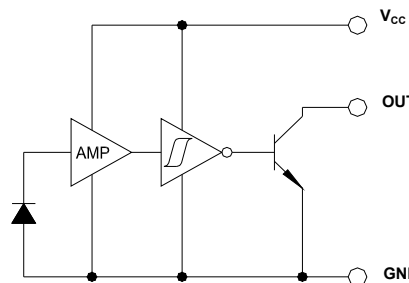
OPB761, OPB771 Buffered Open Collector



OPB762, OPB772 Inverted Totem-Pole



OPB763, OPB773 Inverted Open-Collector



General Note
TT Electronics reserves the right to make changes in product specification without notice or liability. All information is subject to TT Electronics' own data and is considered accurate at time of going to print.

OPTEK Technology, Inc.
1645 Wallace Drive, Carrollton, TX 75006 | Ph: +1 972 323 2200
www.optekinc.com | www.ttelectronics.com