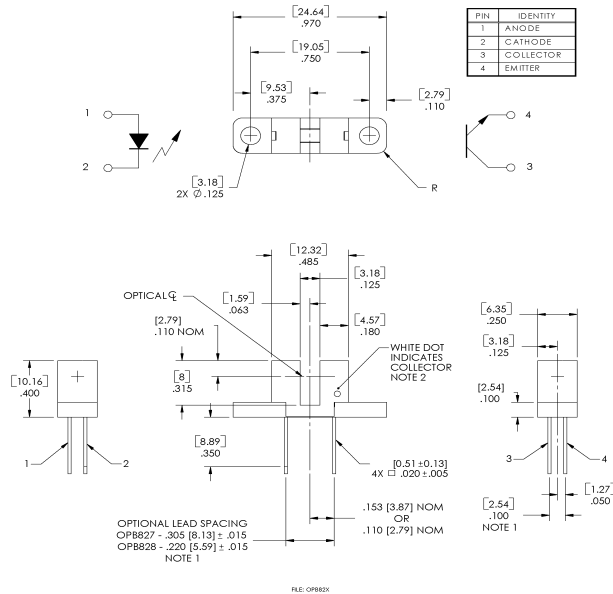


Slotted Optical Switch

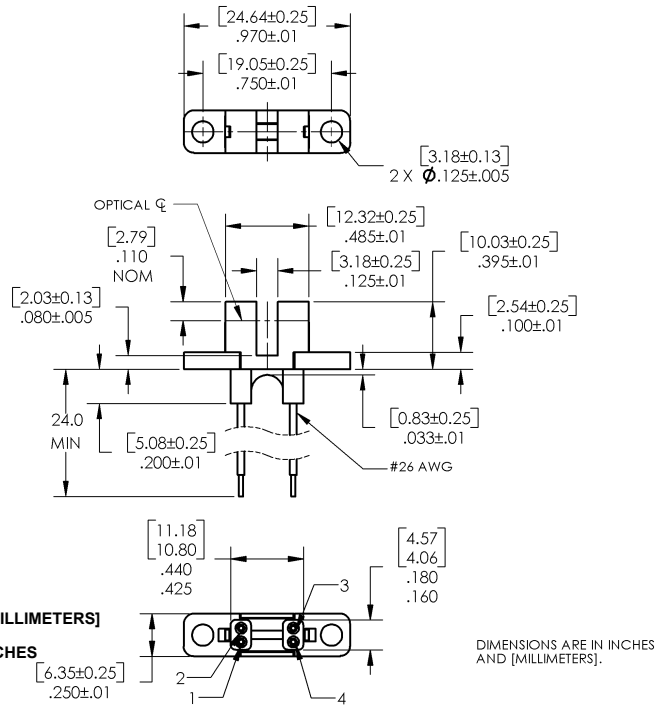
OPB827, OPB828, OPB829Z Series



OPB827 and OPB828 Series

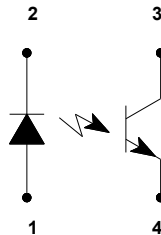


OPB829Z Series



DIMENSIONS ARE IN:
[MILLIMETERS]
INCHES

DIMENSIONS ARE IN INCHES
AND [MILLIMETERS].



Color/Pin #	Description	Color/Pin #	Description
Black-2	Cathode	White-3	Collector
Red-1	Anode	Green-4	Emitter
Lead Spacing			
OPB827 = 0.305"	OPB828 = 0.220"	OPB829 = 24" 26 AWG Wires	

General Note

TT Electronics reserves the right to make changes in product specification without notice or liability. All information is subject to TT Electronics' own data and is considered accurate at time of going to print.

TT Electronics | Optek Technology, Inc.
1645 Wallace Drive, Ste. 130, Carrollton, TX USA 75006 | Ph: +1 972 323 2200
www.ttelectronics.com | sensors@ttelectronics.com

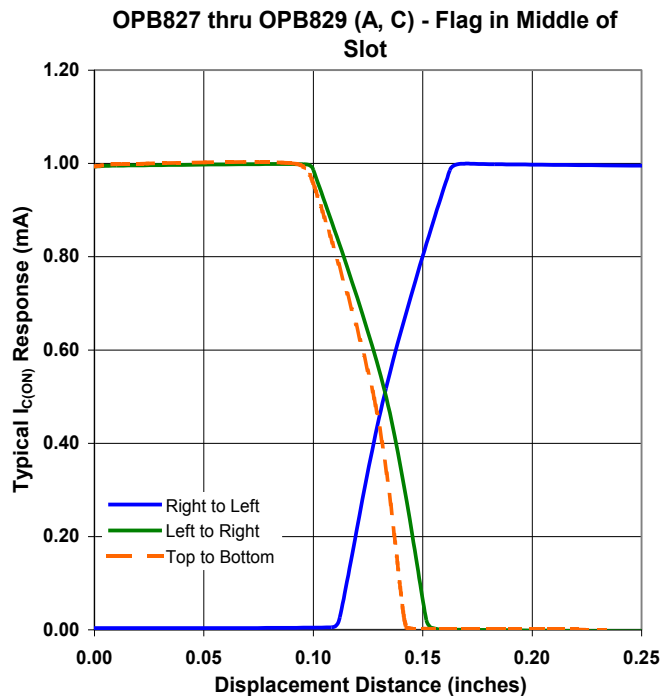
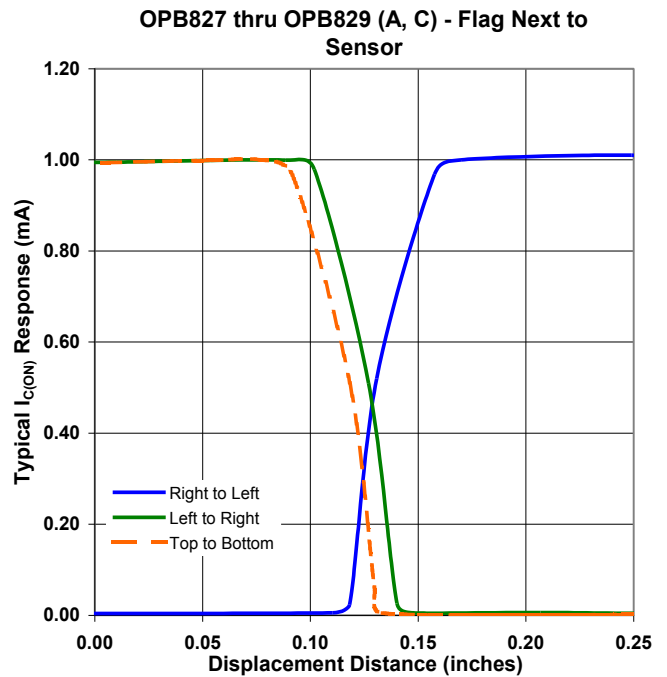
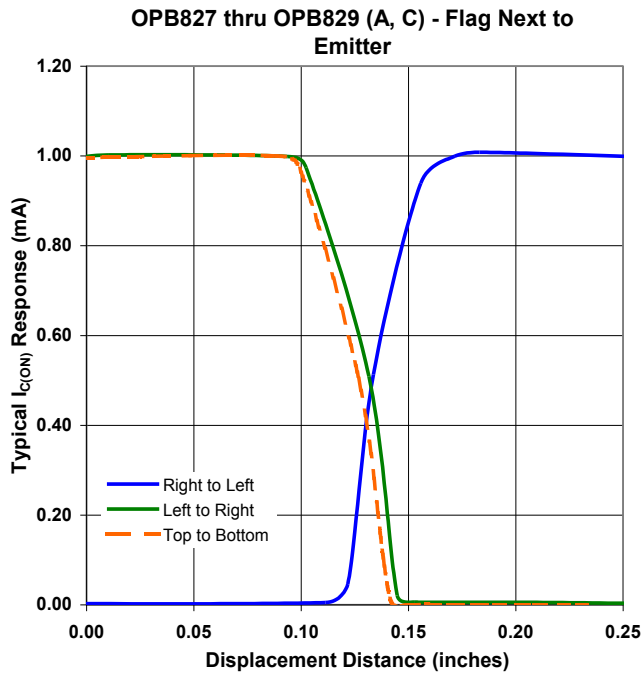
Slotted Optical Switch

OPB827, OPB828, OPB829Z Series



Performance

OPB827, OPB828, OPB829 Series - Devices A and C



General Note

TT Electronics reserves the right to make changes in product specification without notice or liability. All information is subject to TT Electronics' own data and is considered accurate at time of going to print.

TT Electronics | Optek Technology, Inc.
1645 Wallace Drive, Ste. 130, Carrollton, TX USA 75006 | Ph: +1 972 323 2200
www.ttelectronics.com | sensors@ttelectronics.com