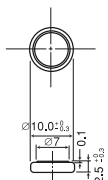
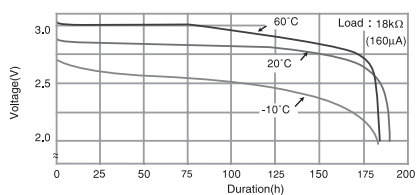


CR-1025

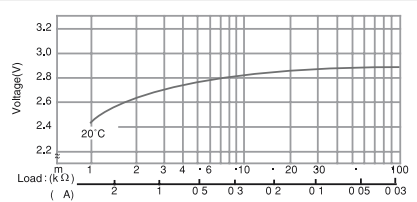


| SPECIFICATIONS | |
|----------------------------|------------|
| Name | CR-1025 |
| Nominal voltage (V) | 3 |
| Nominal capacity (mAh) | 30 |
| Continuous drain (mA) | 0.1 |
| Operating temperature (°C) | -30 to +60 |
| Weight (g) | 0.7 |

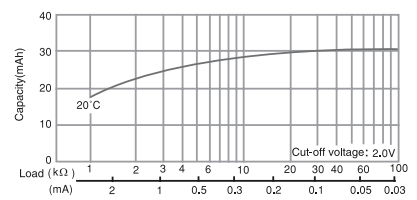
DISCHARGE TEMPERATURE CHARACTERISTICS



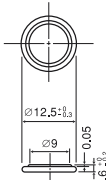
OPERATING VOLTAGE VS. DISCHARGE CURRENT*



CAPACITY VS. LOAD RESISTANCE

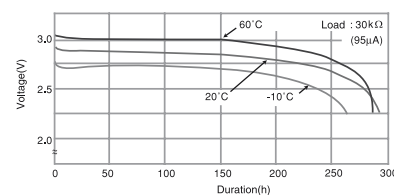


CR-1216

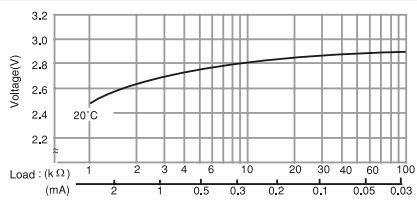


| SPECIFICATIONS | |
|----------------------------|------------|
| Name | CR-1216 |
| Nominal voltage (V) | 3 |
| Nominal capacity (mAh) | 25 |
| Continuous drain (mA) | 0.1 |
| Operating temperature (°C) | -30 to +60 |
| Weight (g) | 0.7 |

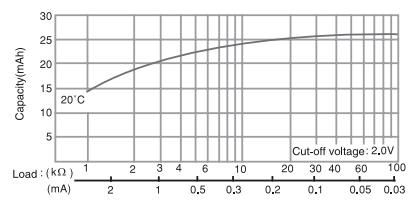
DISCHARGE TEMPERATURE CHARACTERISTICS



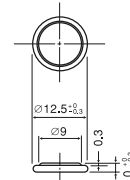
OPERATING VOLTAGE VS. DISCHARGE CURRENT*



CAPACITY VS. LOAD RESISTANCE

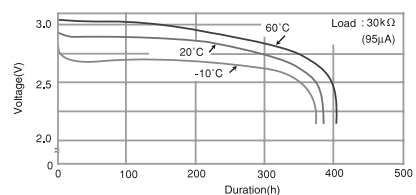


CR-1220

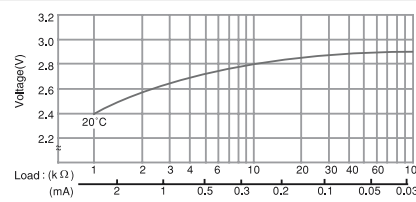


| SPECIFICATIONS | |
|----------------------------|------------|
| Name | CR-1220 |
| Nominal voltage (V) | 3 |
| Nominal capacity (mAh) | 35 |
| Continuous drain (mA) | 0.1 |
| Operating temperature (°C) | -30 to +60 |
| Weight (g) | 1.2 |

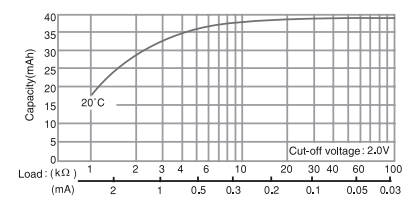
DISCHARGE TEMPERATURE CHARACTERISTICS



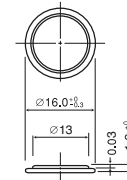
OPERATING VOLTAGE VS. DISCHARGE CURRENT*



CAPACITY VS. LOAD RESISTANCE

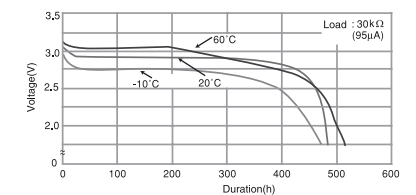


CR-1612

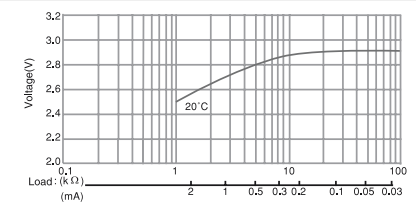


| SPECIFICATIONS | |
|----------------------------|------------|
| Name | CR-1612 |
| Nominal voltage (V) | 3 |
| Nominal capacity (mAh) | 40 |
| Continuous drain (mA) | 0.1 |
| Operating temperature (°C) | -30 to +60 |
| Weight (g) | 0.8 |

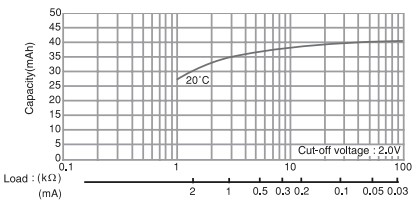
DISCHARGE TEMPERATURE CHARACTERISTICS



OPERATING VOLTAGE VS. DISCHARGE CURRENT*



CAPACITY VS. LOAD RESISTANCE



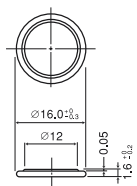
The data in this document are for descriptive purposes only and are not intended to make or imply any guarantee or warranty.
* Voltage at 50% discharge depth.

The data in this document are for descriptive purposes only and are not intended to make or imply any guarantee or warranty.
* Voltage at 50% discharge depth.

MANGANESE DIOXIDE LITHIUM BATTERIES (CR SERIES)

MANGANESE DIOXIDE LITHIUM BATTERIES (CR SERIES)

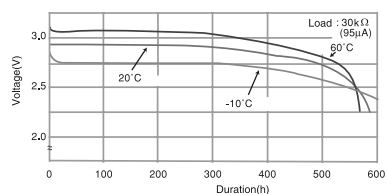
CR-1616



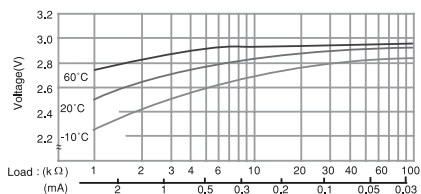
SPECIFICATIONS

| Name | CR-1616 |
|----------------------------|------------|
| Nominal voltage (V) | 3 |
| Nominal capacity (mAh) | 55 |
| Continuous drain (mA) | 0.1 |
| Operating temperature (°C) | -30 to +60 |
| Weight (g) | 1.2 |

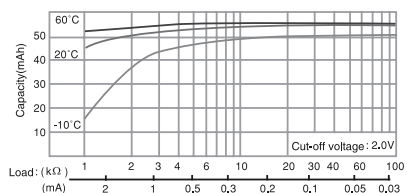
DISCHARGE TEMPERATURE CHARACTERISTICS



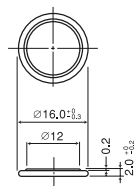
OPERATING VOLTAGE VS. DISCHARGE CURRENT*



CAPACITY VS. LOAD RESISTANCE



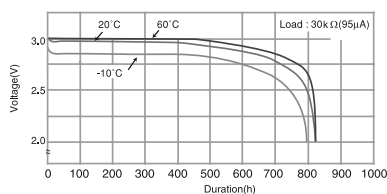
CR-1620



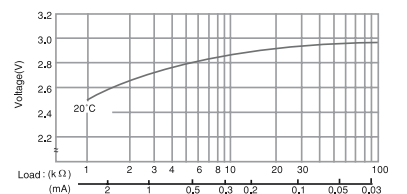
SPECIFICATIONS

| Name | CR-1620 |
|----------------------------|------------|
| Nominal voltage (V) | 3 |
| Nominal capacity (mAh) | 75 |
| Continuous drain (mA) | 0.1 |
| Operating temperature (°C) | -30 to +60 |
| Weight (g) | 1.3 |

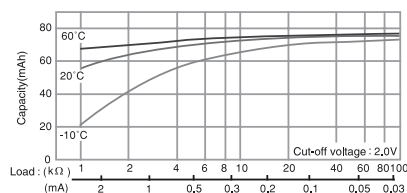
DISCHARGE TEMPERATURE CHARACTERISTICS



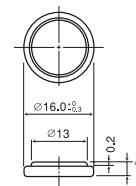
OPERATING VOLTAGE VS. DISCHARGE CURRENT*



CAPACITY VS. LOAD RESISTANCE



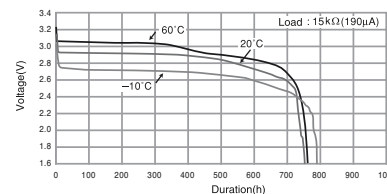
CR-1632



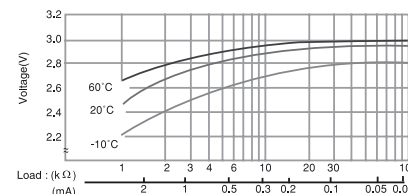
SPECIFICATIONS

| Name | CR-1632 |
|----------------------------|------------|
| Nominal voltage (V) | 3 |
| Nominal capacity (mAh) | 140 |
| Continuous drain (mA) | 0.1 |
| Operating temperature (°C) | -30 to +60 |
| Weight (g) | 1.8 |

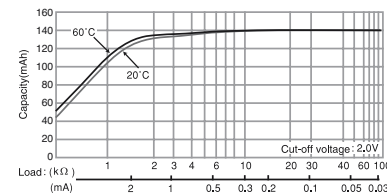
DISCHARGE TEMPERATURE CHARACTERISTICS



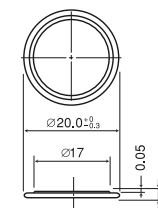
OPERATING VOLTAGE VS. DISCHARGE CURRENT*



CAPACITY VS. LOAD RESISTANCE



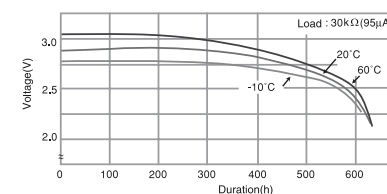
CR-2012



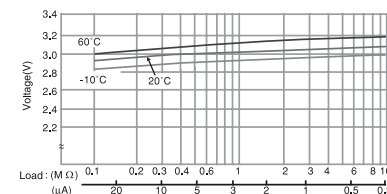
SPECIFICATIONS

| Name | CR-2012 |
|----------------------------|------------|
| Nominal voltage (V) | 3 |
| Nominal capacity (mAh) | 55 |
| Continuous drain (mA) | 0.1 |
| Operating temperature (°C) | -30 to +60 |
| Weight (g) | 1.4 |

DISCHARGE TEMPERATURE CHARACTERISTICS



OPERATING VOLTAGE VS. DISCHARGE CURRENT*



CAPACITY VS. LOAD RESISTANCE

