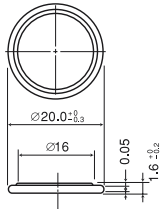


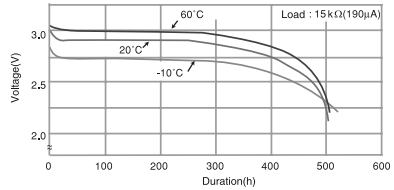
## MANGANESE DIOXIDE LITHIUM BATTERIES (CR SERIES)

### CR-2016

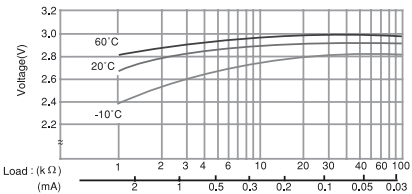


SPECIFICATIONS	
Name	CR-2016
Nominal voltage (V)	3
Nominal capacity (mAh)	90
Continuous drain (mA)	0.1
Operating temperature (°C)	-30 to +60
Weight (g)	1.6

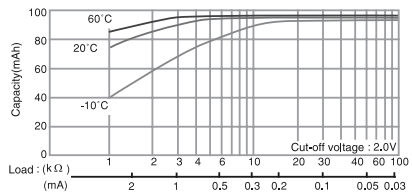
#### DISCHARGE TEMPERATURE CHARACTERISTICS



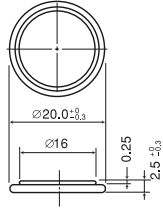
#### OPERATING VOLTAGE VS. DISCHARGE CURRENT\*



#### CAPACITY VS. LOAD RESISTANCE

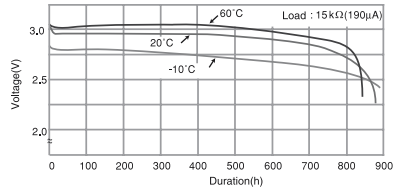


### CR-2025

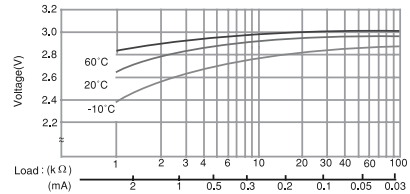


SPECIFICATIONS	
Name	CR-2025
Nominal voltage (V)	3
Nominal capacity (mAh)	165
Continuous drain (mA)	0.2
Operating temperature (°C)	-30 to +60
Weight (g)	2.3

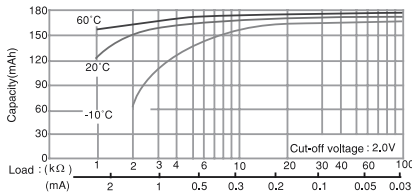
#### DISCHARGE TEMPERATURE CHARACTERISTICS



#### OPERATING VOLTAGE VS. DISCHARGE CURRENT\*

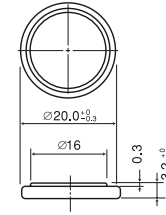


#### CAPACITY VS. LOAD RESISTANCE



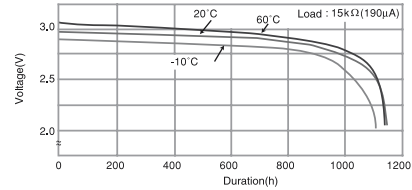
## MANGANESE DIOXIDE LITHIUM BATTERIES (CR SERIES)

### CR-2032

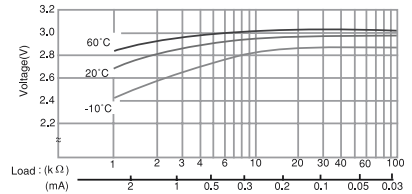


SPECIFICATIONS	
Name	CR-2032
Nominal voltage (V)	3
Nominal capacity (mAh)	220
Continuous drain (mA)	0.2
Operating temperature (°C)	-30 to +60
Weight (g)	2.9

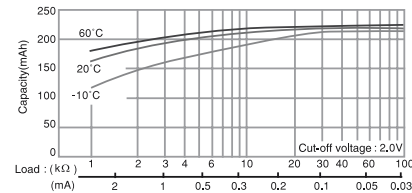
#### DISCHARGE TEMPERATURE CHARACTERISTICS



#### OPERATING VOLTAGE VS. DISCHARGE CURRENT\*



#### CAPACITY VS. LOAD RESISTANCE



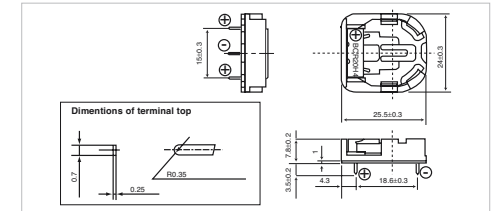
### Lithium battery holders for CR-2032

These battery holders are designed for sure and easy loading/removal of Panasonic Coin Type Lithium batteries in/from equipment enabling the batteries to fully exploit their capabilities as the back-up power supply in C-MOS RAM memory and microcomputer memory. All of the battery holders are designed to prevent inverted insertion of the battery.

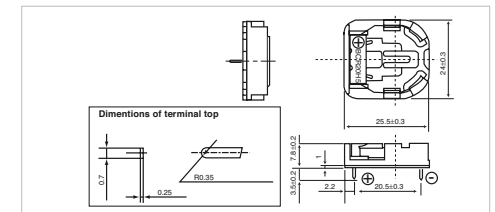


BCR20H4      BCR20H5      BCR20V4

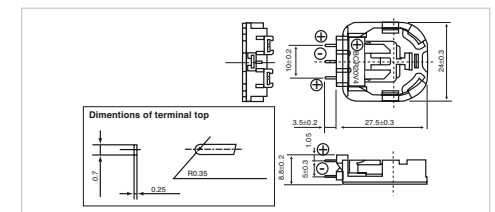
#### BCR20H4 (3 terminals)



#### BCR20H5 (2 terminals)



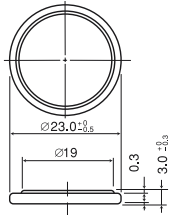
#### BCR20V4 (3 terminals)



### Precaution for washing battery holders

The battery holders can be adversely affected by some detergents use in the circuit board washing process and may result in cracks forming in the holder. Please test the holders in your washing process before use.

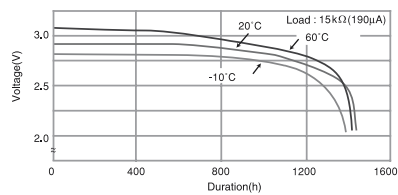
## CR-2330



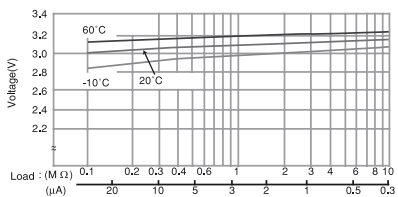
## SPECIFICATIONS

Name	CR-2330
Nominal voltage (V)	3
Nominal capacity (mAh)	265
Continuous drain (mA)	0.2
Operating temperature (°C)	-30 to +60
Weight (g)	3.8

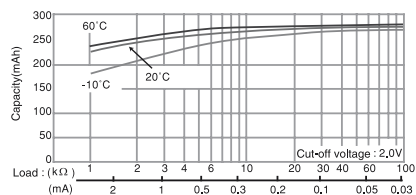
## DISCHARGE TEMPERATURE CHARACTERISTICS



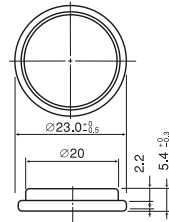
## OPERATING VOLTAGE VS. DISCHARGE CURRENT\*



## CAPACITY VS. LOAD RESISTANCE



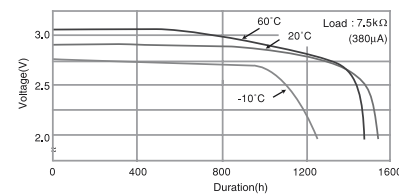
## CR-2354



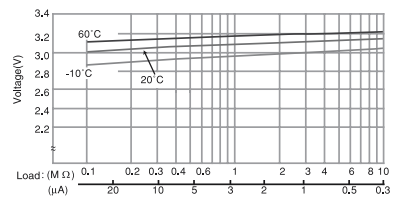
## SPECIFICATIONS

Name	CR-2354
Nominal voltage (V)	3
Nominal capacity (mAh)	560
Continuous drain (mA)	0.2
Operating temperature (°C)	-30 to +60
Weight (g)	5.8

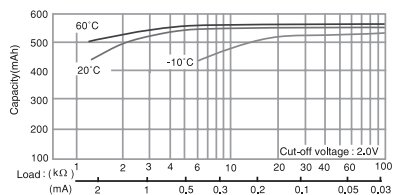
## DISCHARGE TEMPERATURE CHARACTERISTICS



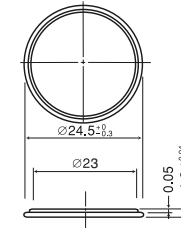
## OPERATING VOLTAGE VS. DISCHARGE CURRENT\*



## CAPACITY VS. LOAD RESISTANCE



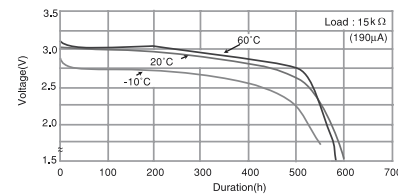
## CR-2412



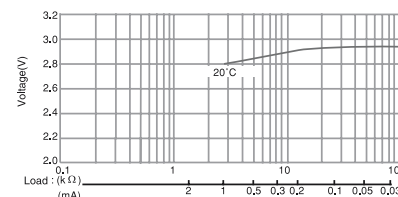
## SPECIFICATIONS

Name	CR-2412
Nominal voltage (V)	3
Nominal capacity (mAh)	100
Continuous drain (mA)	0.2
Operating temperature (°C)	-30 to +60
Weight (g)	2.0

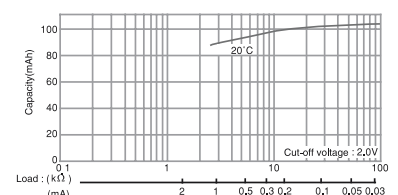
## DISCHARGE TEMPERATURE CHARACTERISTICS



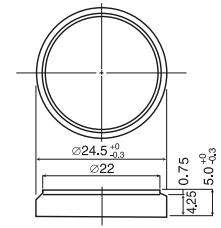
## OPERATING VOLTAGE VS. DISCHARGE CURRENT\*



## CAPACITY VS. LOAD RESISTANCE



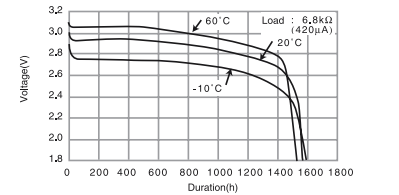
## CR-2450



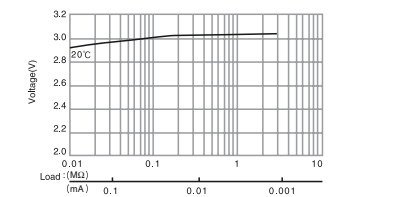
## SPECIFICATIONS

Name	CR-2450
Nominal voltage (V)	3
Nominal capacity (mAh)	620
Continuous drain (mA)	0.2
Operating temperature (°C)	-30 to +60
Weight (g)	6.3

## DISCHARGE TEMPERATURE CHARACTERISTICS



## OPERATING VOLTAGE VS. DISCHARGE CURRENT\*



## CAPACITY VS. LOAD RESISTANCE

