

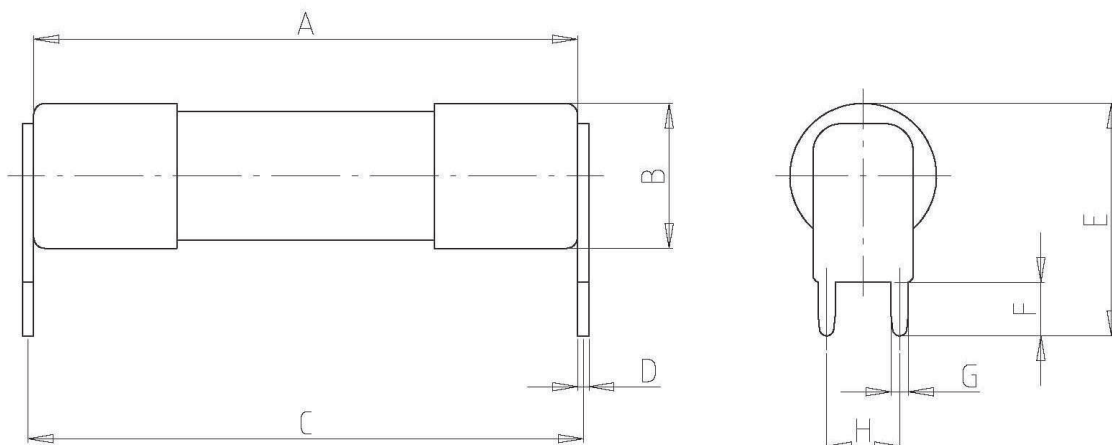
**Abmessungen**  
Dimensions

**Art.-Nr.:** 50 216 26  
part-no:

**Größe:** 10 x 38 mm  
size:

**Bemessungsstrom:** 1 - 20 A  
rated current:

**Besonderheit:** mit Einlötpins  
Features: for PCB mounting



A	B	C	D	E	F	G	H
[mm]	[mm]	[mm]	[mm]	[mm]	[mm]	[mm]	[mm]
38	10,3	38,8	0,8	16,4	3,8	1,2	5,1

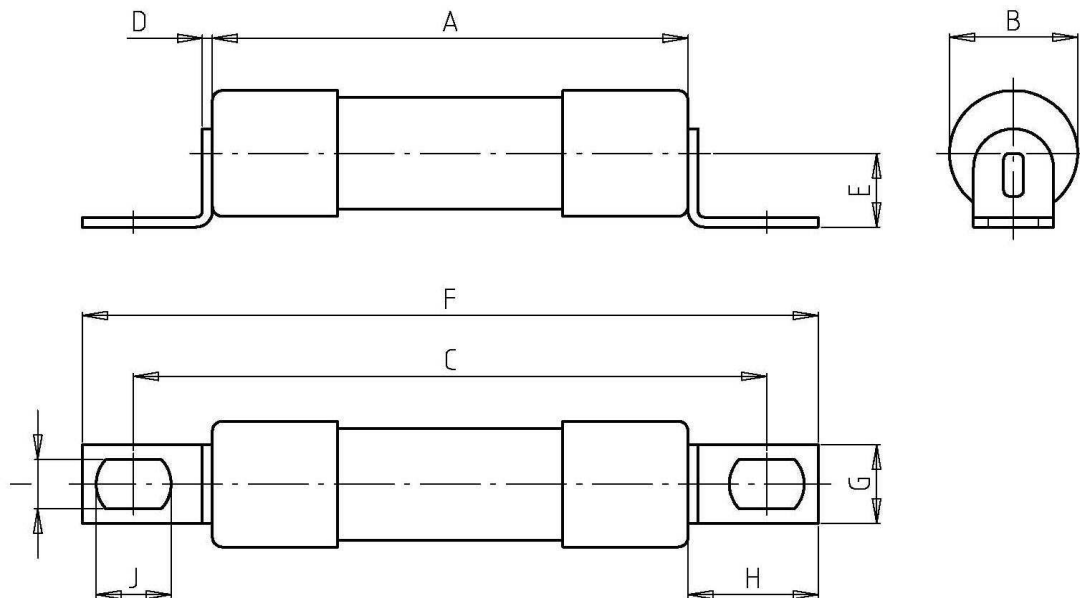
**Abmessungen**  
Dimensions

**Art.-Nr.:** 50 217 26  
part-no:

**Größe:** 10 x 38 mm  
size:

**Bemessungsstrom:** 1 - 20 A  
rated current:

**Besonderheit:** mit Anschraublaschen  
Features: with bolted contacts



A	B	C	D	E	F	G	H	I	J
[mm]	[mm]	[mm]	[mm]	[mm]	[mm]	[mm]	[mm]	[mm]	[mm]
38	10,3	50,6	0,8	6,0	58,8	6,4	10,4	4,0	6,0