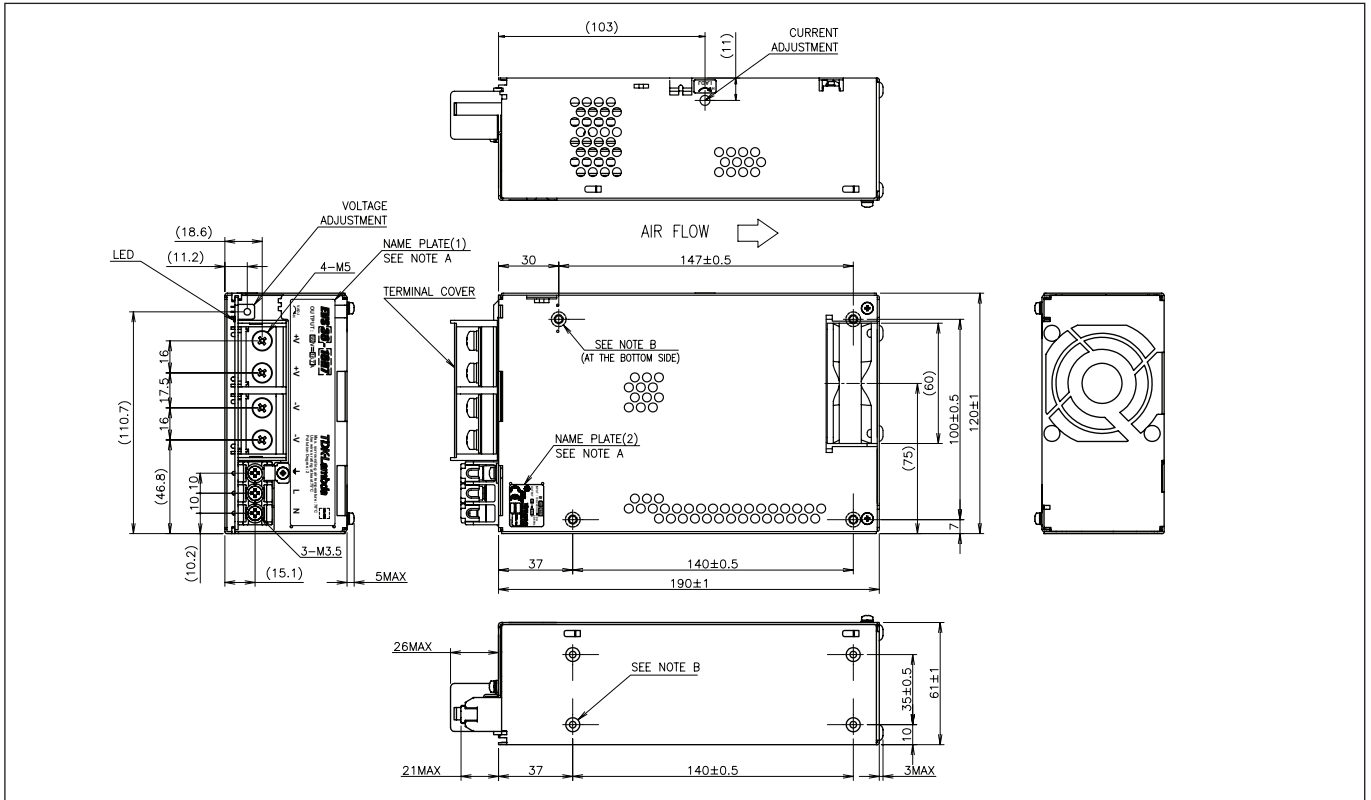


## Outline Drawing EVS600W Series

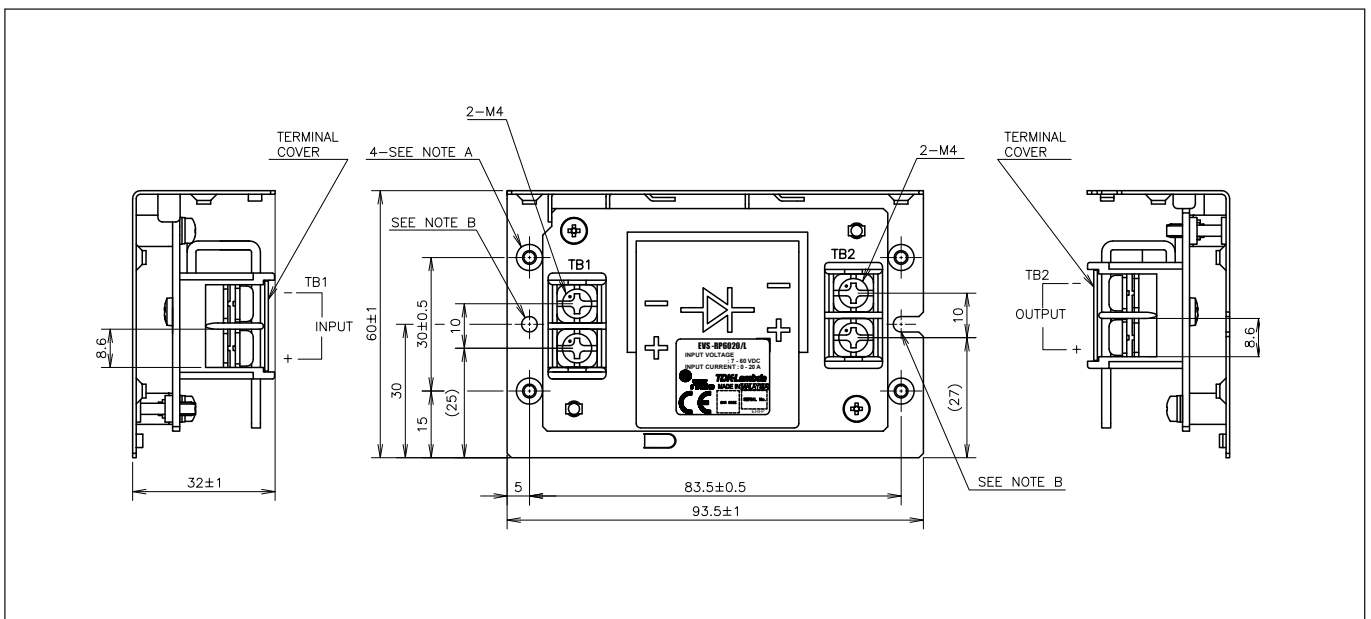


## Accessory

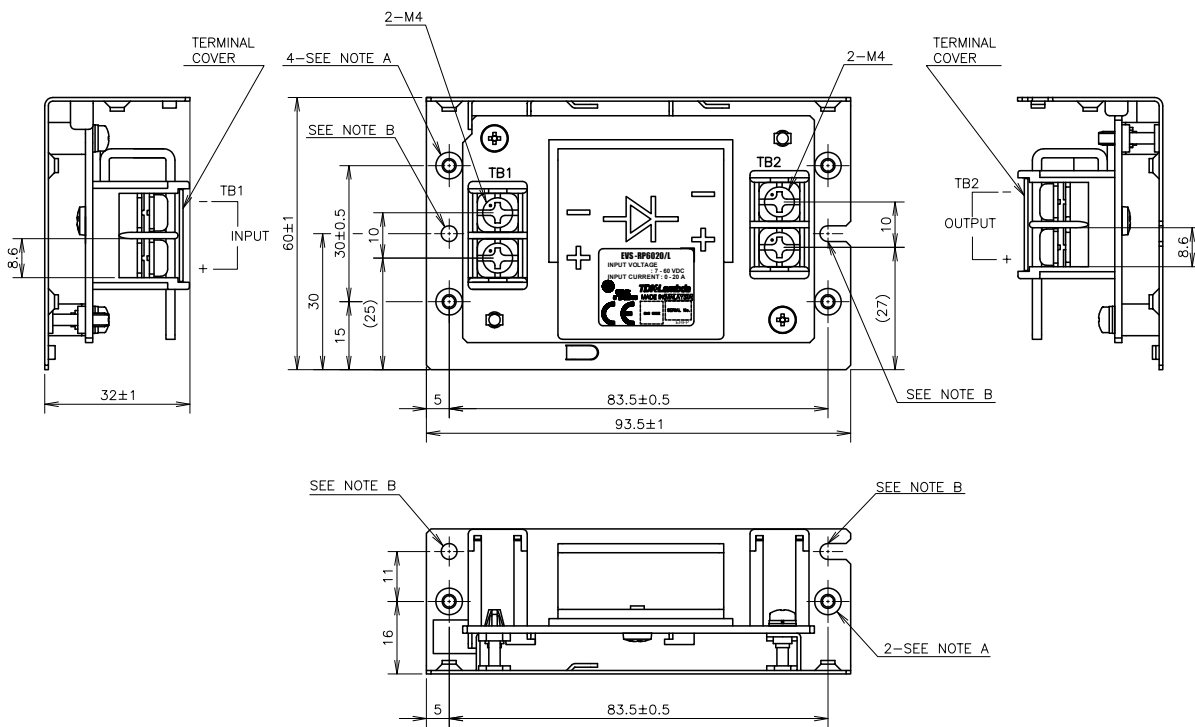
Model	Description
EVS-RP6020	20A Reverse current Prevention module for battery charging use (PCB type) *
EVS-RP6020/L	20A Reverse current Prevention module for battery charging use (on L bracket) *

\* The Reverse current Protection modules EVS-RP can also be used as replacement for Diode-modules (as e.g. DLP-PU)  
 - For power up in parallel operation  
 - For Back-up diode (N + I redundant operation)

## Outline Drawing EVS-RP6020 (Open frame)



## Outline Drawing EVS-RP6020/L Series



**Notes:**

- A: M3 embossed tapped and countersink holes (6) are for customer's chassis mounting
- B: Dia 3.5mm holes (2) and R1.75 slot holes (2) are for customer's chassis mounting holes
- C: Model name, input range and input current are shown here in accordance with the specifications
- D: Country of manufacture will be shown here

**Accessories:**

- \* Terminal cover for barrier terminal strip —2 (attached on terminal TB1 and TB2 at shipment)