

Magnetic Contactors and Starters

SC and SW series

Optional unit

Coil drive units for IC output SZ-CD

This unit is designed to carry out ON-OFF control for contactors with output (24V DC) from the electronic controller. It can be attached to a side or top of a contactor, thus saving on installation space.

■ Features

- This unit operates at, 24V DC.
- Module type allows easy attachment and removal.
- SZ-CD5 and -CD6 can be installed individually and rail mounted.
- Surge suppression function (except SZ-CD5)
- This unit has a built-in surge suppression device (varistor) to protect electronic equipment from surges which occur when the coil is de-energized.



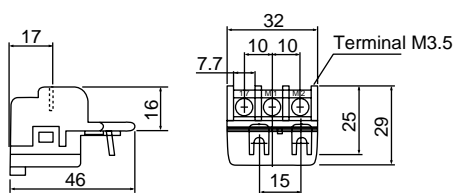
| Type | | Used with |
|---|-------------------|---|
| SZ-CD1 SZ-CD3 SZ-CD5 | With relay output | SC-03 to 5-1 SC-N1 to N3 SC-N4 to N12 |
| SZ-03/CD2-24 SZ-CD4 SZ-CD6 | With SSR output | SC-03 to 5-1 SC-N1 to N3 SC-N4to N12 |

■ Specifications

| Description | | SZ-CD1 | SZ-CD3, CD5 | SZ-03/CD2-24, CD4, CD6 |
|-------------|----------------------------|-------------------------------|-------------------------------|-------------------------------|
| Coil | Rated voltage | 24V DC | 24V DC | 24V DC |
| | Pick-up voltage (at 20°C) | 85% or less of rated voltage | 85% or less of rated voltage | 70% or less of rated voltage |
| | Drop-out voltage (at 20°C) | Over 5% of rated voltage | Over 5% of rated voltage | Over 5% of rated voltage |
| | Max. allowable voltage | 130% or less of rated voltage | 130% or less of rated voltage | 110% or less of rated voltage |
| | Power consumption | 0.2W(8.3mA) | 0.2W(8.3mA) | 0.36W(15mA) |
| Contact | Output device | Relay output | Relay output | SSR output |
| | Max. make/break voltage | 250V AC, 110V DC | 250V AC | 100-240V AC |
| | Operating time(ms) | 2-5 | 2-5(SZ-CD5: 3-6) | 1 or less |

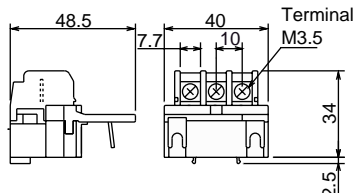
■ Dimensions, mm

SZ-CD1,03/CD2-24 (Top mount)



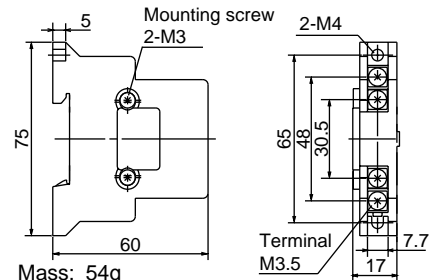
Mass: 26g

SZ-CD3,CD4 (Top mount)



Mass: 28g

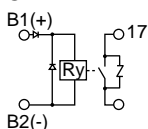
SZ-CD5,CD6 (Side mount)



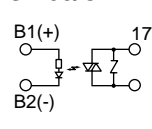
Mass: 54g

■ Wiring diagrams

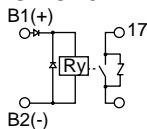
SZ-CD1



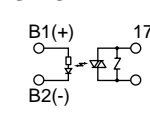
SZ-03/CD2-24



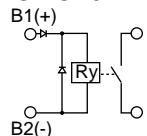
SZ-CD3



SZ-CD4



SZ-CD5



SZ-CD6

