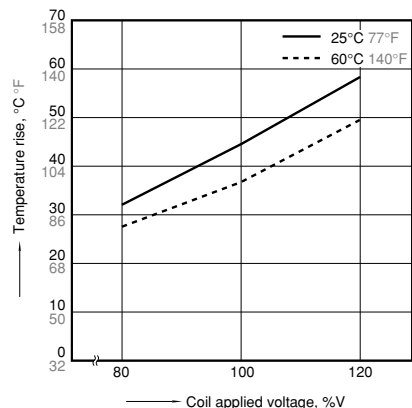


REFERENCE DATA

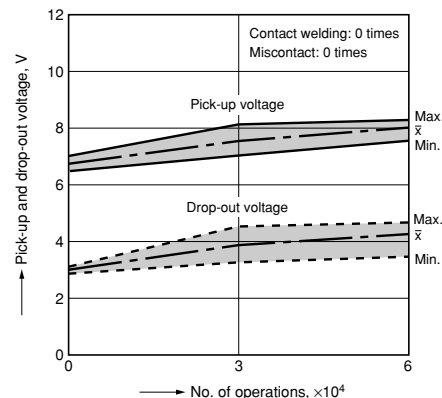
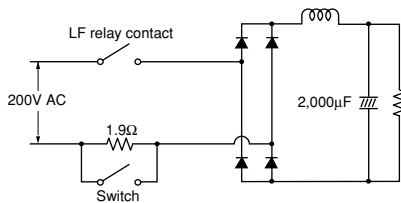
1. Coil temperature rise

Sample: ALF1T12, 6 pcs.
 Point measured: coil inside
 Ambient temperature: 25°C 77°F, 60°C 140°F
 Contact current: 20A



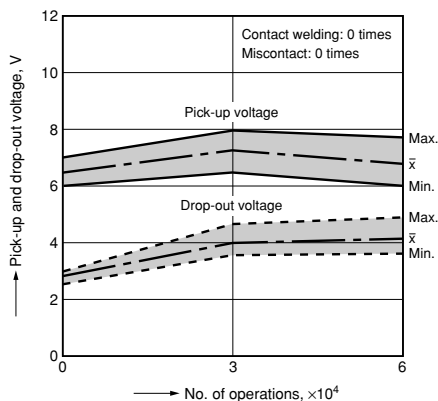
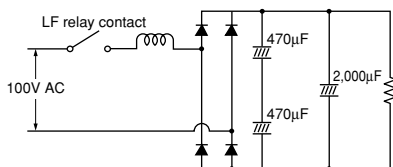
2-(1). 200V AC electrical life test (200V AC, inverter load)

Sample: ALF1T12, 6 pcs.
 Load: Inrush 102A (wave peak value),
 Steady 14.4A (wave peak value)
 Inverter dummy 200V AC
 Switching frequency: ON 1s, OFF 5s
 Circuit:



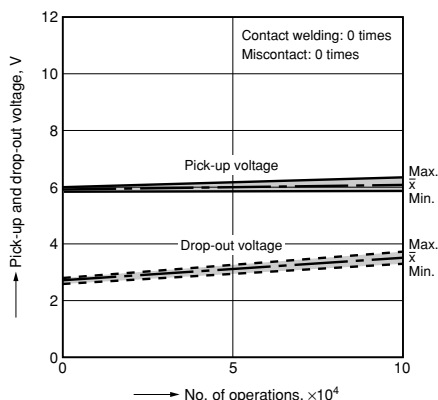
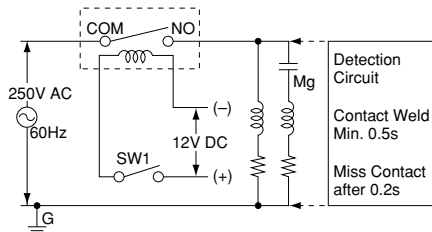
2-(2). 100V AC electrical life test (100V AC, inverter load)

Sample: ALF1T12, 6 pcs.
 Load: Inrush 224A (wave peak value),
 Steady 30.5A (wave peak value)
 Inverter dummy 100V AC
 Switching frequency: ON 1s, OFF 5s
 Circuit:



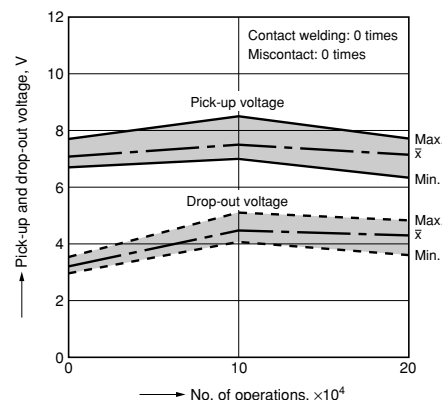
2-(3). Inrush 70.7A, Steady 20A, 250V AC electrical life test (Compressor dummy load)

Sample: ALF1T12, 6 pcs.
 Load: Inrush 70.7A, cosφ = 0.7
 Steady 20A, cosφ 0.9
 250V AC compressor dummy
 Switching frequency: ON 1.5s, OFF 1.5s
 Circuit:



2-(4). Electrical life test (20A 250V AC, resistive load)

Sample: ALF1T12, 6 pcs.
 Switching frequency: ON 1.5s, OFF 1.5s



LF (ALF)

DIMENSIONS (mm inch)

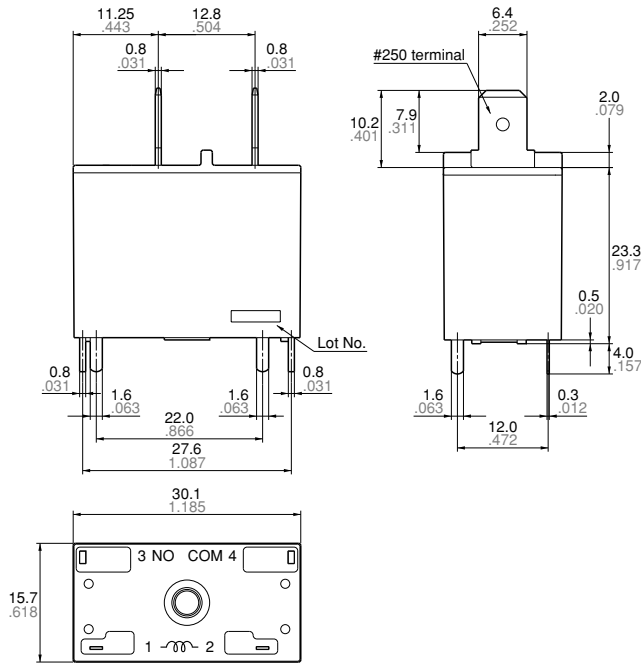
The CAD data of the products with a **CAD Data** mark can be downloaded from: <http://industrial.panasonic.com/ac/e/>

1. TMP type

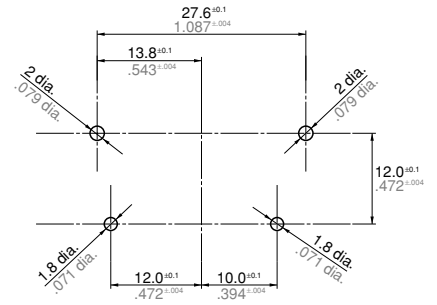
CAD Data



External dimensions

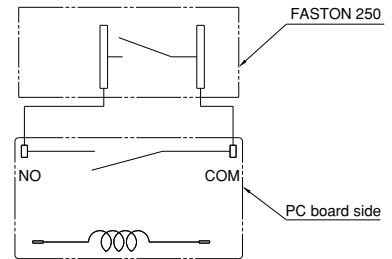


PC board pattern (Bottom view)



Tolerance: $\pm 0.1 \pm 0.004$

Schematic (Bottom view)



Dimension:
 Less than 1mm .039inch:
 Min. 1mm .039inch less than 3mm .118 inch:
 Min. 3mm .118 inch:

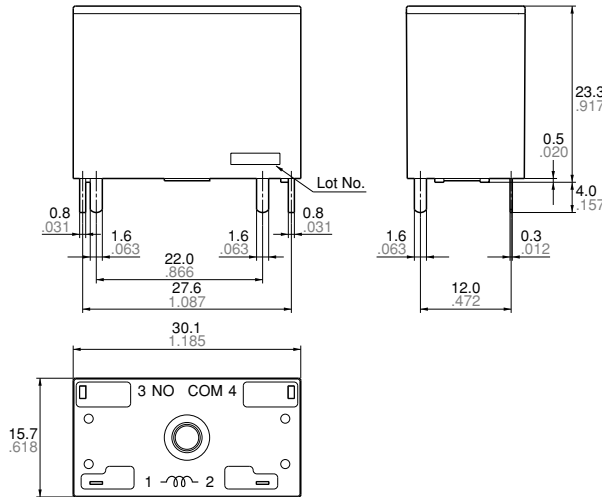
Tolerance
 $\pm 0.1 \pm 0.004$
 $\pm 0.2 \pm 0.008$
 $\pm 0.3 \pm 0.012$

2. PCB type

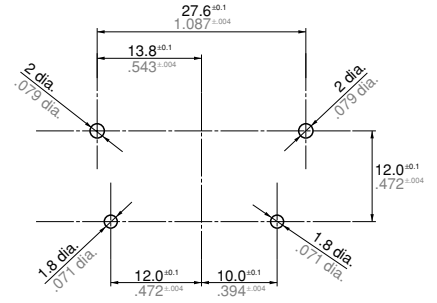
CAD Data



External dimensions

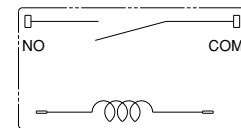


PC board pattern (Bottom view)



Tolerance: $\pm 0.1 \pm 0.004$

Schematic (Bottom view)



Dimension:
 Less than 1mm .039inch:
 Min. 1mm .039inch less than 3mm .118 inch:
 Min. 3mm .118 inch:

Tolerance
 $\pm 0.1 \pm 0.004$
 $\pm 0.2 \pm 0.008$
 $\pm 0.3 \pm 0.012$

SAFETY STANDARDS

UL/C-UL (Recognized)				VDE (Certified)				TÜV (Certified)				TV rating (UL)	
File No.	Contact rating	Temp.	Cycles	File No.	Contact rating	Temp.	Cycles	File No.	Contact rating	Temp.	Cycles	File No.	Contact rating
E43028	25A 277V AC	40°C 104°F	6 × 10 ³	40009169	20A 250V AC (cosφ=1.0)	60°C 140°F	10 ⁴	B 12 06 13461 326	20A 250V AC (cosφ=1.0)	60°C 140°F	10 ⁴	E43028	TV-8
	20A 277V AC	40°C 104°F	10 ⁵		—	—	—	—	—	—	—	—	—

* CSA standard: Certified by C-UL