

## Up to PL e of EN ISO 13849-1 PNOZ X3

### Preparing for operation

► Supply voltage

Supply voltage	AC	DC

► Input circuit

Input circuit	Single-channel	Dual-channel
E-STOP <b>without</b> detection of shorts across contacts		
E-STOP <b>with</b> detection of shorts across contacts		
Safety gate <b>without</b> detection of shorts across contacts		
Safety gate <b>with</b> detection of shorts across contacts		

## Up to PL e of EN ISO 13849-1 PNOZ X3

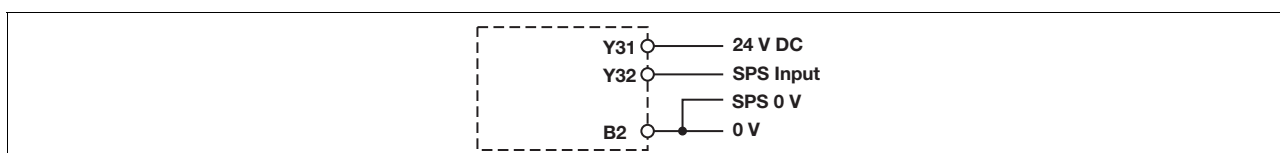
### ▶ Reset circuit

Reset circuit	E-STOP wiring Safety gate without position monitoring	Safety gate with position monitoring
Automatic reset		
Monitored reset		

### ▶ Feedback loop

Feedback loop	Automatic reset	Monitored reset
Contacts from external contactors		

### ▶ Semiconductor output



### ▶ Key

S1/S2	E-STOP/safety gate switch
S3	Reset button
	Switch operated
	Gate open
	Gate closed