

MCUSD17.5A48S11RS-30C



Applications:

This specification covers the water proof type ultrasonic ceramic transducer which are used for ultrasonic ranging and parking sensor of automobile.

Features:

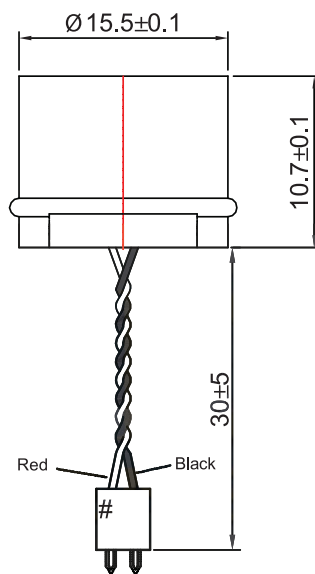
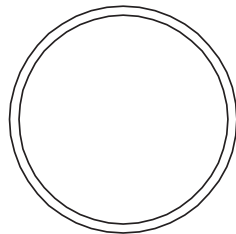
- Water proof and dual use
- Compact and light weight
- High sensitivity and sound pressure
- Less power consumption
- High reliability

Technical Terms:

No	Item	Specification
1	Part Number	MCUSD17.5A48S11RS-30C
2	Construction	Water Proof
3	Using Method	Dual Use
4	Centre Frequency	48 ± 1kKz
5	Sound Pressure Level (dB)	≥90 (30cm/10V rms)
6	Sensitivity (dB)	≥-75dB/V/μbar
7	Beam pattern	110 × 50°
8	Capacitance (pF)	1,800 ± 25% at1kHz
9	Operating Temperature Range	-40°C to 85°C
10	Storage Temperature Range	-40°C to 85°C
11	Allowable Input Voltage (Vp-p)	160Vp-p
12	Housing Material	Aluminium

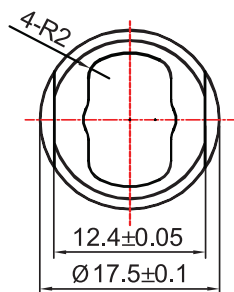
MCUSD17.5A48S11RS-30C

Drawing:



Lead wire
AWG30 Red,Black
connector pitch 2mm

#:EIAJ code



Dimensions : Millimetres