

**LABFACILITY**  
TEMPERATURE TECHNOLOGY

**A COMPLETE RANGE OF THERMOCOUPLE  
AND RTD SENSORS FROM STOCK**

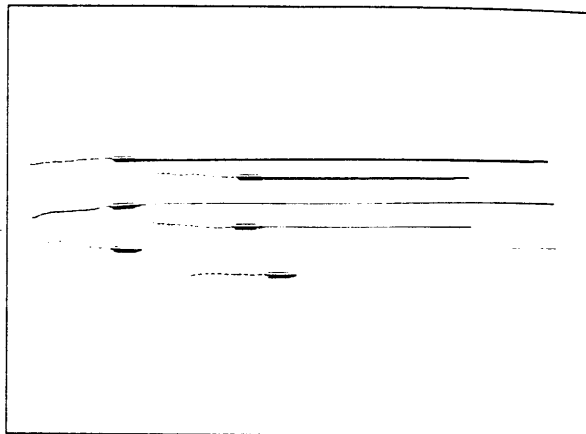
#### TYPE K MINERAL INSULATED THERMOCOUPLES

This range of rugged type K mineral insulated thermocouple probes is suitable for temperatures up to 1100°C. The probes can be bent to enable fitting in awkward locations, and being very reliable and stable, are particularly suitable for industrial applications including high pressure, high vacuum, high vibration and harsh environments in general.

The thermocouple junction is located at the tip and is insulated from the sheath.

The probes are available in various diameters and lengths. Smaller diameter probes respond to temperature changes more rapidly than larger diameters. However, larger diameter probes are mechanically stronger and have a longer operational life when used at high temperatures.

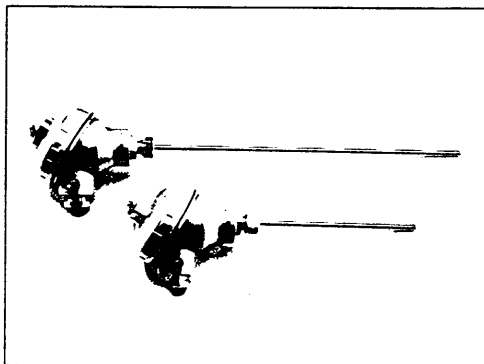
Labfacility offers a wide range of compression fittings for installation of mineral insulated thermocouples (details available on request - separate leaflet refers).



Specifications		Order Codes			
Sensor:	Type K to BS4937 Part 4	Diam x Length (mm)	Order Code	Diam x Length (mm)	Order Code
Sheath:	310 stainless steel	1.0 x 150	KMI-020-X	3.0 x 150	KMI-250-X
Temperature range of probe:	-50 to +1100°C	1.0 x 250	KMI-030-X	3.0 x 250	KMI-300-X
Max temperature of pot seal (cold end):	200°C	1.5 x 150	KMI-050-X	3.0 x 500	KMI-350-X
Lead:	100mm, PTFE insulated	1.5 x 250	KMI-100-X	3.0 x 1000	KMI-400-X
		1.5 x 500	KMI-150-X	6.0 x 250	KMI-450-X
		1.5 x 1000	KMI-200-X	6.0 x 500	KMI-500-X

Alternatively we can supply custom-made probes to special order - please contact our sales department.

#### INDUSTRIAL TYPE K THERMOCOUPLES WITH TERMINAL HEADS



This range of industrial type K thermocouples is suitable for a wide variety of applications with a maximum temperature of 1100°C. These mineral insulated thermocouples are very rugged, comprising a strong 6mm diameter stainless steel stem and waterproof aluminium terminal head. The head houses a terminal block with terminals of thermocouple material; cable entry is via a M20 cable gland.

The thermocouple junction is located at the tip and insulated from the sheath.

The probes are available in various lengths and can be installed using Labfacility compression fittings and/or thermopockets.

These assemblies can be supplied with head mounting 4-20mA transmitters to special order - please contact our sales department

Specifications		Order Codes	
Sensor:	Type K to BS4937 Part 4	Probe Length(mm)	Order Code
Sheath:	6mm diameter 310 stainless steel	150	K-150-KNE-X
Terminal Head:	Waterproof, die cast aluminium with epoxy coating. Screw lid with retaining chain	200	K-200-KNE-X
Temperature range of probe:	-50 to +1100°C	300	K-300-KNE-X
		400	K-400-KNE-X
		600	K-600-KNE-X

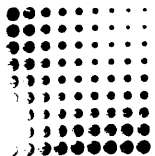
Alternatively we can supply custom-made probes to special order - please contact our sales department.

LABFACILITY LIMITED

Tel: 0181 943 5331 Fax: 0181 943 4351

HEADQUARTERS: LABFACILITY LTD, 99 Waldegrave Road, Teddington, Middlesex TW11 8LR, UK. Tel: 0181 943 5331 Telex: 8952151 Intemp G Fax: 0181 943 4351

NORTHERN DIVISION: LABFACILITY LTD, Unit 7 Abbey Way, North Anston Trading Estate, Dinnington, Sheffield S31 7LJ, UK. Tel: 01909 569446 Fax 01909 550632



# LABFACILITY

TEMPERATURE TECHNOLOGY

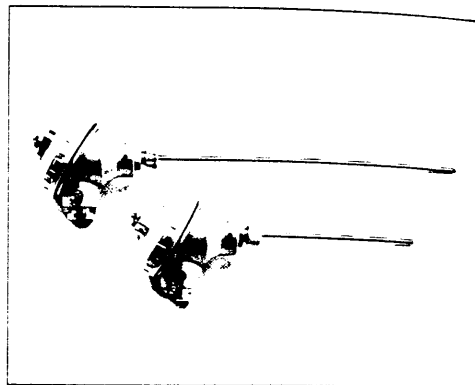
## A COMPLETE RANGE OF THERMOCOUPLE AND RTD SENSORS FROM STOCK

### INDUSTRIAL Pt100 PROBES WITH TERMINAL HEADS

This range of industrial Pt100 probes is suitable for a wide range of applications. For use up to 450°C, the probes are recommended where the superior accuracy of Pt100s over thermocouples is required. The assemblies utilise a 6mm diameter stainless steel stem below a waterproof terminal head. The head contains a terminal block allowing connection to the measuring instrument via a M20 cable gland.

The probes are 4 wire configured allowing connection to any Pt100 instrument using 2,3, or 4 wire.

The probes are available in various lengths and can be installed using Labfacility compression fittings or thermopockets.



These assemblies can be supplied with head mounting 4-20mA transmitters to special order - please contact our sales department.

Specifications		Order Codes	
Sensor:	Pt100 to BS1904 (1984) Class B and DIN 43760. 100 ohms at 0°C. 4 wire.	Probe Length(mm)	Order code
Sheath:	6mm diameter stainless steel	150	Pt-150-KNE-X
Terminal head:	Waterproof, die cast aluminium with epoxy coating. Screw lid with retaining chain.	200	Pt-200-KNE-X
Temperature range of probe:	-100 to +450°C	300	Pt-300-KNE-X
		400	Pt-400-KNE-X
		600	Pt-600-KNE-X

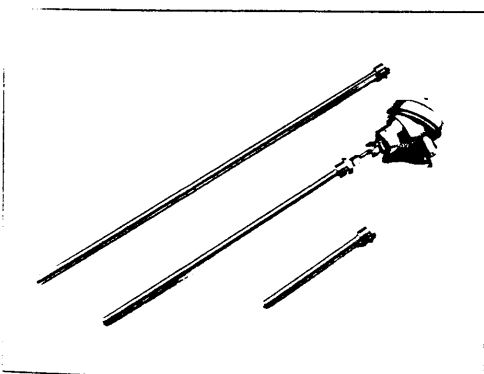
Alternatively we can supply custom-made probes to special order - please contact our sales department.

### STAINLESS STEEL THERMPOCKETS

This is a range of competitively priced stainless steel thermopockets for use with Labfacility industrial style sensors or other probes up to 1/4" diameter. The use of thermopockets is recommended where the removal of temperature probes without a pocket would require process shut down or draining of the system.

Probes are secured within the pockets using a suitable compression fitting (available separately) and the pocket has a 1/2" BSP (P) male thread for installation in the process.

The pockets are available in a variety of lengths. We recommend the pocket to be 50mm shorter than the associated probe length to ensure complete entry and seating of the probe.



Specifications		Order Codes		
Material:	Stainless Steel	Pocket Length (mm)	Recommended Minimum Probe Length (mm)	Order Code
Outside diameter:	7/16"	100	150	TP-100-X
Wall thickness:	0.08"	150	200	TP-150-X
Male process thread:	1/2"BSP(P)	250	300	TP-250-X
Internal thread:	1/8"BSP(P)	350	400	TP-350-X
		550	600	TP-550-X

Alternatively we can supply custom-made thermopockets to special order - please contact our sales department.

### LABFACILITY LIMITED

Tel: 0181 943 5331 Fax: 0181 943 4351

HEADQUARTERS: LABFACILITY LTD, 99 Waldegrave Road, Teddington, Middlesex TW11 8LR, UK. Tel: 0181 943 5331 Telex: 8952151 Intemp G Fax: 0181 943 4351

NORTHERN DIVISION: LABFACILITY LTD, Unit 7 Abbey Way, North Anston Trading Estate, Dinnington, Sheffield S31 7LJ, UK. Tel: 01909 569446 Fax 01909 550632