

# SSF212 Series

## Compact external fitting via 1/2" NPT thread



- External fitting via 1/2" NPT thread
- SS 316 float
- Compact switch design
- High Temperature version available (180°C)
- User configurable N/O (make on rise) or N/C (make on fall)

### Technical Specification

|                       |                         |                                  |                 |
|-----------------------|-------------------------|----------------------------------|-----------------|
| Mounting style        | External                | Cable length - standard          | 100cm or plug   |
| Mounting thread       | 1/2" NPT                | Cable size                       | 17/0.10 - AWG22 |
| Float & Stem material | 316 & 304 grade SS      | Cable conductor material         | Tinned copper   |
| Maximum Temperature   | 120°C (H version 180°C) | Cable sheath material            | XLPE            |
| Maximum pressure      | 5 bar                   | Cable temperature rating         | 125°C           |
| Float SG              | 0.7                     | Sealing gasket                   | Not supplied    |
| Minimum fluid SG      | 0.8                     | Tightening torque for fixing nut | 2.0kg/cm        |

### Electrical Specification

|                          |           |                            |
|--------------------------|-----------|----------------------------|
| Contact Form             | N/O (N/C) |                            |
| Switching Power Max      | VA        | 50                         |
| Switching Voltage AC Max | V         | 300 (SSF212XPM12 = 240Vac) |
| Switching Voltage DC Max | V         | 300 (SSF212XPM12 = 200Vdc) |
| Switching Current Max    | A         | 0.5                        |

All ratings are for resistive load only.

The SSF212 series are horizontally mounted switches that are fitted via a 1/2" NPT thread from the outside of the tank, so does not require access to the inside of the tank.

These are manufactured in SS 304 & 316 and will work in liquids of SG 0.8 minimum.

The switch action may be reversed by mounting the device with the orientation arrow pointing downwards, instead of the normal upwards direction.

These are available with either 100cm flying lead, DIN 43650 plug & socket or M12 round connection.

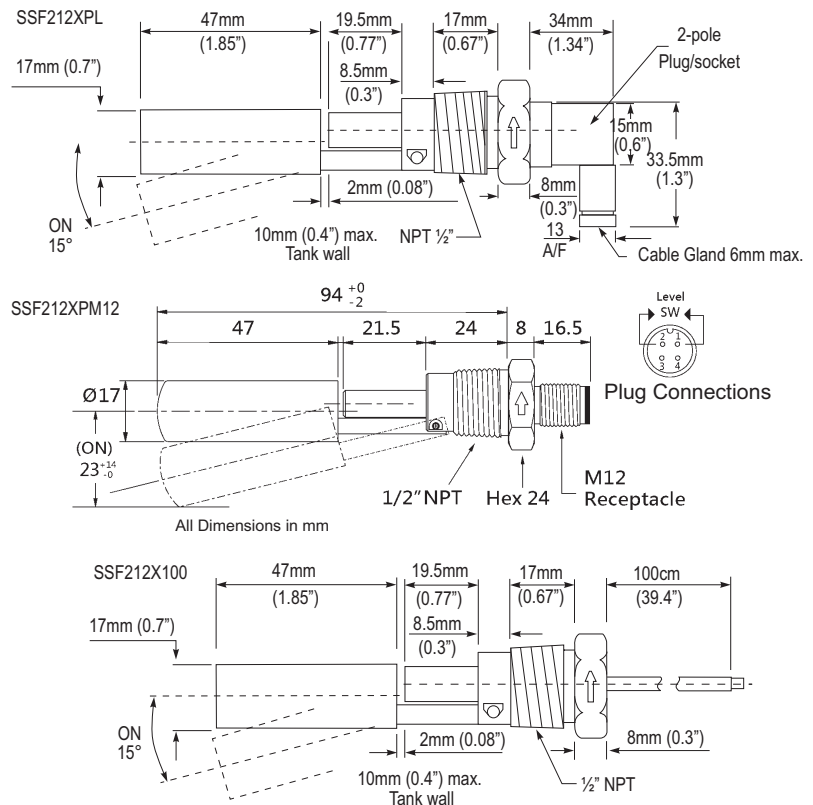
Cable sets are available for use with M12 connection versions.

### Standard Parts

| Standard Parts | Float Material | Stem Material | Max Power | Leadouts          |
|----------------|----------------|---------------|-----------|-------------------|
| SSF212X100     | SS 316         | SS 304        | 50VA      | 100cm XLPE 17/0.1 |
| SSF212X100H    | SS 316         | SS 304        | 50VA      | 100cm XLPE 17/0.1 |
| SSF212XPL      | SS 316         | SS 304        | 50VA      | Plug & Socket     |
| SSF212XPM12    | SS316          | SS304         | 50VA      | M12 4-pin socket  |

Custom versions can be made for particular applications. Please contact Cynergy3 with your requirements.

### Mechanical Dimensions



Cynergy3 Components Ltd.  
7 Cobham Road  
Ferndown Industrial Estate  
Wimborne, Dorset BH21 7PE  
Telephone +44 (0) 1202 897969

Email: sales@cynergy3.com

ISO9001 CERTIFIED

SSF212 2017