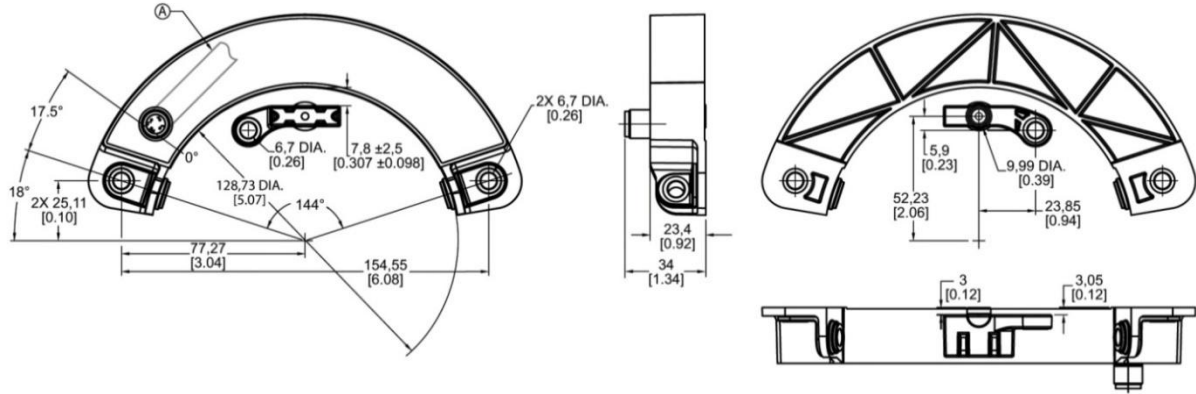


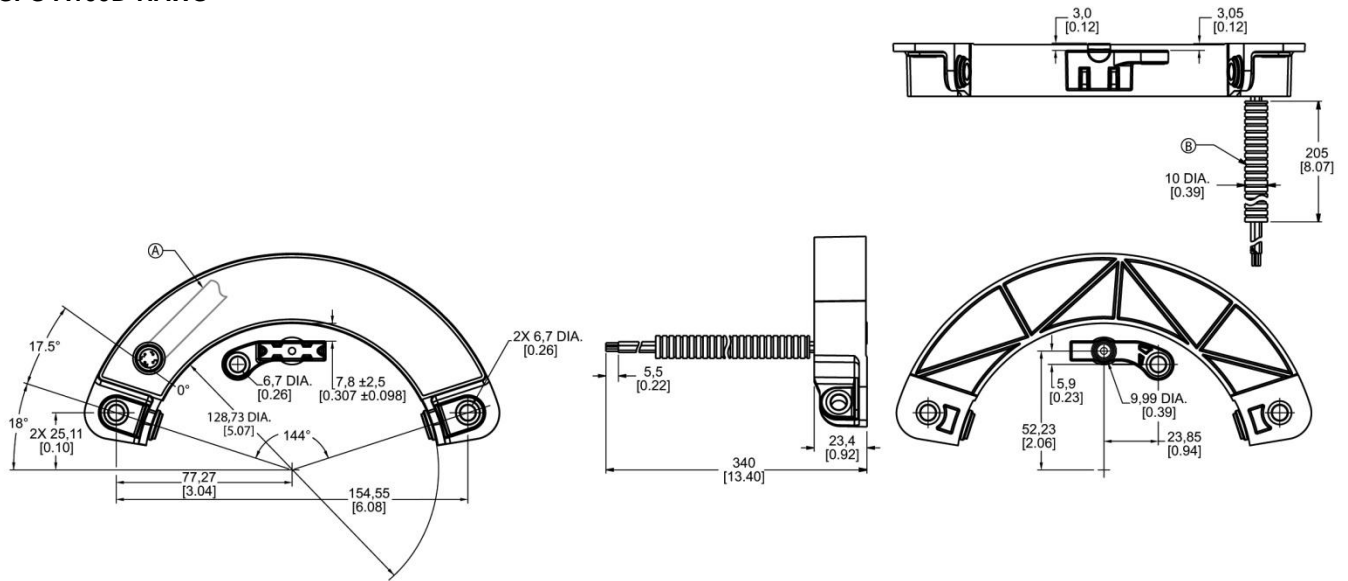
# 100° and 180° Arc Configurations

Figure 1. Dimensional Drawings (For reference only: mm)

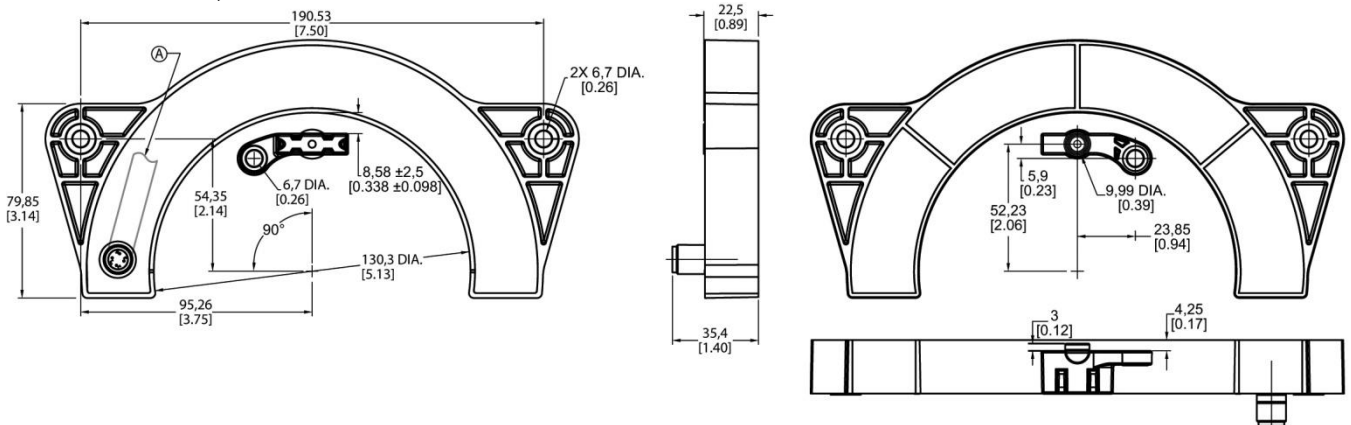
## SPS-A100D-HAMS, SPS-A100D-VAMS



## SPS-A100D-HAWS



## SPS-A180D-HAMS, SPS-A180D-VAMS



A = Cable direction for right angle connector

B = Polyethylene conduit

# SMART Position Sensor

Figure 2. Connections

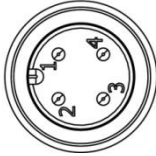
Pinout	Flying Leads
<p>SPS-A100D-HAMS, SPS-A100D-VAMS SPS-A180D-HAMS, SPS-A180D-VAMS</p>  <p>Pin 1 = supply voltage (+) Pin 2 = output Pin 3 = ground (-) Pin 4 = inverted output</p>	<p>SPS-A100D-HAWS</p> <p>Red wire = supply voltage (+) Green wire = output Black wire = ground (-) Blue wire = inverted output</p>

Figure 3. Sensor Output Performance Chart Showing Ideal Outputs (Applies to all catalog listings.)

