

HybridPACK™ 2 Module

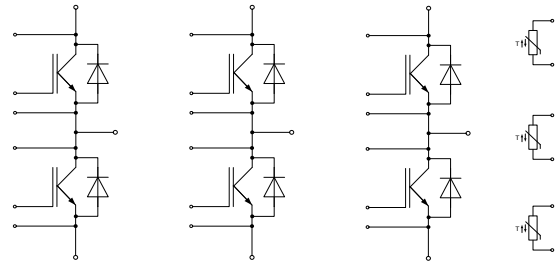
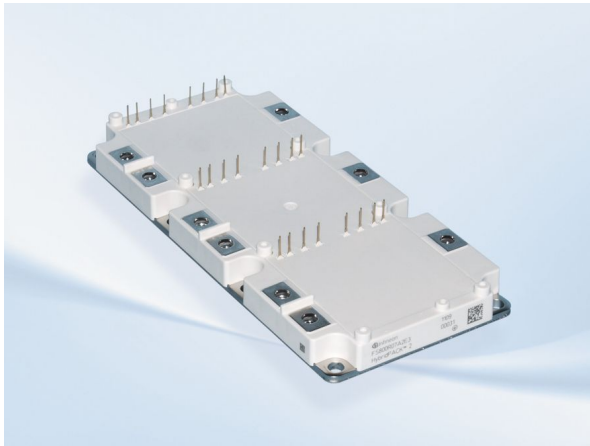
FS900R08A2P2_B32

Final Data Sheet

V3.0, 2017-06-14

Automotive High Power

1 Features / Description



$V_{CES} = 750V$
 $I_{C\ nom} = 900A$

Typical Applications

- Automotive Applications
- Hybrid Electrical Vehicles (H)EV
- Commercial Agriculture Vehicles
- Motor Drives
- Optimized for automotive applications with DC link voltages up to 450 V

Electrical Features

- V_{CESat} with positive Temperature Coefficient
- Low V_{CESat}
- Low Switching Losses
- Low Q_g and C_{res}
- Low Inductive Design
- $T_{vj\ op} = 150^\circ C$
- Short-time extended Operation Temperature
 $T_{vj\ op} = 175^\circ C$

Mechanical Features

- 2.5kV AC 1min Insulation
- Direct Cooled Base Plate
- High Power Density
- Integrated NTC temperature sensor
- Copper Base Plate
- Isolated Base Plate
- RoHS compliant

Product Name	Ordering Code
FS900R08A2P2_B32	-