

## PERFORMANCE SPECIFICATIONS

Supply Current: 1.5mA

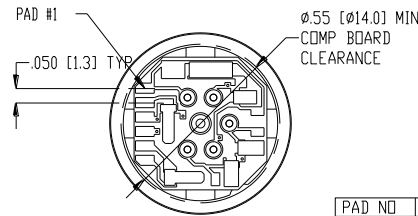
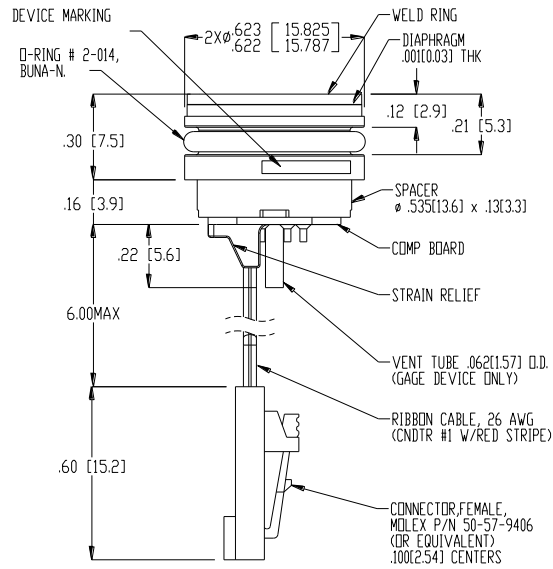
Ambient Temperature: 25°C (unless otherwise specified)

| PARAMETERS                    | 005PSI  |       |      | ≥015PSI |       |      | UNITS      | NOTES |
|-------------------------------|---|-------|------|---------|-------|------|------------|-------|
|                               | MIN   | TYP   | MAX  | MIN     | TYP   | MAX  |            |       |
| Span                          | 50  | 100   | 150  | 75      | 100   | 150  | mV         | 1     |
| Zero Pressure Output          | -2.0  | 0     | 2.0  | -1.0    | 0     | 1.0  | mV         | 2     |
| Pressure Non Linearity        | -0.2  |       | 0.2  | -0.1    |       | 0.1  | %Span      | 3     |
| Pressure Hysteresis           | -0.10   | ±0.02 | 0.10 | -0.05   | ±0.02 | 0.05 | %Span      |       |
| Repeatability                 |   | ±0.02 |      |         | ±0.02 |      | %Span      |       |
| Input Resistance              | 2.5K  | 5.0K  | 6.5K | 2.0K    | 3.5K  | 5.8K | Ω          |       |
| Output Resistance             | 4.0K  |       | 7.0K | 4.0K    |       | 6.0K | Ω          |       |
| Temperature Error – Span      | -1.0  |       | 1.0  | -0.75   |       | 0.75 | %Span      | 4     |
| Temperature Error – Offset    | -1.5  |       | 1.5  | -0.50   |       | 0.50 | %Span      | 4, 5  |
| Thermal Hysteresis – Span     | -0.25   | ±0.05 | 0.25 | -0.25   | ±0.05 | 0.25 | %Span      | 4     |
| Thermal Hysteresis – Offset   | -0.25   | ±0.05 | 0.25 | -0.25   | ±0.05 | 0.25 | %Span      | 4     |
| Long Term Stability – Span    |   | ±0.10 |      |         | ±0.10 |      | %Span/Year |       |
| Long Term Stability – Offset  |   | ±0.25 |      |         | ±0.10 |      | %Span/Year |       |
| Supply Current                | 0.5   | 1.5   | 2.0  | 0.5     | 1.5   | 2.0  | mA         | 6     |
| Output Load Resistance        | 5M  |       |      | 5M      |       |      | Ω          | 7     |
| Insulation Resistance (50Vdc) | 50M   |       |      | 50M     |       |      | Ω          | 8     |
| Output Noise (10Hz to 1KHz)   |   | 1.0   |      |         | 1.0   |      | uV p-p     |       |
| Response Time (10% to 90%)    |   | 0.1   |      |         | 0.1   |      | ms         |       |
| Pressure Overload             |   |       | 3X   |         |       | 3X   | Rated      |       |
| Pressure Burst                |   |       | 4X   |         |       | 4X   | Rated      | 9     |
| Compensated Temperature       | 0   |       | 50   | -20     |       | +85  | °C         |       |
| Operating Temperature         | -20   |       | +70  | -40     |       | +125 | °C         | 10    |
| Storage Temperature           | -50   |       | +125 | -50     |       | +125 | °C         | 10    |
| Media – Pressure Port         | Liquids and Gases compatible with 316/316L Stainless Steel                                |       |      |         |       |      |            |       |
| Media – Reference Port        | Compatible with Silicon, Pyrex, Gold, Fluorosilicone Rubber, and 316/316L Stainless Steel |       |      |         |       |      |            |       |

## Notes

- For amplified output circuits, 3.012V ±1% interchangeability with gain set resistor. See application schematic.
- Measured at vacuum for absolute (A) and at ambient for gage (G).
- Best fit straight line.
- Over the compensated temperature range with respect to 25°C.
- 15-psi range sensors have a temperature error of °0.75% (max) of zero from -20°C to +85°C.
- Guarantees output/input ratiometricity.
- Load resistance to reduce measurement errors due to output loading.
- Between case and sensing element.
- The maximum pressure that can be applied to a transducer without rupture of either the sensing element or transducer.
- Maximum temperature range for product with standard cable and connector is -20°C to +105°C.

## DIMENSIONS



VIEW SHOWN W/O CABLE AND CONNECTOR FOR CLARITY

| PAD NO | FUNCTION |
|--------|----------|
| 1      | +OUT     |
| 2      | -EX      |
| 3      | +EX      |
| 4      | -OUT     |
| 5      | GAIN     |
| 6      |          |

DIMENSIONS ARE IN INCHES [mm]

## CONNECTIONS

