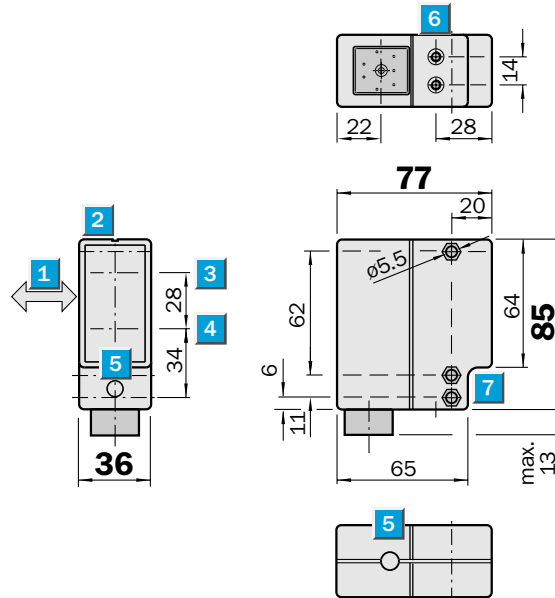

Scanning distance
 200...800 mm
Photoelectric proximity switches

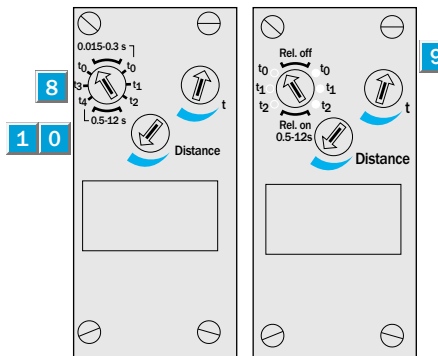
- Robust plastic housing
- Infrared light
- Selectable time delay

Dimensional drawing



Adjustments possible

WT 36-N 410	WT 36-R 710
WT 36-P 410	
WT 36-N 710	
WT 36-P 710	



- 1 Standard direction of the material being scanned
- 2 Alignment sight
- 3 Centre of optical axis, receiver
- 4 Centre of optical axis, sender
- 5 LED signal strength indicator
- 6 M5 threaded mounting hole – 5.5 mm deep
- 7 Mounting holes, recesses on both sides for M5 hex nuts
- 8 Time delay selector switch with DC, time delay and light-/dark-switching selector switches with UC
- 9 Light-switching
- 10 Dark-switching
- 9 Time control
- 10 Scanning distance adjustment

Switch-selectable time delay

0.015 – 0.3 s with DC only

t_0 without time delay
 t_1 ON-delay
 t_2 OFF-delay

0.5 – 12 s with DC

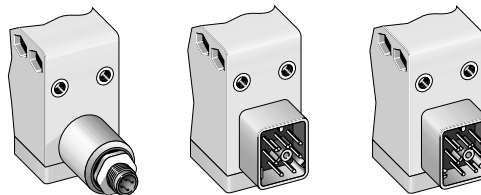
t_0 without time delay
 t_3 ON-delay
 t_4 OFF-delay

0.5 – 12 s with UC

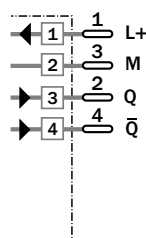
t_0 without time delay
 t_1 ON-delay
 t_2 OFF-delay

Connection types

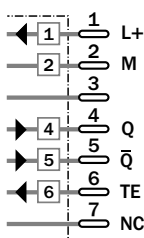
WT 36-N 410	WT 36-N 710	WT 36-R 710
WT 36-P 410	WT 36-P 710	



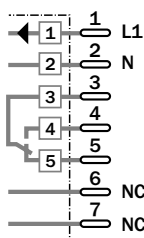
4-pin, M 12



7-pin



7-pin



Accessories	page
Cable receptacles	496
Mounting brackets	510

Technical data		WT 36-	N 410	P 410	N 710	P 710	R 710
Scanning distance	200...800 mm, adjustable						
Light source¹⁾, light type	LED, infrared light						
Light spot diameter	Approx. 15 mm at 800 mm						
Supply voltage V_S	10...30 V DC ²⁾						
	24...240 V UC (+ 10 % / - 25 %)						
Ripple ³⁾	$\leq 5 V_{SS}$						
Current consumption ⁴⁾	≤ 50 mA						
Power consumption	< 2 VA						
Switching outputs	PNP, Q and \bar{Q}						
	NPN, Q and \bar{Q}						
	SPDT, isolated ⁵⁾						
Output current I_A max.	200 mA						
Max. switching voltage	AC: 250 V / DC: 120 V						
Switching current	4 A / 240 V AC or 24 V DC						
Max. switching capacity	AC: 1000 VA / DC: 100 W						
Response time ⁶⁾	2 ms						
	6 ms						
Max. switching frequency ⁷⁾	250/s						
	10/s						
Test input "TE", sender OFF	PNP: Test input to 0 V						
	NPN: Test input to V_S						
Connection types	Plug						
VDE protection class⁸⁾	<input type="checkbox"/>						
Circuit protection⁹⁾	A, B, C						
	A, C						
Enclosure rating	IP 65						
	IP 67						
Ambient temperature T_A	Operation - 40 °C...+ 55 °C						
	Operation - 25 °C...+ 55 °C						
	Storage - 25 °C...+ 75 °C						
Weight	Approx. 200 g						
Housing material	Glass-fibre-reinforced plastic						

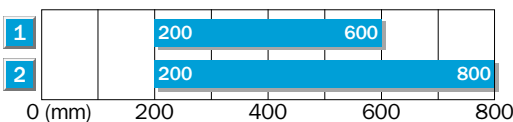
- 1) Average service life 100,000 h at $T_A = + 25$ °C
- 2) Limit values
- 3) May not exceed or fall short of V_S tolerances

- 4) Without load
- 5) Provide suitable spark suppression for inductive or capacitive loads

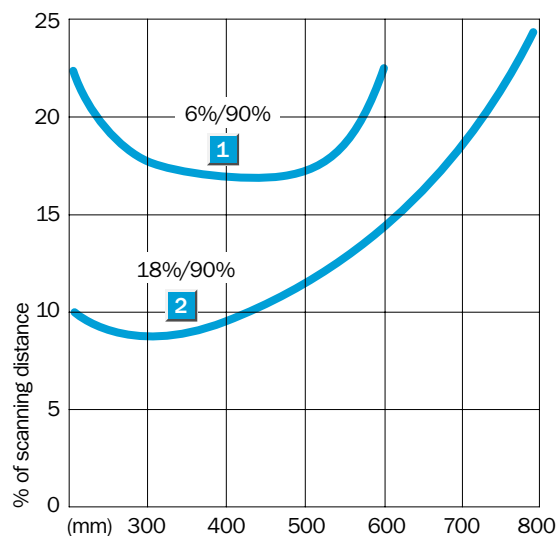
- 6) Signal transit time with resistive load
- 7) With light/dark ratio 1:1
- 8) Reference voltage 50 V DC, 250 V AC

- 9) A = V_S connections reverse-polarity protected
- B = Output Q_N and Q_P short-circuit protected
- C = Interference pulse suppression

Scanning distance



- 1 Scanning distance on black, 6 % remission
- 2 Scanning distance on grey, 18 % remission



Order information

Type	Part no.
WT 36-N 410	1 011 109
WT 36-P 410	1 011 108
WT 36-N 710	1 006 370
WT 36-P 710	1 006 047
WT 36-R 710	1 005 927