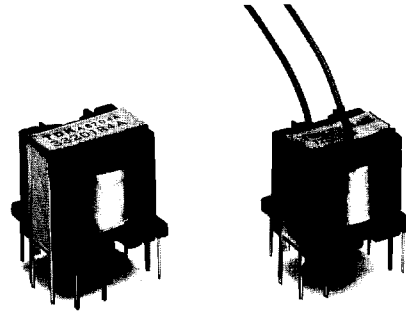
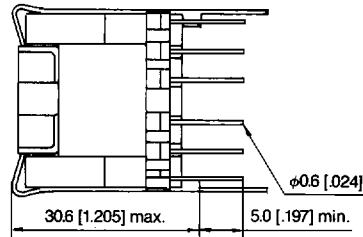
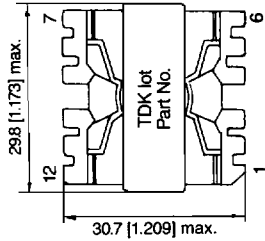


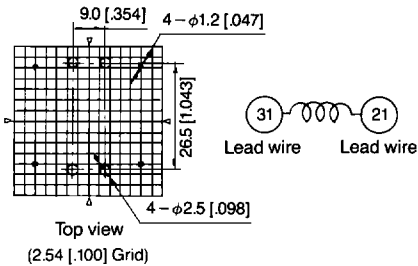
PQ26/25 CORE TYPE SHAPES AND DIMENSIONS

Lead form A, B, D

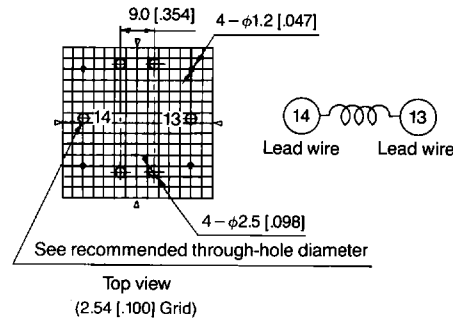


PIN CONFIGURATION

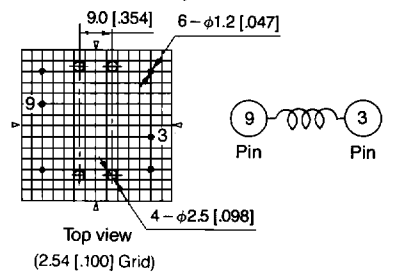
A (Lead terminal facing up)



B (Lead terminal facing down)



D (Pin terminal)



Dimensions in mm [inches]

Part No.	Inductance (μH) $\pm 20\%$	Rated current (A)	Unsaturated current (A) max.	DC resistance (m Ω) max.	Lead wire dia. (mm) [inches] typ.	Recommended through-hole diameter (mm) [inches]
PQ26/25-150A22RA	15	16.0	22.0	6.1	0.7 [.028] \times 5	3.0 [.118]
PQ26/25-220B18RA	22	14.0	18.0	8.6	1.4 [.055]	2.0 [.079]
PQ26/25-270B16RA	27	13.0	16.0	9.3	1.4 [.055]	2.0 [.079]
PQ26/25-330B15RA	33	12.0	15.0	10.8	1.4 [.055]	2.0 [.079]
PQ26/25-390B13RA	39	12.0	13.0	10.8	1.4 [.055]	2.0 [.079]
PQ26/25-470B12RA	47	10.0	12.0	15.6	1.3 [.051]	2.0 [.079]
PQ26/25-560B11RA	56	9.1	11.0	18.8	1.2 [.047]	1.5 [.059]
PQ26/25-680B10RA	68	8.2	10.0	23.2	1.1 [.043]	1.5 [.059]
PQ26/25-820B9R6A	82	6.8	9.6	33.7	0.95 [.037]	1.2 [.047]
PQ26/25-101B8R2A	100	6.2	8.2	40.6	0.9 [.035]	1.2 [.047]
PQ26/25-121B7R5A	120	5.9	7.5	44.8	0.9 [.035]	1.2 [.047]
PQ26/25-151B6R8A	150	5.6	6.8	49.7	0.9 [.035]	1.2 [.047]
PQ26/25-181B6R2A	180	5.4	6.2	53.5	0.9 [.035]	1.2 [.047]
PQ26/25-221B5R6A	220	5.1	5.6	60.0	0.9 [.035]	1.2 [.047]
PQ26/25-271B5R1A	270	4.3	5.1	84.4	0.8 [.031]	1.2 [.047]
PQ26/25-331B4R7A	330	3.6	4.7	120	0.75 [.030]	1.0 [.039]
PQ26/25-391B4R3A	390	3.3	4.3	143	0.7 [.028]	1.0 [.039]
PQ26/25-471B3R9A	470	3.3	3.9	143	0.7 [.028]	1.0 [.039]
PQ26/25-561B3R6A	560	3.0	3.6	173	0.7 [.028]	1.0 [.039]
PQ26/25-681B3R3A	680	3.0	3.3	173	0.7 [.028]	1.0 [.039]
PQ26/25-821B3R0A	820	2.4	3.0	271	0.65 [.026]	1.0 [.039]
PQ26/25-102B2R7A	1000	2.0	2.7	390	0.55 [.022]	0.8 [.031]
PQ26/25-122B2R4A	1200	2.0	2.4	390	0.55 [.022]	0.8 [.031]
PQ26/25-152B2R2A	1500	1.8	2.2	481	0.55 [.022]	0.8 [.031]
PQ26/25-182B2R0A	1800	1.6	2.0	609	0.5 [.020]	0.8 [.031]
PQ26/25-222D1R8A	2200	1.4	1.8	796	0.45 [.018]	Pin terminal
PQ26/25-272D1R6A	2700	1.3	1.6	923	0.45 [.018]	Pin terminal
PQ26/25-332D1R4A	3300	1.3	1.4	923	0.45 [.018]	Pin terminal