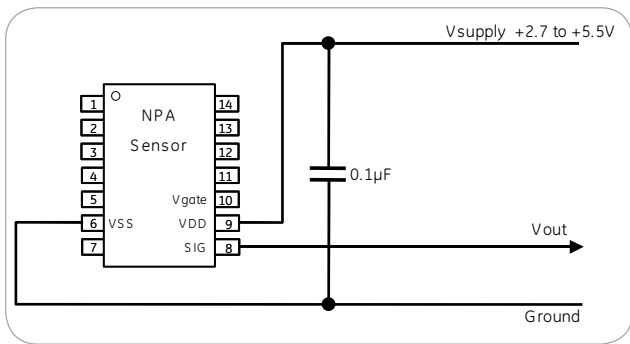


# Output Option: Amplified Analog

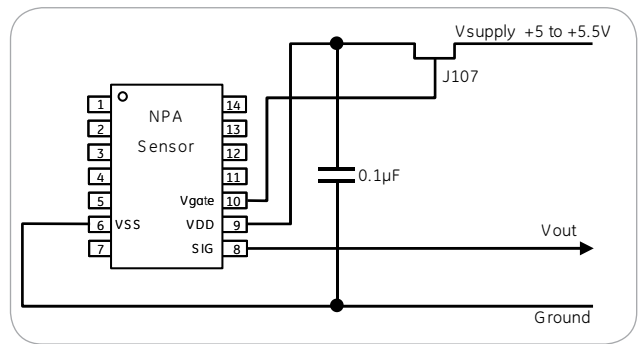
Parameter	Units	Min	Max
<b>Analog Performance Parameters 5 volt Excitation</b>			
Offset	Volts	0.44	0.56
Span (Absolute/Gauge)	Volts		4
<b>Analog Performance Parameters 3.3 volt Excitation</b>			
Offset	Volts	0.46	0.54
Span (Absolute/Gauge)	Volts		2.5

## Typical Analog Circuits

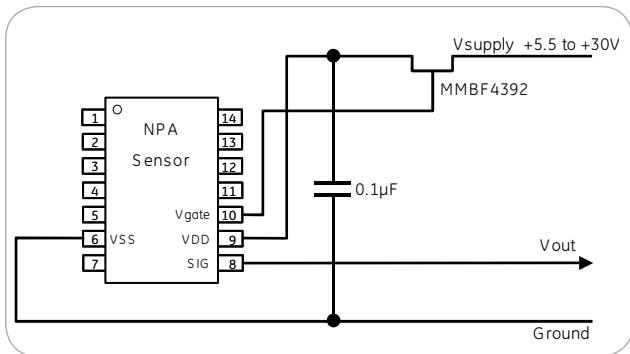
Circuit layout same as "Ratiometric Voltage Output"



Ratiometric Voltage Output - Standard NPA



Ratiometric Voltage Output with Over-Voltage Protection - Request Required



Absolute Voltage Output - Request Required

## NPA Pinout

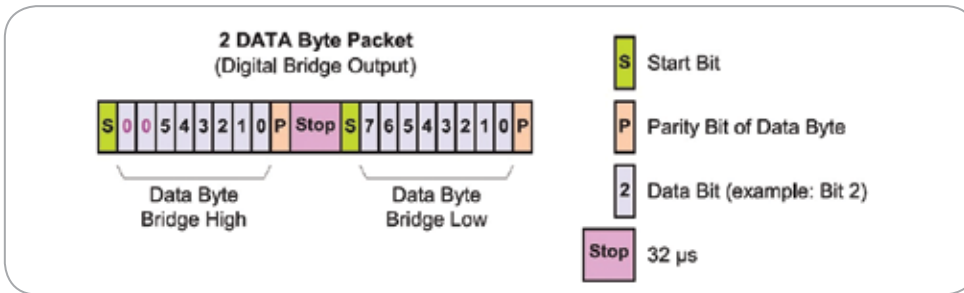
Pin #	Amplified Analog	Function Notes
1	--	
2	--	
3	NC	Do Not Connect
4	NC	Do Not Connect
5	--	
6	VSS	Ground Supply
7	--	
8	SIG	Analog Out, Calibration Interface
9	VDD	Supply Voltage
10	--	
11	NC	Do Not Connect
12	NC	Do Not Connect
13	--	
14	--	

# Output Option: Digital Serial (14 bit)

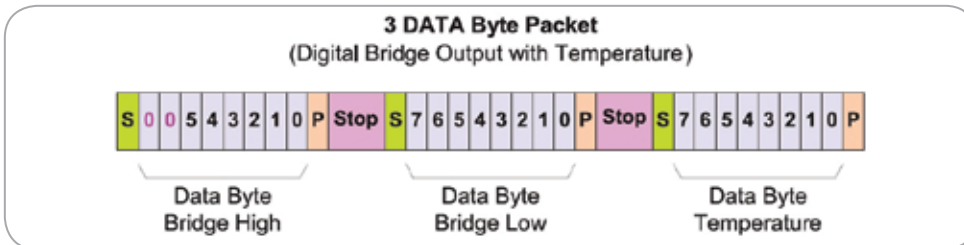
Parameter	Units	Min	Typ	Max	Notes
<b>Digital Performance</b>					
Resolution	ADC		14bit		16383 steps
Sampling Rate	kHz		1		

## Digital Output Options

Streaming serial output is a 14 bit number proportional to the full scale.



Zacwire—Digital Output (NOM) Bridge Readings



Zacwire—Digital Output (NOM) Bridge Readings with Temperature Option

## NPA Pinout

Pin #	Amplified Digital	Serial	Function Notes
1	--		
2	--		
3	NC		Do Not Connect
4	NC		Do Not Connect
5	--		
6	VSS		Ground Supply
7	--		
8	SIG		Digital Out, Calibration Interface
9	VDD		Supply Voltage
10	--		
11	NC		Do Not Connect
12	NC		Do Not Connect
13	--		
14	--		