

Power relays 1 pole for direct PCB or socket mount

Type 40.31
- 1 CO 12 A (3.5 mm pin pitch)

Type 40.61
- 1 CO 16 A (5.0 mm pin pitch)

- Pin length 3.5 mm for PCB mount
- Pin length 5.3 mm for Plug-in mount
- DC coils (650 mW or 500 mW)
- Cadmium-free contact material available
- 8 mm Creepage and Clearance, 6 kV (1.2/50µs) between coil and contact
- Meets EN 60335-1 glow wire requirements
- 95 series sockets for PCB or 35 mm rail mounting (EN 60715) with Screw, Screwless or Push-in terminals
- Coil Indication and EMC suppression modules 99 series and Timer module 86.30 options
- Environmental protection:
RT II - flux proof (Standard)
RT III - wash tight (Option)

* mounted on sockets ≤ 10 A

For outline drawing see page 10

Contact specification

| | | | |
|---|-----------|-------------|-------------|
| Contact configuration | | 1 CO (SPDT) | 1 CO (SPDT) |
| Rated current/Maximum peak current | A | 12*/20 | 16/30 |
| Rated voltage/Maximum switching voltage | V AC | 250/400 | 250/400 |
| Rated load AC1 | VA | 3000 | 4000 |
| Rated load AC15 (230 V AC) | VA | 1000 | 1000 |
| Single phase motor rating (230 V AC) | kW | 0.55 | 0.55 |
| Breaking capacity DC1: 30/110/220 V | A | 12/0.3/0.12 | 16/0.3/0.12 |
| Minimum switching load | mW (V/mA) | 300 (5/5) | 500 (10/5) |
| Standard contact material | | AgNi | AgCdO |

Coil specification

| | | | |
|-----------------------------------|-----------------|---|--|
| Nominal voltage (U _N) | V AC (50/60 Hz) | — | — |
| | V DC | 12 - 24 | 12 - 24 |
| Rated power DC/sensitive DC | W | 0.65/0.5 | 0.65/0.5 |
| Operating range | AC | — | — |
| | DC/sensitive DC | (0.73...1.5)U _N / (0.73...1.5)U _N | (0.73...1.5)U _N / (0.8...1.5)U _N |
| Holding voltage | DC | 0.4 U _N | 0.4 U _N |
| Must drop-out voltage | DC | 0.1 U _N | 0.1 U _N |

Technical data

| | | | |
|--|--------|-----------------------|-----------------------|
| Mechanical life | cycles | 10 · 10 ⁶ | 10 · 10 ⁶ |
| Electrical life at rated load AC1 | cycles | 200 · 10 ³ | 100 · 10 ³ |
| Operate/release time | ms | 7/3 (10/3 sensitive) | 7/3 (10/3 sensitive) |
| Insulation between coil and contacts (1.2/50 µs) | kV | 6 (8 mm) | 6 (8 mm) |
| Dielectric strength between open contacts | V AC | 1000 | 1000 |
| Ambient temperature range | °C | -40...+85 | -40...+85 |
| Environmental protection | | RT II** | RT II** |

Approvals (according to type)



** See general technical information "Guidelines for automatic flow solder processes" page II.

| | |
|---|--|
| 40.31 | 40.61 |
| | |
| <ul style="list-style-type: none"> • 1 CO 12 A on PCB, 10 A with socket • 3.5 mm pin pitch • PCB or 95 Series socket mount | <ul style="list-style-type: none"> • 1 CO 16 A • 5.0 mm pin pitch • PCB or 95 Series socket mount |
| <p>Copper side view Pin length 3.5 mm for PCB only Pin length 5.3 mm for PCB or sockets See ordering information</p> | <p>Copper side view Pin length 3.5 mm for PCB only Pin length 5.3 mm for PCB or sockets See ordering information</p> |

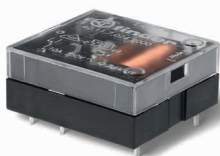
PCB relay

Type 40.11

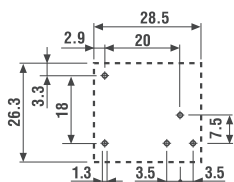
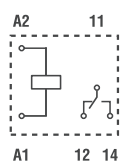
- 1 CO 10 A - flat pack

- DC (sensitive) coils
- Cadmium-free contact material available
- 8 mm Creepage and Clearance, 6 kV (1.2/50µs) between coil and contact

40.11



- 1 CO 10 A
- PCB mount 12.7 mm high



Copper side view

Pin length 3.5 mm for PCB only

FOR UL RATINGS SEE:

"General technical information" page V

For outline drawing see page 10

Contact specification

| | | |
|---|-----------|-------------|
| Contact configuration | | 1 CO (SPDT) |
| Rated current/Maximum peak current | A | 10/20 |
| Rated voltage/ Maximum switching voltage | V AC | 250/400 |
| Rated load AC1 | VA | 2500 |
| Rated load AC15 (230 V AC) | VA | 500 |
| Single phase motor rating (230 V AC) | kW | 0.37 |
| Breaking capacity DC1: 30/110/220 V | A | 10/0.3/0.12 |
| Minimum switching load | mW (V/mA) | 300 (5/5) |
| Standard contact material | | AgCdO |

Coil specification

| | | |
|-----------------------------------|-----------------|-------------------------------|
| Nominal voltage (U _N) | V AC (50/60 Hz) | — |
| | V DC | 6 - 12 - 24 - 48 - 60 |
| Rated power AC/DC/sens. DC | VA (50 Hz)/W/W | —/—/0.5 |
| Operating range | AC | — |
| | DC/sens. DC | —/(0.73...1.75)U _N |
| Holding voltage | AC/DC | —/0.4 U _N |
| Must drop-out voltage | AC/DC | —/0.1 U _N |

Technical data

| | | |
|---|--------|-----------------------|
| Mechanical life | cycles | 20 · 10 ⁶ |
| Electrical life at rated load AC1 | cycles | 200 · 10 ³ |
| Operate/release time | ms | 12/4 |
| Insulation between coil and contacts (1.2/50 µs) | kV | 6 (8 mm) |
| Dielectric strength between open contacts | V AC | 1000 |
| Ambient temperature range | °C | -40...+70 |
| Environmental protection | | RT I |

Approvals (according to type)

