



94.04

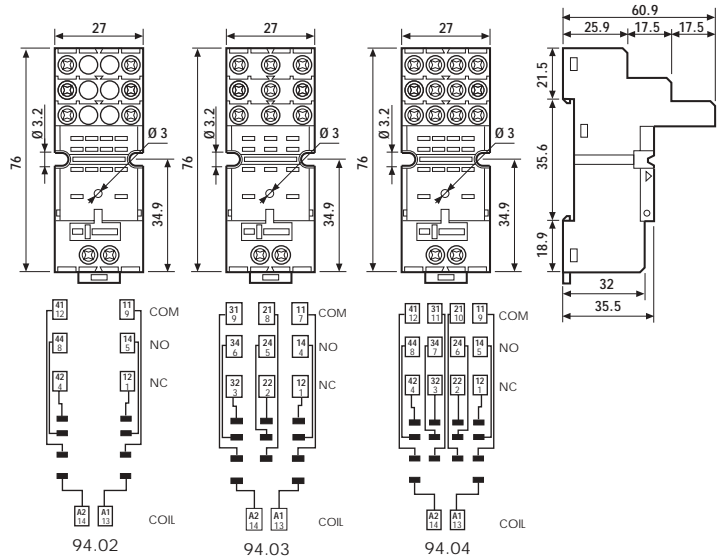
Approvals
(according to type):



- RATED VALUES: 10 A - 250 V
- DIELECTRIC STRENGTH: ≥ 2 kV AC
- PROTECTION CATEGORY: IP 20
- AMBIENT TEMPERATURE: (-40...+70)°C
- SCREW TORQUE: 0.5 Nm
- WIRE STRIP LENGTH: 8 mm
- MAX WIRE SIZE:

Relay type	55.32		55.33		55.32, 55.34	
Colour	BLUE	BLACK	BLUE	BLACK	BLUE	BLACK
Clamp terminal socket: panel or 35 mm rail (EN 50022) mount retaining clip 094.71 supplied with socket packaging code SMA	94.02	94.02.0	94.03	94.03.0	94.04	94.04.0
Metal retaining clip	094.71					
Plastic retaining and release clip	094.01					
6-way jumper link for 94.02, 94.03 and 94.04 sockets	094.06	094.06.0	094.06	094.06.0	094.06	094.06.0
Identification tag	094.00.4					
Modules (see table below)	99.02					
Timer modules	86.10, 86.20					
Sheet of marker tags for retaining and release clip 094.01	060.72					

	solid wire	stranded wire
mm ²	1x6 / 2x2.5	1x4 / 2x2.5
AWG	1x10 / 2x14	1x12 / 2x14



094.01

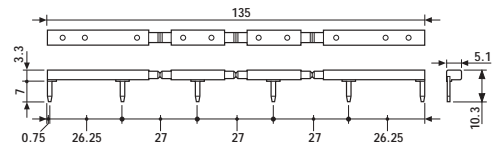
FOR 94.02, 94.03 AND 94.04 SOCKETS:



094.06

6-way jumper link	094.06
--------------------------	--------

- RATED VALUES: 10 A - 250 V



86.10

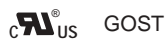
86 Series Module Timers (see technical data pages 126/131)	BLUE
Mono-function: 12...24 V AC/DC; function AI; (1.5s...60min)	86.10.0.024.0000
Mono-function: 12...24 V AC/DC; function DI; (1.5s...60min)	86.20.0.024.0000



99.02

99.02 coil indication and EMC suppression modules (see technical data page 179)		BLUE*
Diode** (+A1, standard polarity)	(6...220) V DC	99.02.3.000.00
Diode (+A2, non standard polarity)	(6...220) V DC	99.02.2.000.00
LED	(6...24) V DC/AC	99.02.0.024.59
LED	(28...60) V DC/AC	99.02.0.060.59
LED	(110...240) V DC/AC	99.02.0.230.59
LED + Diode** (+A1, standard polarity)	(6...24) V DC	99.02.9.024.99
LED + Diode** (+A1, standard polarity)	(28...60) V DC	99.02.9.060.99
LED + Diode** (+A1, standard polarity)	(110...220) V DC	99.02.9.220.99
LED + Diode (+A2, non standard polarity)	(6...24) V DC	99.02.9.024.79
LED + Diode (+A2, non standard polarity)	(28...60) V DC	99.02.9.060.79
LED + Diode (+A2, non standard polarity)	(110...220) V DC	99.02.9.220.79
LED + Varistor	(6...24) V DC/AC	99.02.0.024.98
LED + Varistor	(28...60) V DC/AC	99.02.0.060.98
LED + Varistor	(110...240) V DC/AC	99.02.0.230.98
RC circuit	(6...24) V DC/AC	99.02.0.024.09
RC circuit	(28...60) V DC/AC	99.02.0.060.09
RC circuit	(110...240) V DC/AC	99.02.0.230.09
Residual current by-pass (62 kΩ/1W)	(110...240) V AC	99.02.8.230.07

Approvals
(according to type):



* Modules in Black housing are available on request.

**For DC supply, apply the positive to terminal A1.



94.74

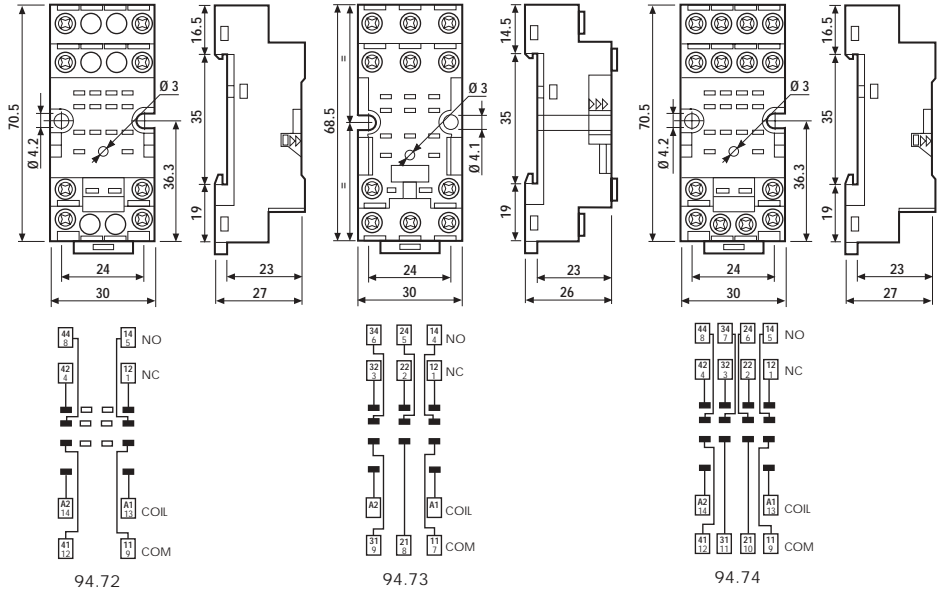
Relay type	55.32		55.33		55.32, 55.34	
	BLUE	BLACK	BLUE	BLACK	BLUE	BLACK
Colour	BLUE	BLACK	BLUE	BLACK	BLUE	BLACK
Screw terminal socket: panel or 35 mm rail (EN 50022) mount retaining clip 094.71 supplied with socket packaging code SMA	94.72	94.72.0	94.73	94.73.0	94.74	94.74.0
Retaining clip	094.71					
Modules (see table below)	99.01					

Approvals
(according to type):



- RATED VALUES: 10 A - 250 V
- DIELECTRIC STRENGTH: ≥ 2 kV AC
- PROTECTION CATEGORY: IP 20
- AMBIENT TEMPERATURE: (-40...+70)°C
- SCREW TORQUE: 0.5 Nm
- WIRE STRIP LENGTH: 8 mm
- MAX WIRE SIZE:

	solid wire	stranded wire
mm ²	1x2.5 / 2x1.5	1x2.5 / 2x1.5
AWG	1x14 / 2x16	1x14 / 2x16



94.82

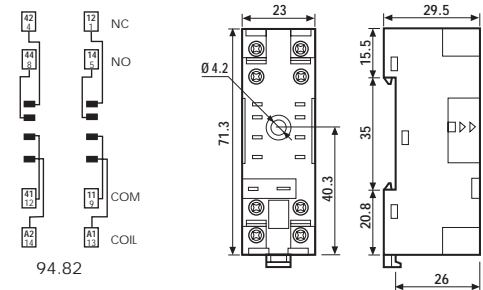
Relay type	55.32	
	BLUE	BLACK
Colour	BLUE	BLACK
Screw terminal socket: panel or 35 mm rail (EN 50022) mount retaining clip 094.71 supplied with socket packaging code SMA	94.82	94.82.0
Retaining clip	094.71	
Modules (see table below)	99.01	

Approvals
(according to type):



- RATED VALUES: 10 A - 250 V
- DIELECTRIC STRENGTH: ≥ 2 kV AC
- PROTECTION CATEGORY: IP 20
- AMBIENT TEMPERATURE: (-40...+70)°C
- SCREW TORQUE: 0.5 Nm
- WIRE STRIP LENGTH: 9 mm
- MAX WIRE SIZE:

	solid wire	stranded wire
mm ²	1x2.5 / 2x1.5	1x2.5 / 2x1.5
AWG	1x14 / 2x16	1x14 / 2x16



FOR 94.72, 94.73, 94.74 AND 94.82 SOCKETS:



99.01

Approvals
(according to type):

GOST

* Modules in Black housing are available on request.

** For DC supply, apply the positive to terminal A1.

Green LED is standard. Red LED available on request.

99.01 coil indication and EMC suppression modules (see technical data pag. 179)			BLUE*
Diode** (+A1, standard polarity)	(6...220) V DC		99.01.3.000.00
Diode (+A2, non standard polarity)	(6...220) V DC		99.01.2.000.00
LED	(6...24) V DC/AC		99.01.0.024.59
LED	(28...60) V DC/AC		99.01.0.060.59
LED	(110...240) V DC/AC		99.01.0.230.59
LED + Diode** (+A1, standard polarity)	(6...24) V DC		99.01.9.024.99
LED + Diode** (+A1, standard polarity)	(28...60) V DC		99.01.9.060.99
LED + Diode** (+A1, standard polarity)	(110...220) V DC		99.01.9.220.99
LED + Diode (+A2, non standard polarity)	(6...24) V DC		99.01.9.024.79
LED + Diode (+A2, non standard polarity)	(28...60) V DC		99.01.9.060.79
LED + Diode (+A2, non standard polarity)	(110...220) V DC		99.01.9.220.79
LED + Varistor	(6...24) V DC/AC		99.01.0.024.98
LED + Varistor	(28...60) V DC/AC		99.01.0.060.98
LED + Varistor	(110...240) V DC/AC		99.01.0.230.98
RC circuit	(6...24) V DC/AC		99.01.0.024.09
RC circuit	(28...60) V DC/AC		99.01.0.060.09
RC circuit	(110...240) V DC/AC		99.01.0.230.09
Residual current by-pass (62 kΩ/1W)	(110...240) V AC		99.01.8.230.07