

**CHARACTERISTICS OF SAFETY RELAY SOCKET**

Model	Continuous current	Dielectric strength	Insulation resistance
P7S-14□	6 A	2000 VAC for 1 min. between terminals	1000 MΩ min. (See note.)

Note: Measurement conditions: Measurement of the same points as for the dielectric strength at 500 VDC.

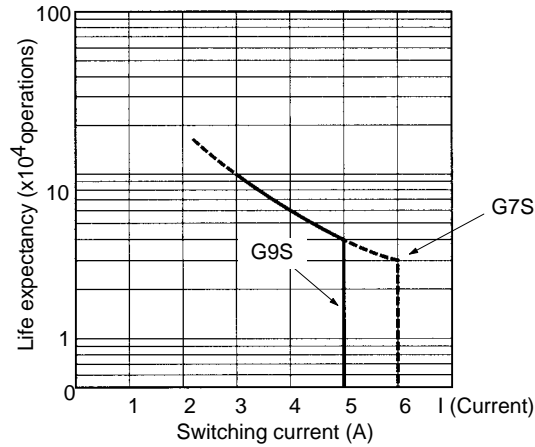
**APPROVED STANDARDS**

VDE0435 (Electrical Relays); Approved by VDE  
 IEC255 (Electrical Relays); Approved by VDE  
 prEN50205 (Electrical Relays); Approved by VDE  
 UL508 (Industrial Control Device)  
 CSA22.2 No.14 (Industrial Control Device)

**Engineering Data**

**ELECTRICAL LIFE EXPECTANCY**

(240 VAC;  $\cos\phi=0.4$ ,  $\cos\phi=1$ )

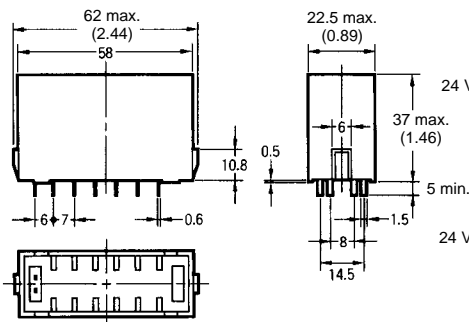
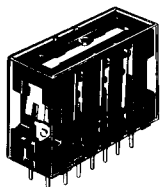


**Dimensions**

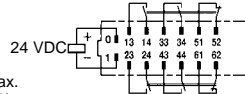
Unit: mm (inch)

**SAFETY RELAYS**

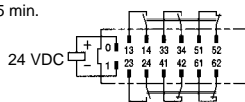
G7S-4A2B  
 G7S-3A3B



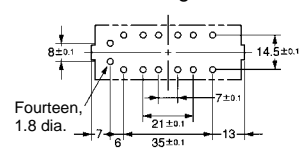
Terminal Installation/Internal Connection Diagram (Bottom View) G7S-4A2B



G7S-3A3B

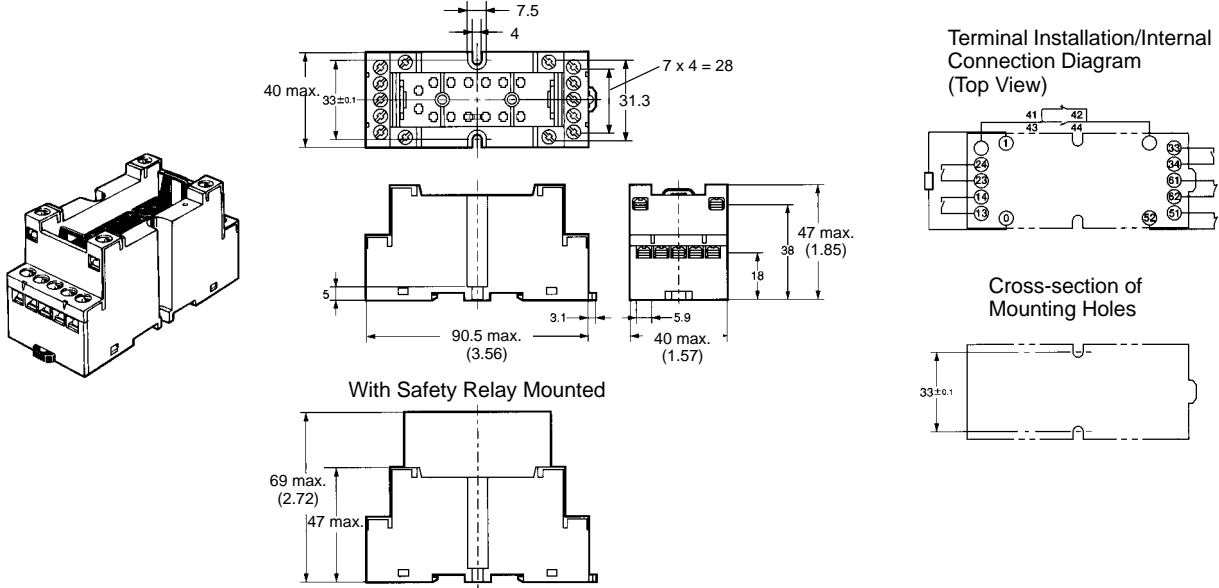


Cross-section of Mounting Holes



■ SAFETY RELAY SOCKETS

P7S-14F DIN Rail-mounting Socket or Screw Mounting



P7S-14A Panel-mounting Socket (Solder Terminals)

