

1 & 2 Pole - Low profile (15.7 mm height)
41.31 - 1 Pole 12 A (3.5 mm pin pitch)
41.52 - 2 Pole 8 A (5 mm pin pitch)
41.61 - 1 Pole 16 A (5 mm pin pitch)

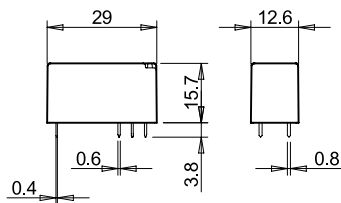
PCB mount

- direct or via PCB socket

35 mm rail mount

- via screw and screwless sockets

- AC and DC coils
- 8 mm, 6 kV (1.2/50 μs) isolation, coil-contacts
- Cadmium Free contact materials
- Flux proof: RT II standard, (RT III option)



FOR UL RATINGS SEE:

"General technical information" page V

Contact specification

Contact configuration

1 CO (SPDT)

2 CO (DPDT)

1 CO (SPDT)

Rated current/

Maximum peak current

A

12/25

8/15

16/30

Rated voltage/

Maximum switching voltage

V AC

250/400

250/400

250/400

Rated load AC1

VA

3000

2000

4000

Rated load AC15 (230 V AC)

VA

600

400

750

Single phase motor rating (230 V AC)

kW

0.5

0.3

0.5

Breaking capacity DC1: 30/110/220 V

A

12/0.3/0.12

8/0.3/0.12

16/0.3/0.12

Minimum switching load

mW (V/mA)

300 (5/5)

300 (5/5)

300 (5/5)

Standard contact material

AgNi

AgNi

AgNi

Coil specification

Nominal voltage (U_N)

V AC (50/60 Hz)

24 - 230

24 - 230

24 - 230

V DC

5 - 6 - 12 - 24 - 48 - 60 - 110

5 - 6 - 12 - 24 - 48 - 60 - 110

5 - 6 - 12 - 24 - 48 - 60 - 110

Rated power AC/DC

VA (50 Hz)/W

0.75/0.4

0.75/0.4

0.75/0.4

Operating range

AC

(0.8...1.1)U_N

(0.8...1.1)U_N

(0.8...1.1)U_N

DC

(0.7...1.5)U_N

(0.7...1.5)U_N

(0.7...1.5)U_N

Holding voltage

AC/DC

0.8/0.4 U_N

0.8/0.4 U_N

0.8/0.4 U_N

Must drop-out voltage

AC/DC

0.15/0.1 U_N

0.15/0.1 U_N

0.15/0.1 U_N

Technical data

Mechanical life AC/DC

cycles

10 · 10⁶ / 10 · 10⁶

10 · 10⁶ / 10 · 10⁶

10 · 10⁶ / 10 · 10⁶

Electrical life at rated load AC1

cycles

60 · 10³

60 · 10³

50 · 10³

Operate/release time

ms

8/6

8/6

8/6

Insulation between coil and contacts (1.2/50 μs)

kV

6 (8 mm)

6 (8 mm)

6 (8 mm)

Dielectric strength between open contacts

V AC

1000

1000

1000

Ambient temperature range

°C

-40...+70 (AC); +85 (DC)

-40...+70 (AC); +85 (DC)

-40...+70 (AC); +85 (DC)

Environmental protection

RT II

RT II

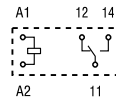
RT II

Approvals (according to type)



41.31

- 3.5 mm contact pin pitch
- 1 Pole 12 A
- PCB direct or via socket

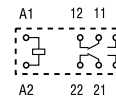


Copper side view



41.52

- 5 mm contact pin pitch
- 2 Pole 8 A
- PCB direct or via socket

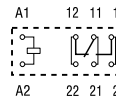


Copper side view



41.61

- 5 mm contact pin pitch
- 1 Pole 16 A
- PCB direct or via socket



Copper side view

**1 & 2 Pole - Polarized bistable, Low profile
(15.7 mm height)**
41.52 - 2 Pole 8 A (5 mm pin pitch)
41.61 - 1 Pole 16 A (5 mm pin pitch)
Printed Circuit mount

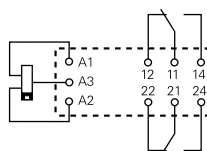
- Polarized bistable relay with 2 coils
- 10 mm, 6 kV (1.2/50 μ s) isolation, coil-contacts
- Cadmium Free contact materials
- Flux proof: RT II standard

41.52.6.xxx

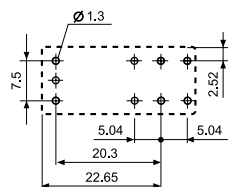

- 2 Pole, 8 A
- PCB direct mount

41.61.6.xxx

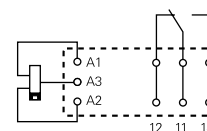

- 1 Pole, 16 A
- PCB direct mount



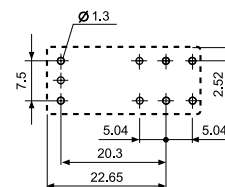
2 coil version:
A3(+) A2 (-) = Set
A3(+) A1 (-) = Reset



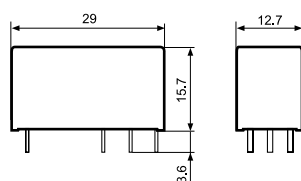
Copper side view



2 coil version:
A3(+) A2 (-) = Set
A3(+) A1 (-) = Reset



Copper side view


Contact specification

Contact configuration		2 CO (DPDT)	1 CO (SPDT)
Rated current/ Maximum peak current (I_N/I_{max})	A	8/15	16/30
Rated voltage/ Maximum switching voltage (U_N/U_{max})	V AC	250/400	250/400
Rated load AC1	VA	2000	4000
Rated load AC15 (230 V AC)	VA	350	750
Single phase motor rating (230 V AC)	kW	0.37	0.55
Breaking capacity DC1: 30/110/220 V	A	8/0.3/0.12	16/0.3/0.12
Minimum switching load	mW (V/mA)	500 (5/100)	500 (5/100)
Standard contact material		AgSnO ₂	AgSnO ₂

Coil specification

Nominal voltage (U_N)	V DC	5 - 12 - 24	5 - 12 - 24
Rated power (P_N)	W	0.65	0.65
Operating range	DC	(0.7...1.1) U_N	(0.7...1.1) U_N
Min. impulse duration	ms	20	20
Max. impulse duration	s	30	30

Technical data

Mechanical life DC	cycles	$5 \cdot 10^6$	$5 \cdot 10^6$
Electrical life at rated load AC1	cycles	$30 \cdot 10^3$	$30 \cdot 10^3$
Operate/release time	ms	10/5	10/10
Insulation between coil and contacts (1.2/50 μ s)	kV	6 (10 mm)	6 (10 mm)
Dielectric strength between open contacts	V AC	1000	1000
Ambient temperature range	°C	-40...+85	-40...+85
Environmental protection		RT II	RT II

Approvals (according to type)