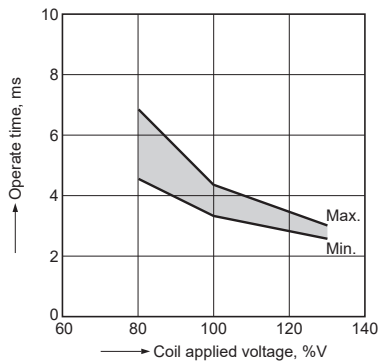
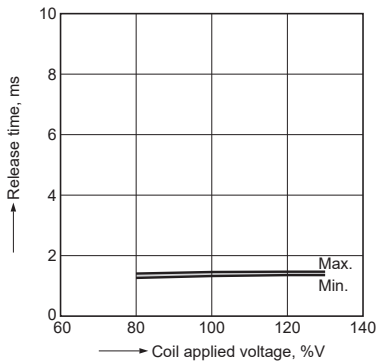


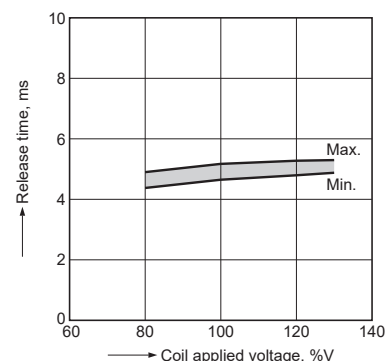
4-(1). Operate time  
Sample: ALDP112, 30 pcs.



4-(2). Release time (without diode)  
Sample: ALDP112, 30 pcs.

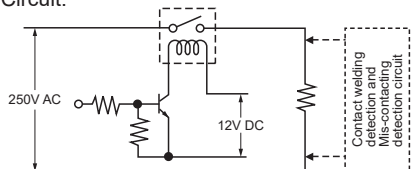


4-(3). Release time (with diode)  
Sample: ALDP112, 30 pcs.

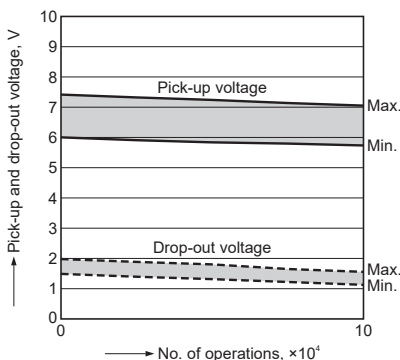


5. Electrical life test  
(5A 250V AC Resistive load)  
Sample: ALDP112, 6 pcs.  
Operation frequency: 20 times/min.  
(ON:OFF = 1.5s:1.5s)

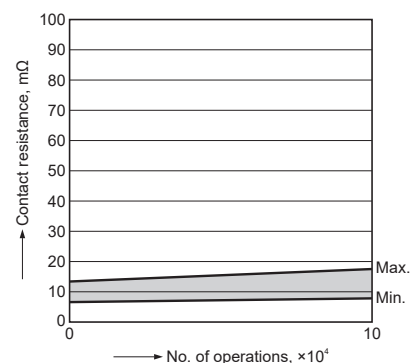
Circuit:



Change of pick-up and drop-out voltage



Change of contact resistance



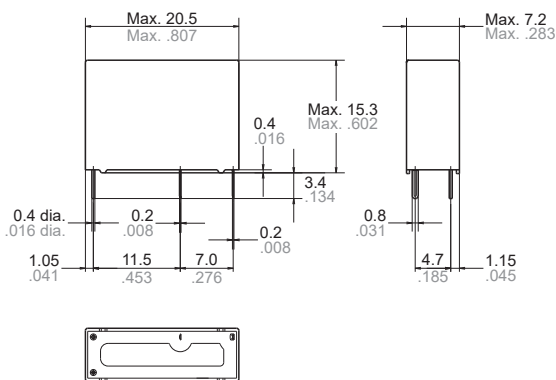
**DIMENSIONS** (mm inch)

**CAD** The CAD data of the products with a "CAD" mark can be downloaded from our Website.

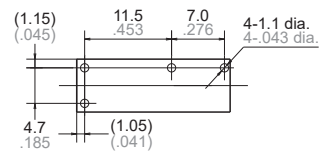
**CAD**



External dimensions

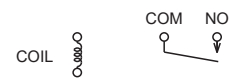


PC board pattern (Bottom view)



Tolerance:  $\pm 0.1 \pm .004$

Schematic (Bottom view)



Dimension:

Less than 1mm .039inch:  
Min. 1mm .039inch less than 3mm .118 inch:  
Min. 3mm .118 inch:

General tolerance

$\pm 0.1 \pm .004$   
 $\pm 0.2 \pm .008$   
 $\pm 0.3 \pm .012$

## SAFETY STANDARDS

UL/C-UL(Recognized)* <sup>1</sup>				VDE (Certified)				CQC			
File No.	Rating	Cycles	Temp.	File No.	Rating	Cycles	Temp.	File No.	Rating	Cycle	Temp.
E43028	5A 277V AC Resistive	10 <sup>5</sup>	85°C 185°F	40014384	5A 250V AC (cosφ =1.0)	10 <sup>5</sup>	85°C 185°F	CQC10002048611	5A 250V AC	10 <sup>4</sup>	85°C 185°F
	5A 30V DC Resistive	10 <sup>5</sup>	—		5A 30V DC (0ms)	10 <sup>4</sup>	25°C 77°F		—	—	—
	6A 277A AC	5 × 10 <sup>4</sup>	—		5A 250V AC (cosφ =1.0)* <sup>2</sup>	5 × 10 <sup>4</sup>	105°C 221°F		—	—	—
	3A 277V AC General use	12 × 10 <sup>4</sup>	85°C 185°F		—	—	—		—	—	—
	5A 277V AC Resistive* <sup>2</sup>	5 × 10 <sup>4</sup>	105°C 221°F		—	—	—		—	—	—
	Pilot duty, C300	10 <sup>5</sup>	85°C 185°F		—	—	—		—	—	—
	Pilot duty, 0.65A 277V AC (Inrush 6.5A)	10 <sup>5</sup>	85°C 185°F		—	—	—		—	—	—

Notes: \*1. CSA standard: Certified by C-UL

\*2. For Insulation Class F models only (Coil class F)

## INSULATION CHARACTERISTICS (IEC61810-1)

Item	Characteristics	
Clearance/Creepage distance (IEC61810-1)	Min. 5.5mm/5.5mm	
Category of protection (IEC61810-1)	RTIII	
GWT (IEC60335-1)	GWF1850/GWT750 2s (base)/GWT775 (cover)	
Tracking resistance (IEC60112)	PTI175	
Insulation material group	IIIa	
Over voltage category	III	III
Impulse Withstand Voltage	4 kV	6 kV
Rated voltage	250V	250V
Pollution degree	3	2
Type of insulation (Between contact and coil)	Basic Insulation	Reinforced Insulation
Type of insulation (Between open contact)	Micro Disconnection	

\*EN/IEC VDE Certified

## NOTES

**1. For cautions for use, please read "GENERAL APPLICATION GUIDELINES".**

**2. Certification**

UL/C-UL and VDE certified ratings are displayed on the packaging box. (On the relay, only the certification marks are shown and not the certified ratings. Please refer to the product specification diagrams to see what is stamped.)

**3. Maximum Applied Voltage and Temperature Rise**

Proper usage requires that the rated voltage be impressed on the coil. Note, however, that if a voltage greater than or equal to the maximum applied voltage is impressed on the coil, the coil may burn or its layers short due to the temperature rise. Furthermore, do not exceed the usable ambient temperature range listed in the catalog.

Please refer to **"the latest product specifications"** when designing your product.

- Requests to customers :  
<https://industrial.panasonic.com/ac/e/salespolicies/>