

XUK2LAKSMM12T

photo-electric laser sensor -XUK -thru beam
transmitter - Sn 30m -10..30VDC -M12



Main

Range of product	OsiSense XU
Series name	Application assembly Application material handling
Electronic sensor type	Photo-electric sensor
Sensor name	XUK
Sensor design	Compact 50 x 50
Detection system	Thru beam
Material	Plastic
Type of output signal	Discrete
Supply circuit type	DC
Wiring technique	4-wire
Electrical connection	1 male connector M12, 4 pins
Product specific application	-
Emission	Red laser thru beam (class 1)
[Sn] nominal sensing distance	25 m thru beam need receiver XUK2LAPSMM12R

Complementary

Enclosure material	ABS/PC
Lens material	PMMA
Maximum sensing distance	30 m thru beam
Add on output	Without
Add on input	Test
Status LED	1 LED (green) for supply
[Us] rated supply voltage	
Supply voltage limits	10...30 V DC
Voltage drop	<= 2.4 V (closed state)
Current consumption	<= 30 mA (no-load)
Depth	50 mm
Height	50 mm
Width	23 mm
Product weight	0.035 kg

Environment

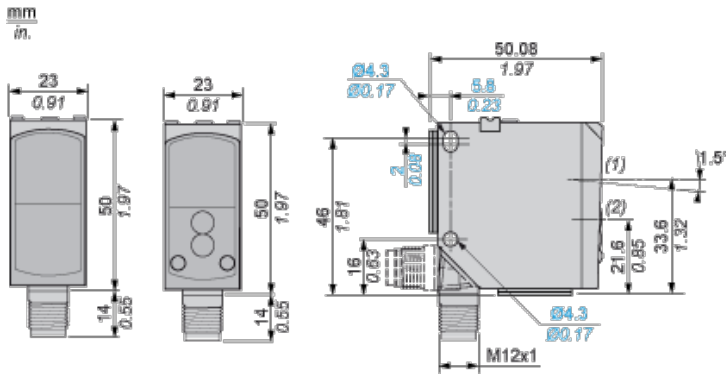
product certifications	CE CULus Ecolab
ambient air temperature for operation	-20...60 °C -20...50 °C, UL certified
ambient air temperature for storage	-20...80 °C
vibration resistance	7 gn, amplitude = +/- 1.5 mm (f = 10...55 Hz) conforming to IEC 60068-2-6
shock resistance	30 gn (duration = 11 ms) conforming to IEC 60947-5-2
IP degree of protection	IP67 conforming to IEC 60529 IP69K conforming to DIN 40050

Offer Sustainability

Sustainable offer status	Not Green Premium product
RoHS (date code: YYWW)	Will not be Compliant

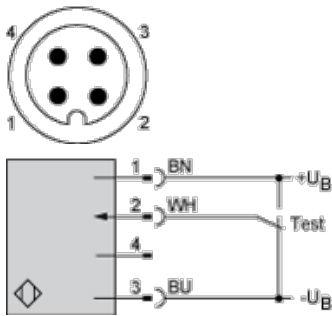
The information provided in this documentation contains general descriptions and/or technical characteristics of the performance of the products contained herein. This documentation is not intended as a substitute for and is not to be used for determining suitability or reliability of these products for specific user applications. It is the duty of any such user or integrator to perform the appropriate and complete risk analysis, evaluation and testing of the products with respect to the relevant specific application or use thereof. Neither Schneider Electric Industries SAS nor any of its affiliates or subsidiaries shall be responsible or liable for misuse of the information contained herein.

Dimensions



- (1) Receiver optical axis
- (2) Transmitter optical axis

Wiring Schemes Using M12 Connector



- 1 : (+)
- 2 : Test input (1)
- 3 : (-)
- 4 : Pin not connected

BN : Brown

WH : White

BU : Blue

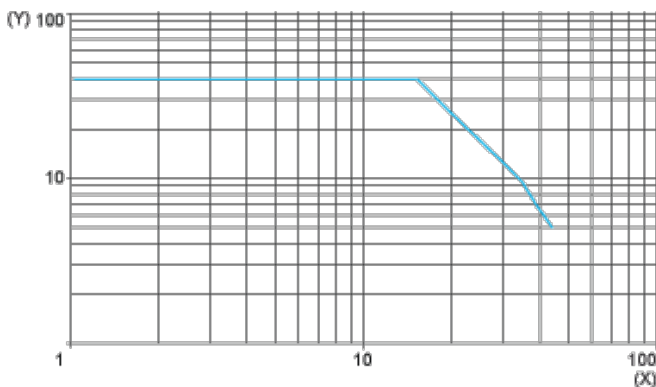
+UB : External teach

-UB : Pushbutton locking

- (1) Test input: +UB = test function (transmitter disconnected). -UB or not connected = normal operation

Curves

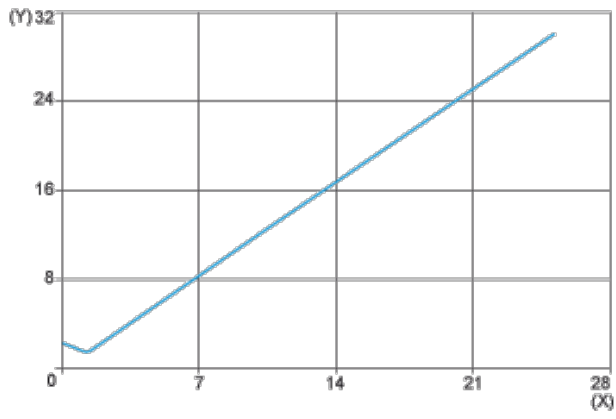
Excess Gain Curve



- (X) Distance (m)

(Y) Gain

Size of Luminous Point



(X) Distance (m)

(Y) Size (mm)