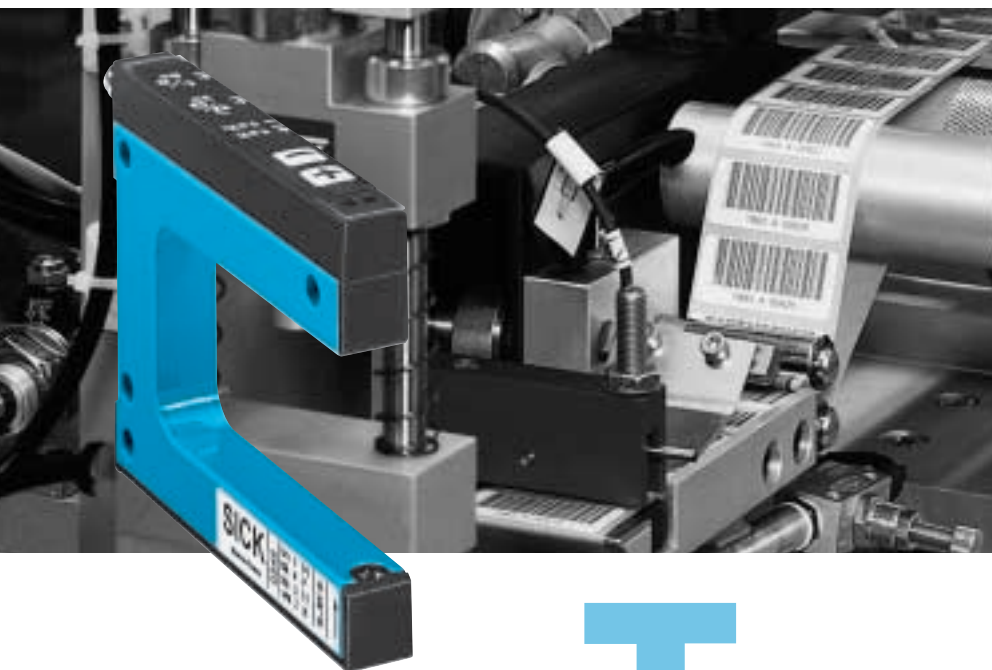
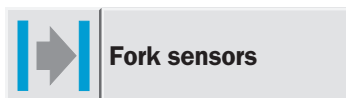


WF next: Fork sensors for a wide range of applications



- slot widths between 2 and 120 mm, slot depths of 40, 60 and 95 mm,
- manual adjustment via user-friendly keyboard,
- simple and quick adjustment via Teach-in,
- switching output PNP and NPN,
- L/D adjustable via button,
- rugged metal housing with glass optics,
- shortest response time,
- fine resolution.



The detection of labels, marks and double sheets, as well as holes and edges are typical applications for the new WF fork sensors.

A complete range of sensors with the following features is available for a variety of operating conditions:

SICK

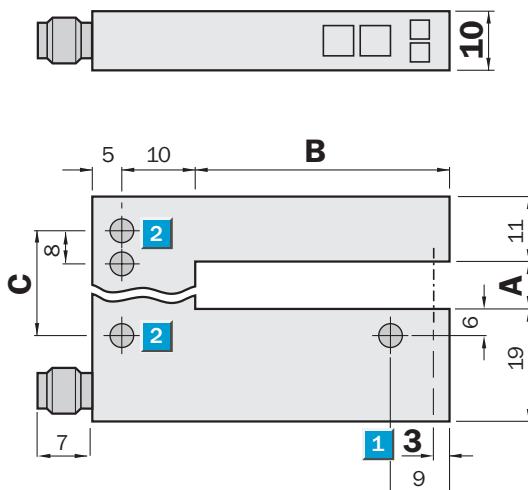
Fork width
2 ... 120 mm

Fork sensors

- Simple and accurate adjustment via “+” and “-” buttons
- PNP and NPN switching output
- Light/dark switching, adjustable
- Rugged aluminium housing

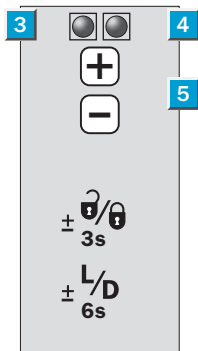
Dimensional drawing

All types



Adjustments possible

All types



- 1 Optical axis
- 2 Mounting holes, Ø 4.2 mm
- 3 Function indicator (red)
- 4 Function indicator (yellow), switching output
- 5 “+”/“-” buttons and function button

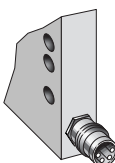
Dimensions

Dimensions (mm)	A Fork width	B Fork depth	C
WF 2	2	42/59/95	14
WF 5	5	42/59/95	14
WF 15	15	42/59/95	27
WF 30	30	42/59/95	42
WF 50	50	42/59/95	40
WF 80	80	42/59/95	70
WF 120	120	42/59/95	110

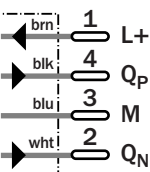


Connection types

All types



4-pin, M8



Accessories
Cables and Connectors

