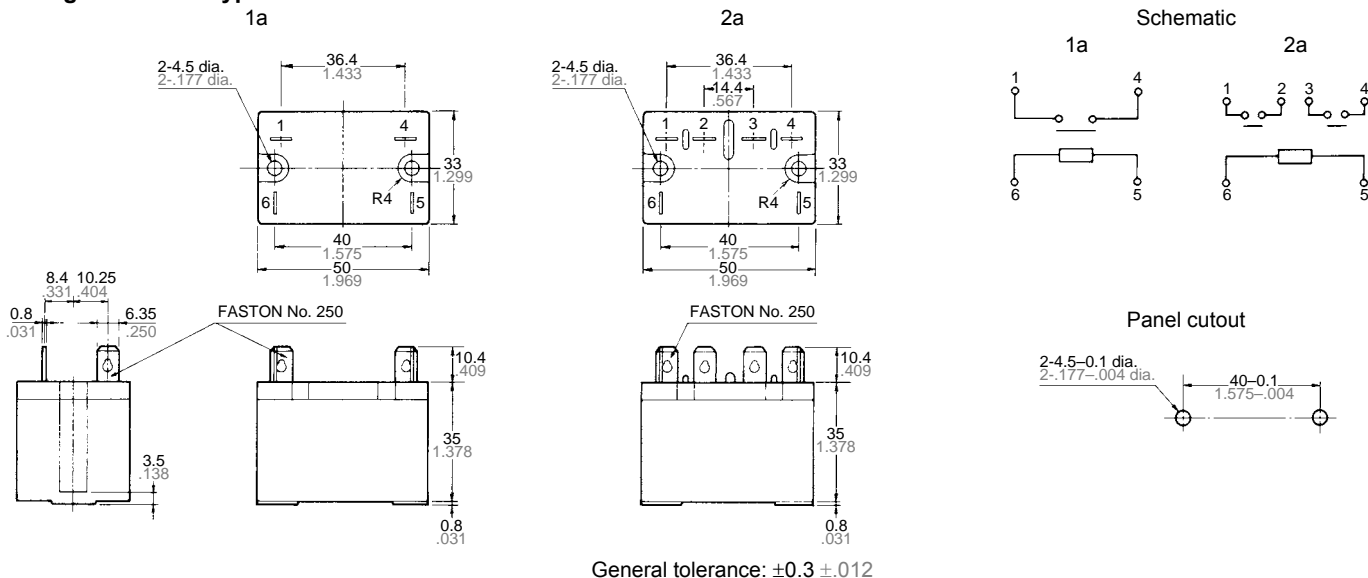


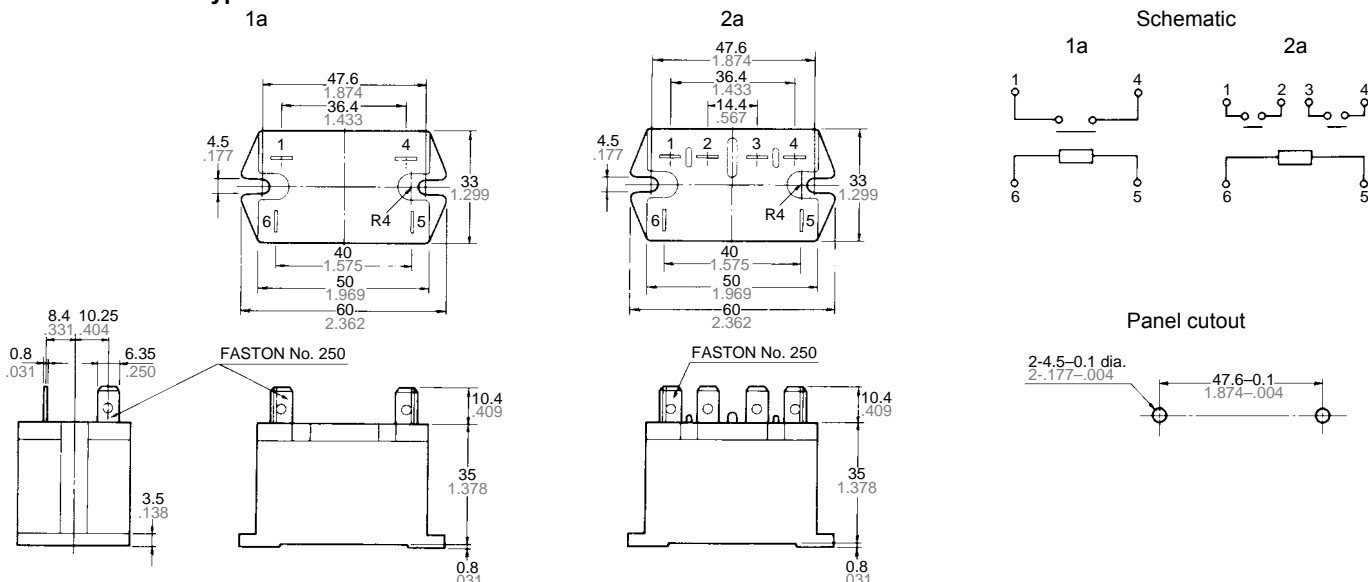
# DIMENSIONS

## 1. Plug-in terminal type



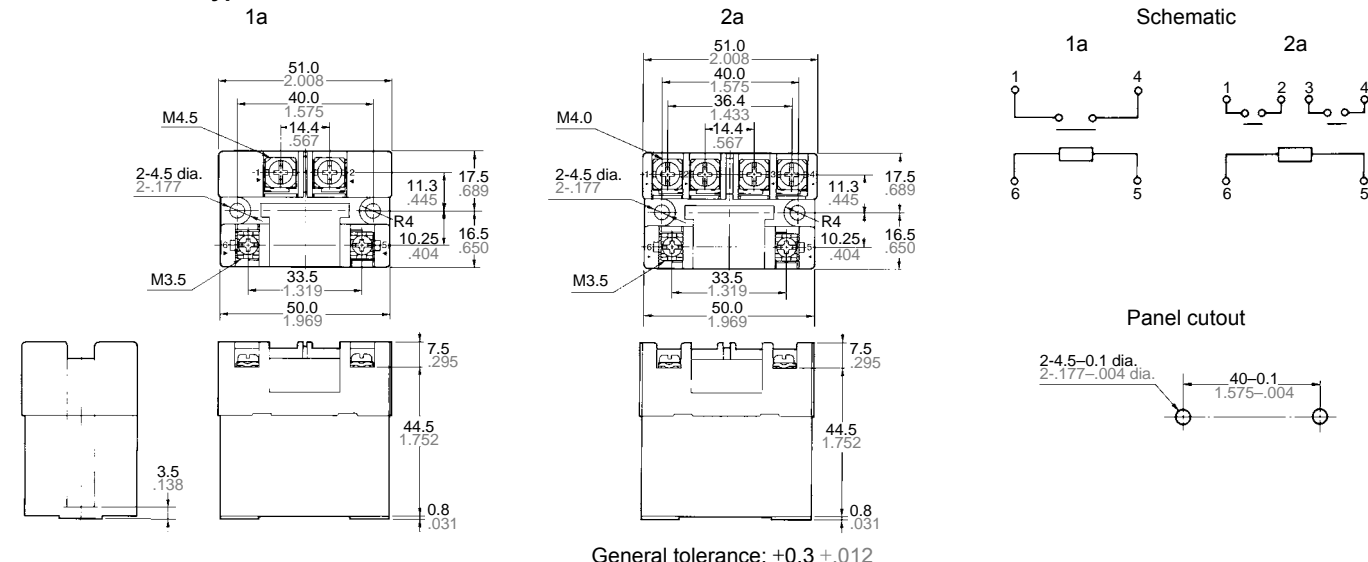
General tolerance:  $\pm 0.3 \pm .012$

## 2. NEMA terminal type



General tolerance:  $\pm 0.3 \pm .012$

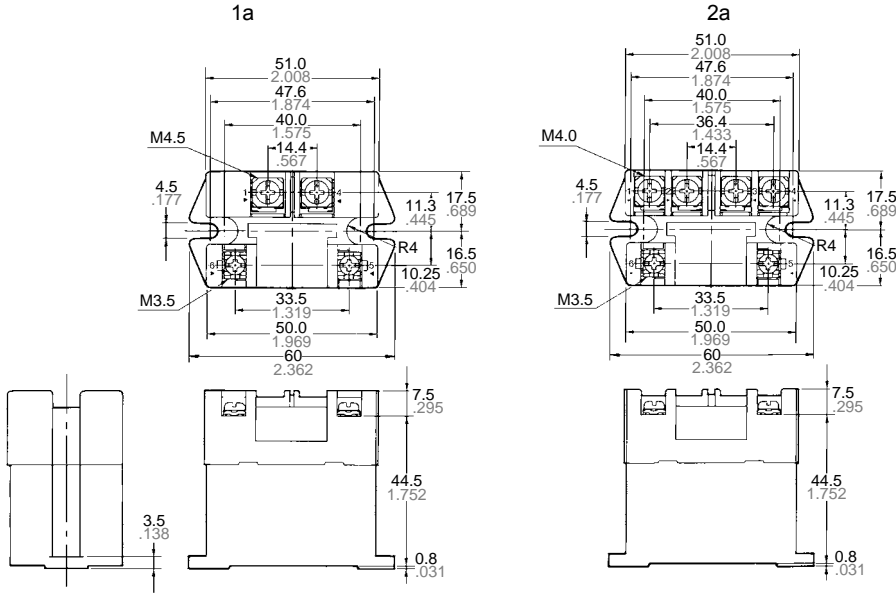
## 3. Screw terminal type



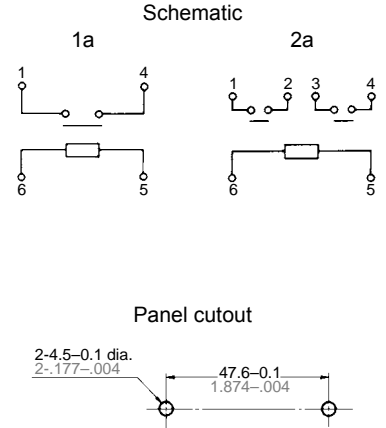
General tolerance:  $\pm 0.3 \pm .012$

4. Screw terminal type (wide pitch)

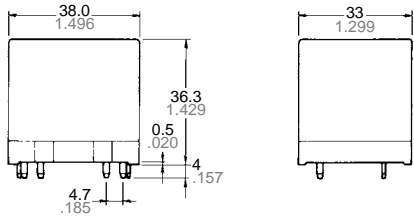
mm inch



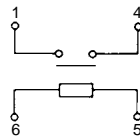
General tolerance:  $\pm 0.3 \pm .012$



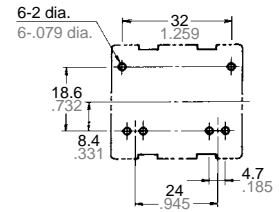
5. PC board terminal type



Schematic (Bottom view)



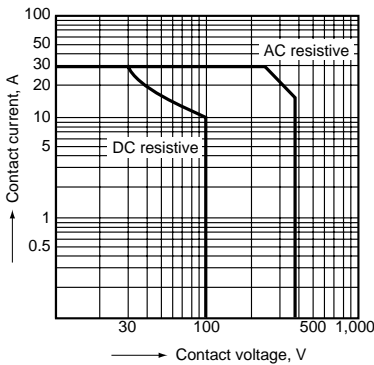
PC board pattern (Copper-side view)



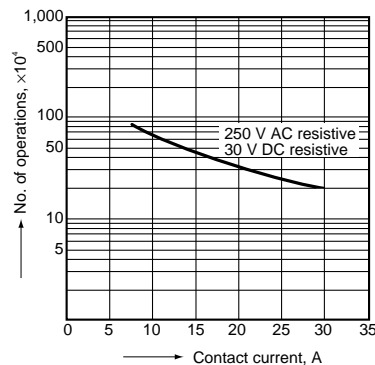
REFERENCE DATA

1 Form A Type

1. Maximum switching power

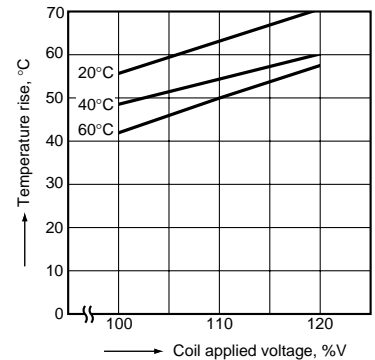


2. Life curve



3. Contact temperature rise (DC type)

Measured portion: Inside the coil  
Contact current: 30 A



4. Ambient temperature characteristics

Sample: HE1aN-AC120V, 6 pcs.

