

CDS, CDN and PON Type P and D

Specifications

Description: CSA time-delay Type D and P fuses.

Dimensions: See catalog numbers table and dimensions illustration.

Ratings:

Volts: — 250Vac (CDN and PON)
— 600Vac (CDS)

Amps: — 10-600A

IR: — 10kA minimum

Agency information: CE, CSA Certified to C22.2 No. 59.1.



Features and benefits

- Economical fuse in a variety of ratings for applications not requiring time-delay.

Typical applications

- Lighting, heating and other circuits not subject to temporary surges and where available short-circuit current are relatively low.

Basic catalog numbers

Time-Delay CSA Type “D” fuses

| Catalog numbers | Volts | Amp ratings |
|-----------------|--------|--|
| CDN* | 250Vac | 10, 12, 15, 20, 25, 30, 35, 40, 45, 50, 60, 70, 80, 90, 100, 110, 125, 150, 175, 200, 225, 250, 300, 350, 400, 450, 500, 600 |
| | | 10, 12, 15, 20, 25, 30, 35, 40, 45, 50, 60, 70, 80, 90, 100, 110, 125, 150, 175, 200, 225, 250, 300, 350, 400, 450, 500, 600 |
| CDS** | 600Vac | 10, 12, 15, 20, 25, 30, 35, 40, 45, 50, 60, 70, 80, 90, 100, 110, 125, 150, 175, 200, 225, 250, 300, 350, 400, 450, 500, 600 |
| | | 10, 12, 15, 20, 25, 30, 35, 40, 45, 50, 60, 70, 80, 90, 100, 110, 125, 150, 175, 200, 225, 250, 300, 350, 400, 450, 500, 600 |

* Below 10 amps, use FRN-R.

** Below 10 amps, use FRS-R.

One-time CSA Type “P” fuses

| Catalog number | Volts | Amp ratings |
|----------------|--------|------------------------------------|
| PON | 250Vac | 15, 20, 25, 30, 35, 40, 45, 50, 60 |

To Order

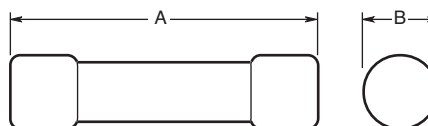
To order, specify basic catalog number and amp rating.

Example: CDN-30, CDS-110 or PON-40.

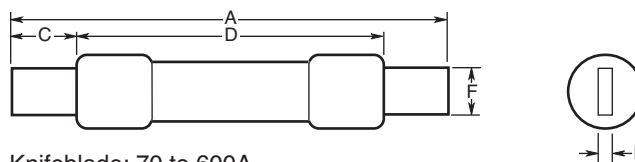
Dimensions - in (mm)

| Catalog symbol and volts | Amp rating | A Overall | B Max Diameter | C Min Blade length | D Min Barrel length | E Blade thickness | F Blade width |
|--------------------------|------------|---------------|----------------|--------------------|---------------------|-------------------|---------------|
| CDN/PON 250Vac | 1-30 | 2.0 (50.8) | 0.56 (14.3) | — | — | — | — |
| | 35-60 | 3.0 (76.2) | 0.81 (20.6) | — | — | — | — |
| | 70-100 | 5.88 (149.4) | — | 1.0 (25.4) | — | 0.13 (3.2) | 0.75 (19.1) |
| | 110-200 | 7.3 (185.4) | — | 1.38 (34.9) | 4.13 (104.8) | 0.19 (4.8) | 1.13 (28.6) |
| | 225-400 | 8.63 (219.2) | — | 1.88 (47.6) | 4.63 (117.5) | 0.25 (6.4) | 1.63 (41.3) |
| CDS 600Vac | 450-600 | 10.38 (263.7) | — | 2.25 (57.2) | 5.19 (131.8) | 0.25 (6.4) | 2 (50.8) |
| | 1-30 | 5.0 (127.0) | 0.81 (20.6) | — | — | — | — |
| | 35-60 | 5.5 (139.7) | 1.06 (27.0) | — | — | — | — |
| | 70-100 | 7.88 (200.2) | — | 1.0 (25.4) | — | 0.13 (3.2) | 0.75 (19.1) |
| | 110-200 | 9.63 (244.6) | — | 1.38 (34.9) | 6.13 (115.6) | 0.19 (4.8) | 1.13 (28.6) |
| | 225-400 | 11.63 (295.4) | — | 1.88 (47.6) | 7.13 (118.1) | 0.25 (6.4) | 1.63 (41.3) |
| | 450-600 | 13.38 (339.9) | — | 2.25 (57.2) | 8.19 (208.0) | 0.25 (6.4) | 2 (50.8) |

Dimensions



Ferrule: 1 to 60A



Knifeblade: 70 to 600A

Recommended fuse blocks

| Fuse | 1-pole | | 2-pole | | 3-pole | |
|---------|-----------|-----------|-----------|-----------|-----------|-----------|
| | 250V | 600V | 250V | 600V | 250V | 600V |
| 1-30A | HM25030-1 | HM60030-1 | HM25030-2 | HM60030-2 | HM25030-3 | HM60030-3 |
| 35-60A | HM25060-1 | HM60060-1 | HM25060-2 | HM60060-2 | HM25060-3 | HM60060-3 |
| 70-100 | HM25100-1 | HM60100-1 | HM25100-2 | HM60100-2 | HM25100-3 | HM60100-3 |
| 110-200 | HM25200-1 | HM60200-1 | HM25200-2 | HM60200-2 | HM25200-3 | HM60200-3 |
| 225-400 | HM25400-1 | HM60400-1 | HM25400-2 | HM60400-2 | HM25400-3 | HM60400-3 |
| 450-600 | HM25600-1 | HM60600-1 | HM25600-2 | HM60600-2 | HM25600-3 | HM60600-3 |

See data sheets 100289 (30-60A) and 3192 (70-600A) for terminal options.

CGL Form II Class C

Specifications

Description: Current-limiting HRCII-C fuses designed to withstand inrush currents on typical motor start-ups while offering high current limitation in the short-circuit region.

Dimensions: See dimensions illustrations.

Ratings:

Volts: — 600Vac
250Vdc (1-30A)

Amps: — 1-600A

IR: — 200kA
40kA DC

Agency information: CE, CSA Certified, C22.2 No. 106, Class 1422, File 53787.

Features and benefits

- Close sizing to loads allows using smaller and less costly switches
- Provides a higher degree of short-circuit protection
- Helps protect motors against burnout from overloads

Typical applications

- For use in circuits subject to surge currents such as those caused by motors, transformers and other inductive loads

Catalog numbers (-amps)

| | | |
|--------|---------|---------|
| CGL-1 | CGL-40 | CGL-175 |
| CGL-2 | CGL-45 | CGL-200 |
| CGL-3 | CGL-50 | CGL-225 |
| CGL-4 | CGL-60 | CGL-250 |
| CGL-6 | CGL-70 | CGL-300 |
| CGL-10 | CGL-80 | CGL-350 |
| CGL-15 | CGL-90 | CGL-400 |
| CGL-20 | CGL-100 | CGL-450 |
| CGL-25 | CGL-110 | CGL-500 |
| CGL-30 | CGL-125 | CGL-600 |
| CGL-35 | CGL-150 | |

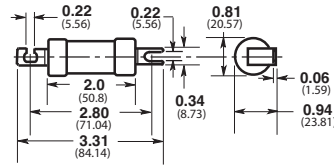
Available Red Spot fuse holders

| Fuse amps | Catalog symbol |
|-----------|----------------|
| 1-32 | RS32 |
| 35-60 | RS63 |
| 70-100 | RS100 |
| 110-200 | RS200 |
| 225-400 | RS400 |

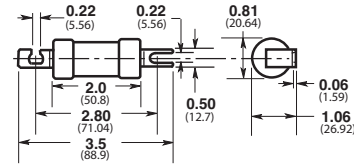
See Red Spot data sheet No. 10083 for details.



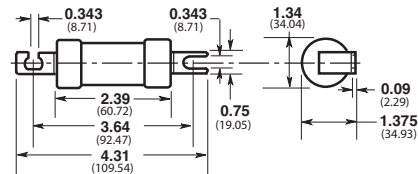
Dimensions - in (mm)



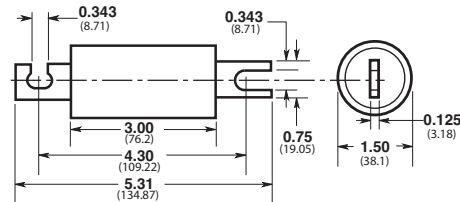
CGL 1-30



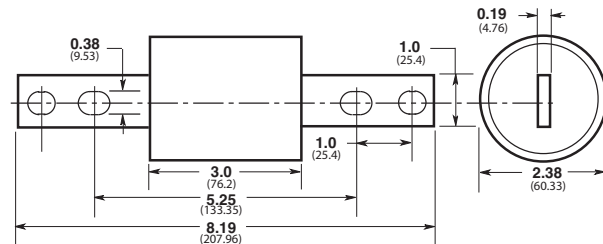
CGL 35-60



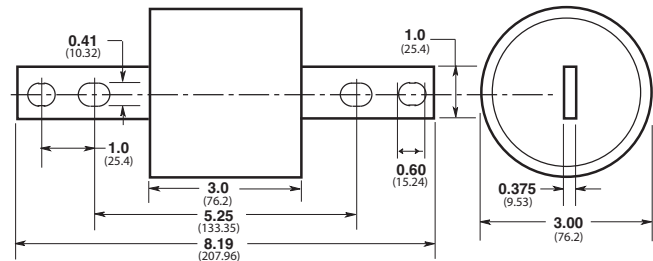
CGL 70-100



CGL 110-200



CGL 225-400



CGL 450-600