

## CDS, CDN and PON Type P and D

### Specifications

**Description:** CSA time-delay Type D and P fuses.

**Dimensions:** See catalog numbers table and dimensions illustration.

### Ratings:

Volts: — 250Vac (CDN and PON)  
— 600Vac (CDS)

Amps: — 10-600A

IR: — 10kA minimum

**Agency information:** CE, CSA Certified to C22.2 No. 59.1.

### Features and benefits

- Economical fuse in a variety of ratings for applications not requiring time-delay.

### Typical applications

- Lighting, heating and other circuits not subject to temporary surges and where available short-circuit current are relatively low.

### Basic catalog numbers

#### Time-Delay CSA Type "D" fuses

Catalog numbers	Volts	Amp ratings
CDN*	250Vac	10, 12, 15, 20, 25, 30, 35, 40, 45, 50, 60, 70, 80, 90, 100, 110, 125, 150, 175, 200, 225, 250, 300, 350, 400, 450, 500, 600
		10, 12, 15, 20, 25, 30, 35, 40, 45, 50, 60, 70, 80, 90, 100, 110, 125, 150, 175, 200, 225, 250, 300, 350, 400, 450, 500, 600
CDS**	600Vac	10, 12, 15, 20, 25, 30, 35, 40, 45, 50, 60, 70, 80, 90, 100, 110, 125, 150, 175, 200, 225, 250, 300, 350, 400, 450, 500, 600
		10, 12, 15, 20, 25, 30, 35, 40, 45, 50, 60, 70, 80, 90, 100, 110, 125, 150, 175, 200, 225, 250, 300, 350, 400, 450, 500, 600

\* Below 10 amps, use FRN-R.

\*\* Below 10 amps, use FRS-R.

#### One-time CSA Type "P" fuses

Catalog number	Volts	Amp ratings
PON	250Vac	15, 20, 25, 30, 35, 40, 45, 50, 60

### To Order

To order, specify basic catalog number and amp rating.

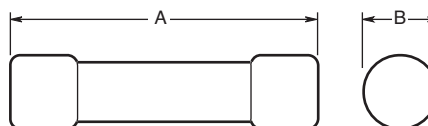
Example: CDN-30, CDS-110 or PON-40.

### Dimensions - in (mm)

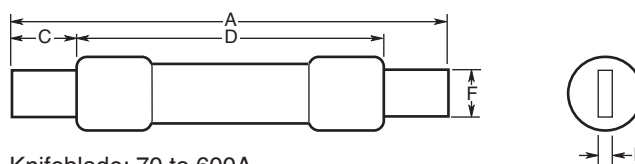
Catalog symbol and volts	Amp rating	A Overall	B Max Diameter	C Min Blade length	D Min Barrel length	E Blade thickness	F Blade width
CDN/PON 250Vac	1-30	2.0 (50.8)	0.56 (14.3)	—	—	—	—
	35-60	3.0 (76.2)	0.81 (20.6)	—	—	—	—
	70-100	5.88 (149.4)	—	1.0 (25.4)	—	0.13 (3.2)	0.75 (19.1)
	110-200	7.3 (185.4)	—	1.38 (34.9)	4.13 (104.8)	0.19 (4.8)	1.13 (28.6)
	225-400	8.63 (219.2)	—	1.88 (47.6)	4.63 (117.5)	0.25 (6.4)	1.63 (41.3)
	450-600	10.38 (263.7)	—	2.25 (57.2)	5.19 (131.8)	0.25 (6.4)	2 (50.8)
CDS 600Vac	1-30	5.0 (127.0)	0.81 (20.6)	—	—	—	—
	35-60	5.5 (139.7)	1.06 (27.0)	—	—	—	—
	70-100	7.88 (200.2)	—	1.0 (25.4)	—	0.13 (3.2)	0.75 (19.1)
	110-200	9.63 (244.6)	—	1.38 (34.9)	6.13 (115.6)	0.19 (4.8)	1.13 (28.6)
	225-400	11.63 (295.4)	—	1.88 (47.6)	7.13 (118.1)	0.25 (6.4)	1.63 (41.3)
	450-600	13.38 (339.9)	—	2.25 (57.2)	8.19 (208.0)	0.25 (6.4)	2 (50.8)



### Dimensions



Ferrule: 1 to 60A



Knifeblade: 70 to 600A

### Recommended fuse blocks

Fuse	1-pole		2-pole		3-pole	
	250V	600V	250V	600V	250V	600V
1-30A	HM25030-1	HM60030-1	HM25030-2	HM60030-2	HM25030-3	HM60030-3
35-60A	HM25060-1	HM60060-1	HM25060-2	HM60060-2	HM25060-3	HM60060-3
70-100	HM25100-1	HM60100-1	HM25100-2	HM60100-2	HM25100-3	HM60100-3
110-200	HM25200-1	HM60200-1	HM25200-2	HM60200-2	HM25200-3	HM60200-3
225-400	HM25400-1	HM60400-1	HM25400-2	HM60400-2	HM25400-3	HM60400-3
450-600	HM25600-1	HM60600-1	HM25600-2	HM60600-2	HM25600-3	HM60600-3

See data sheets 100289 (30-60A) and 3192 (70-600A) for terminal options.

### CGL Form II Class C

#### Specifications

**Description:** Current-limiting HRCII-C fuses designed to withstand inrush currents on typical motor start-ups while offering high current limitation in the short-circuit region.

**Dimensions:** See dimensions illustrations.

#### Ratings:

Volts: — 600Vac  
250Vdc (1-30A)

Amps: — 1-600A

IR: — 200kA  
40kA DC

**Agency information:** CE, CSA Certified, C22.2 No. 106, Class 1422, File 53787.

#### Features and benefits

- Close sizing to loads allows using smaller and less costly switches
- Provides a higher degree of short-circuit protection
- Helps protect motors against burnout from overloads

#### Typical applications

- For use in circuits subject to surge currents such as those caused by motors, transformers and other inductive loads

#### Catalog numbers (-amps)

CGL-1	CGL-40	CGL-175
CGL-2	CGL-45	CGL-200
CGL-3	CGL-50	CGL-225
CGL-4	CGL-60	CGL-250
CGL-6	CGL-70	CGL-300
CGL-10	CGL-80	CGL-350
CGL-15	CGL-90	CGL-400
CGL-20	CGL-100	CGL-450
CGL-25	CGL-110	CGL-500
CGL-30	CGL-125	CGL-600
CGL-35	CGL-150	

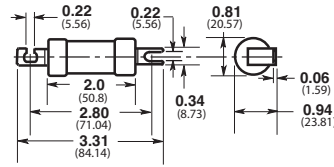
#### Available Red Spot fuse holders

Fuse amps	Catalog symbol
1-32	RS32
35-60	RS63
70-100	RS100
110-200	RS200
225-400	RS400

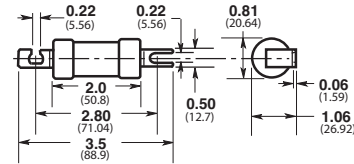
See Red Spot data sheet No. 10083 for details.



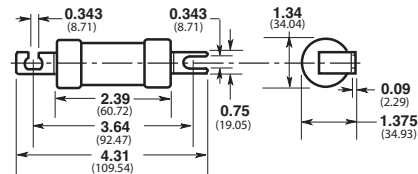
#### Dimensions - in (mm)



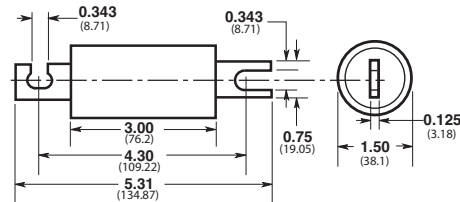
CGL 1-30



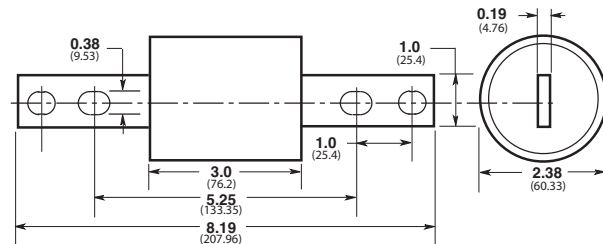
CGL 35-60



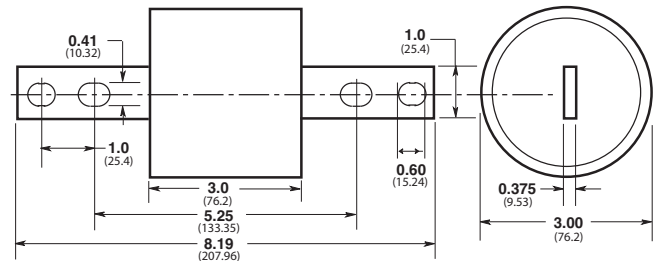
CGL 70-100



CGL 110-200



CGL 225-400



CGL 450-600