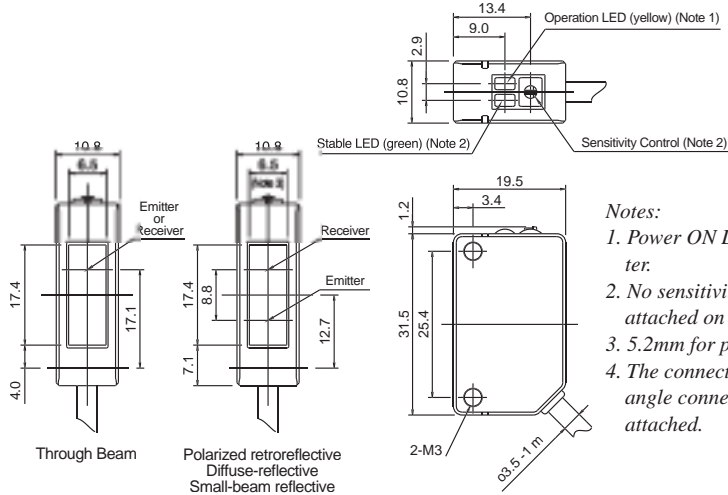


## Dimensions

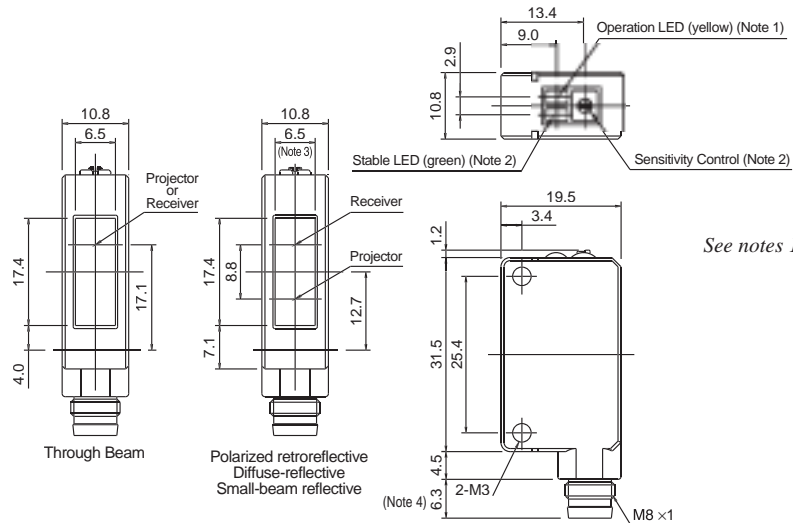
### Cable Type



**Notes:**

1. Power ON LED (green) for through-beam emitter.
2. No sensitivity control and stable LED are attached on the through-beam emitter.
3. 5.2mm for polarized retroreflective type.
4. The connector length is 18mm when a right-angle connector cable (SA9Z-CM8K-4L) is attached.

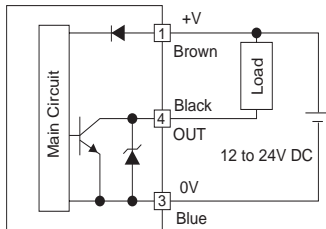
### Connector Type



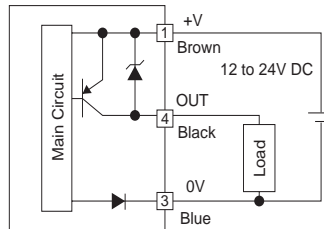
See notes 1 through 4 above.

### Output Circuit and Wiring Diagram

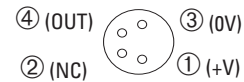
• NPN Output



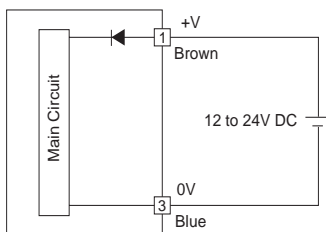
• PNP Output



**Connector Pin Assignment**



• Through-beam Type Emitter



**Connector Pin Assignment**

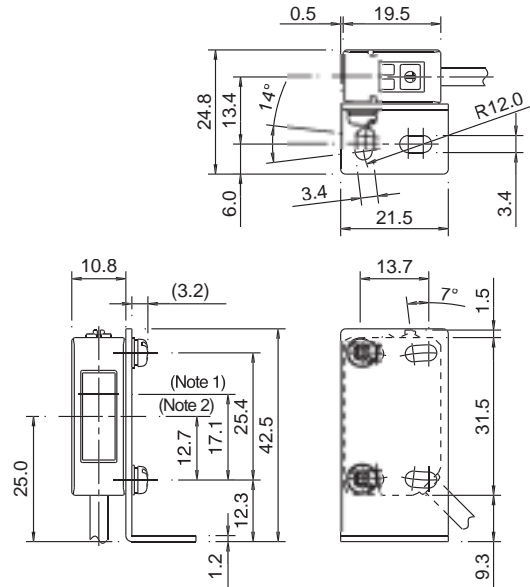
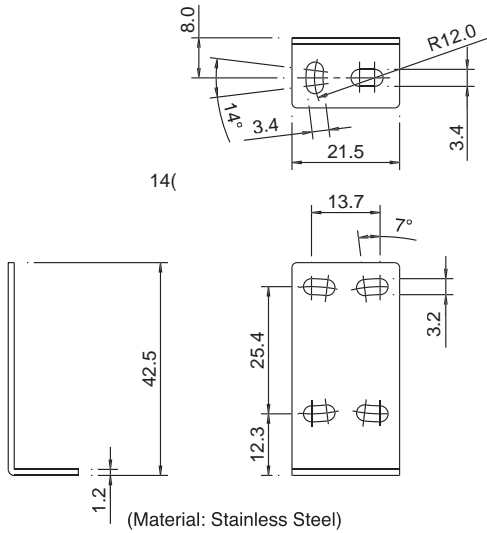


**Dimensions, continued**

**Mounting Bracket**

**SA9Z-K01**

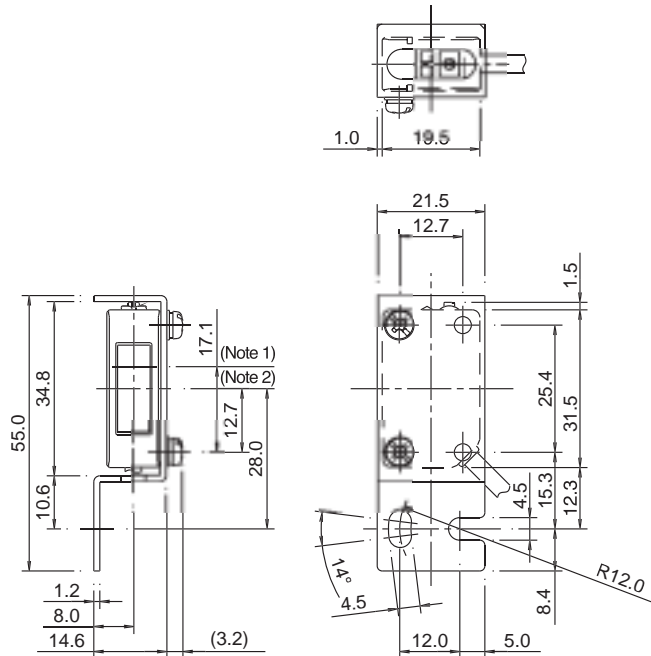
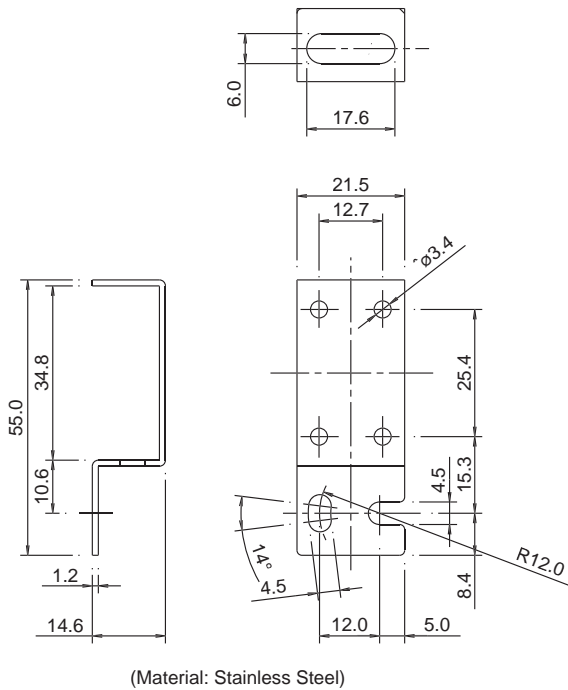
**With Mounting Bracket**



Note 1: Center of optical axis (through-beam type)  
 Note 2: Center of optical axis (polarized retroreflective, diffuse reflective, and small-beam reflective type)

**SA9Z-K02**

**With Mounting Bracket**



Note 1: Center of optical axis (through-beam type)  
 Note 2: Center of optical axis (polarized retroreflective, diffuse reflective, and small-beam reflective type)