



# EPM-1520 EPM-1530

# 18/24-bit LVDS Transmitter Module 18/24-bit LVDS Receiver Module

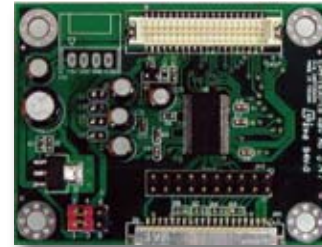
## EPM-1520



### Features

- Supports 20 to 85 MHz shift clock
- Up to 2.38 Gbps throughput
- Up to 297.5 Mbytes/sec bandwidth
- 345 mV (typ) swing LVDS devices for low EMI
- Compatible with TIA/EIA-644 LVDS standard
- Flat Panel/CRT interface:
  - NS DS90C385 or equivalent transmitter chipset (EPM-1520-24)
  - NS DS90C365 or equivalent transmitter chipset (EPM-1520-18)
  - Supports VGA, SVGA, XGA and single/dual pixel SXVGA display type
- 40-pin DFB-40DP-1.25V (Input)
- Operating temperature: 32 to 140°F (0 to 60°C)
- Size (L x W): 2.6" x 2.0" (65 mm x 50 mm)

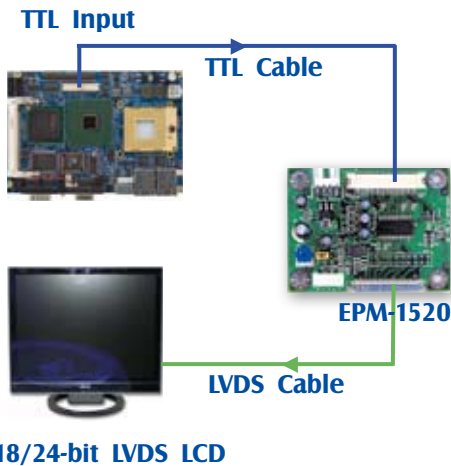
## EPM-1530



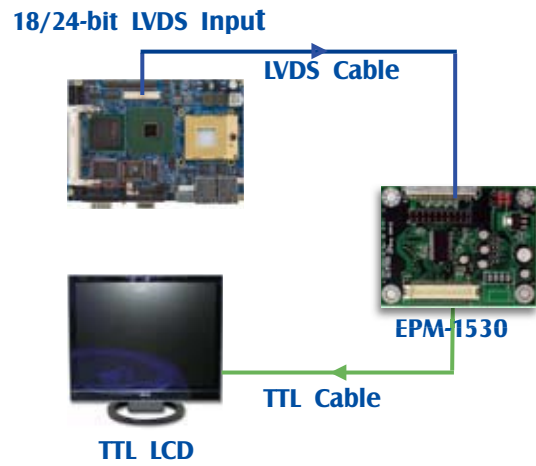
### Features

- Supports 20 to 85 MHz shift clock
- Up to 2.38 Gbps throughput
- Up to 297.5 Mbytes/sec bandwidth
- 345 mV (typ) swing LVDS devices for low EMI
- Compatible with TIA/EIA-644 LVDS standard
- Flat Panel/CRT interface:
  - NS DS90C384 or equivalent receiver chipset (EPM-1530-24)
  - NS DS90C364 or equivalent receiver chipset (EPM-1530-18)
  - Supports VGA, SVGA, XGA and single/dual pixel SXVGA display type
- 20-pin HIROSE DF14A-20P-1.25H Connector (Input)
- Operating temperature: 32 to 140°F (0 to 60°C)
- Size (L x W): 2.6" x 2.0" (65 mm x 50 mm)

### Diagram



### Diagram



### Supported Boards

- Avalue boards with 18/24-bit TTL port

### Ordering Information

- **EPM-1520-18**  
18-bit LVDS Transmitter Module
- **EPM-1520-24**  
18/24-bit LVDS Transmitter Module

### Supported Boards

- Avalue boards with 18/24-bit LVDS port

### Ordering Information

- **EPM-1530-18**  
18-bit LVDS Receiver Module
- **EPM-1530-24**  
18/24-bit LVDS Receiver Module