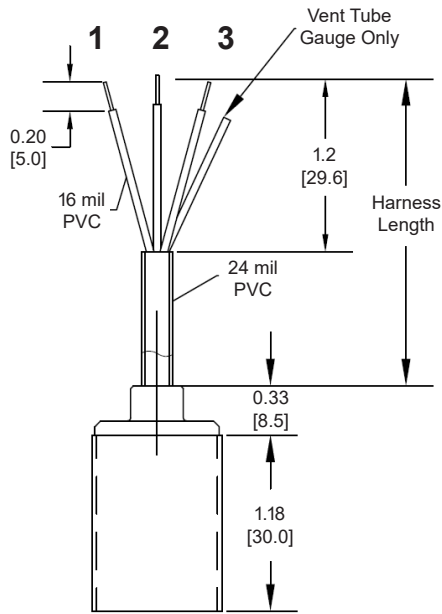
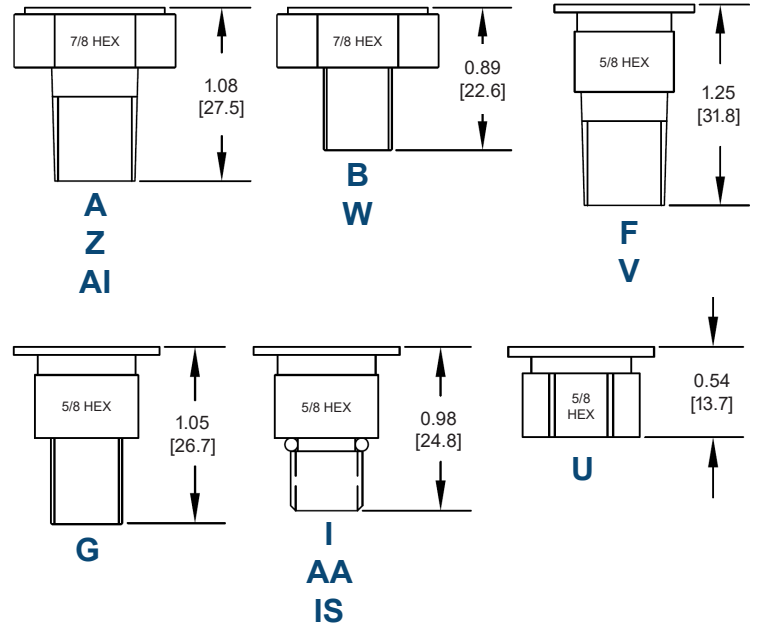


# Dimensional Drawings

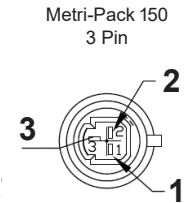
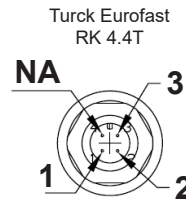
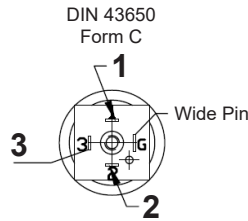
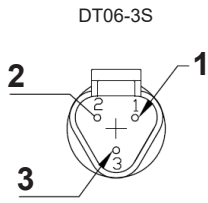
## Harness



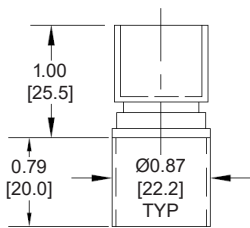
## Ports



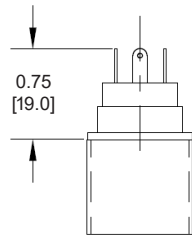
## Connectors



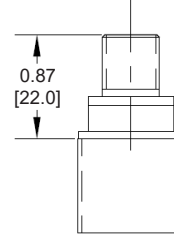
## Deutsch



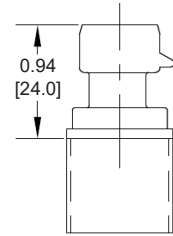
## DIN 43650



## M12



## Packard



Pin	Color	1-5 V	0.5-4.5 V	20 mA
1	Red	$V_{in}$ (8-30)	$V_{in}$ (5+/-0.1)	$V_{in}$ (8-30)
2	Black	GND	GND	NA
3	White	$V_{out}$	$V_{out}$	GND
	Tube	Gauge	Gauge	Gauge

Measurement Units		
0.00	=	Inches
[00.0]	=	Millimeters

# P51 MediaSensor™ Ordering System

**P51 - 50 - A - A - I6 - 4.5 V - 000 - 000**

**Family** —————

**Full Scale** —————  
Pressure (15 - 7,500 PSI)

**Pressure Type** —————  
**A** = Absolute (15 - 7,500 PSI)  
**G** = Gauge (25 - 300 PSI)  
**S** = Sealed Gauge (15 - 7,500 PSI)

**Port Configuration** —————

<b>304L</b>	<b>316L</b>	<b>Hex</b>	<b>Port</b>
A, AI	Z	7/8"	1/4 NPT
B	W	7/8"	1/8 NPT
F, V		5/8"	1/4 NPT
G		5/8"	1/8 NPT
I	AA	5/8"	7/16 - 20
U		5/8"	7/16 - 20 (Female)
IS		5/8"	7/16 - 20 (Snubber)

**Connector / Harness** —————

**D** = Deutsch

**P** = Packard

**MD** = DIN 43650 micro-mini connector with 90° mating connector

**M12** = 4 pin micro connector

**24 Gauge Harness** (Inner PVC: 16 mil)

- **I6** = 6"
- **I12** = 12"
- **I18** = 18"
- **I24** = 24"
- **I36** = 36"
- **I72** = 72"

**18 Gauge Harness** (Inner PVC: 9 mil)

- **X6** = 6"
- **X12** = 12"
- **X18** = 18"

**Output Options** —————

**4.5 V** = 0.5 - 4.5 V (5 V input only)

**4.5 OVP** = 0.5 - 4.5 V (5 V input only) Includes over voltage protection

**5 V** = 1 - 5 V (8 to 30 V input only)

**20 mA** = 4 - 20 mA (8 to 30 V input only)

**MOV** = Option for 5 V and 20 mA for voltage spike protection

Placeholder

\*Other port configurations may be available. Consult factory. MOQ's apply.

\*Other harness lengths available - contact factory. MOQ's will apply.

**Harness Information**

- Stranded Copper: Tinned
- Outer Jacket PVC: 24 mil
- Vent Tube: 1.57 mil Diameter (Gauge Only)